



Evans, Mechwart, Hambleton & Tilton, Inc.
 Engineers • Surveyors • Planners • Scientists
 5500 New Albany Road, Columbus, OH 43054
 Phone: 614.775.4500 Toll free: 888.775.3648
 emht.com

SURVEY OF ACREAGE PARCEL

SECTION 1, TOWNSHIP 10, RANGE 21

BUCKINGHAM'S SURVEY OF CONGRESS LANDS

TOWNSHIP OF MADISON AND CITY OF CANAL WINCHESTER,
 COUNTY OF FRANKLIN, STATE OF OHIO

Date: October 14, 2013

Job No. 2012-1969

Scale: 1" = 100'

BASIS OF BEARINGS:

The bearings shown on this plat are based on the Ohio State Plane Coordinate System, South Zone, NAD83 (CORS96). Said bearings originated from a field traverse which was tied (referenced) to said coordinate system by GPS observations and observations of selected CORS base stations in the National Spatial Reference System. The portion of the centerline of Gender Road, having a bearing of North 4 degrees 29 minutes 47 seconds East is designated the "basis of bearing" for this survey.

RECEIVED

OCT 23 2013

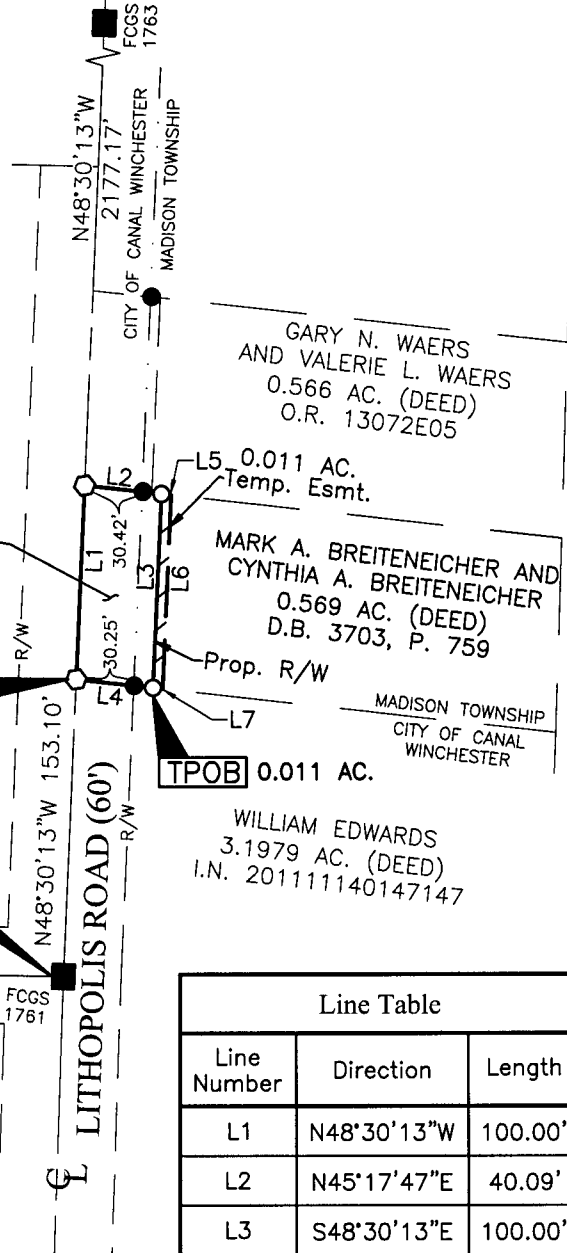
Franklin County Engineer
 Dean C. Ringle, P.E., P.S.

0.092 Ac. Gross
 -0.092 Ac. PRO
 0.000 Ac. Net

0.092 AC. TPOB

RPOB

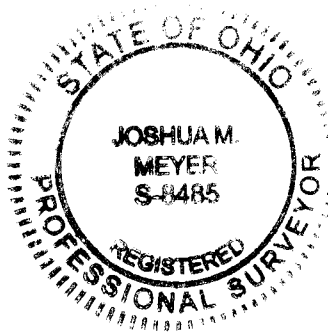
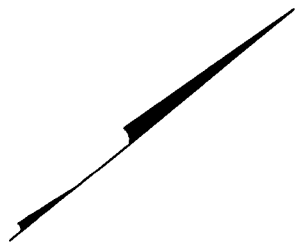
OREGON ROAD (50')



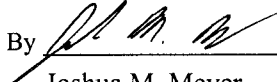
Line Table		
Line Number	Direction	Length
L1	N48°30'13"W	100.00'
L2	N45°17'47"E	40.09'
L3	S48°30'13"E	100.00'
L4	S45°17'47"W	40.09'
L5	N45°17'47"E	5.01'
L6	S48°30'13"E	100.00'
L7	S45°17'47"W	5.01'

SURVEY NOTE:

This survey was prepared using documents of record, prior plats of survey, and observed evidence located by an actual field survey.



- = MON. FND.
- = 5/8" I.P. FND.
- = I.P. SET
- = MAG. NAIL FND.
- = MAG. NAIL SET

By 
 Joshua M. Meyer
 Professional Surveyor No. 8485

10-22-2013

Date

I.P. Set are 13/16" I.D. iron pipe with cap inscribed EMHT INC



GRAPHIC SCALE (in feet)

J:\20121969\DWG\04SHEETS\BOUNDARY\20121969-YS-BNDY-09.DWG plotted by GEIGER, STEVEN on 10/22/2013 9:23:48 AM last saved by SGEIGER on 10/22/2013 9:23:44 AM