



Evans, Mechwart, Hambleton & Tillon, Inc.  
 Engineers • Surveyors • Planners • Scientists  
 5500 New Albany Road, Columbus, OH 43054  
 Phone: 614.775.4500 Toll Free: 888.775.3648  
 emht.com

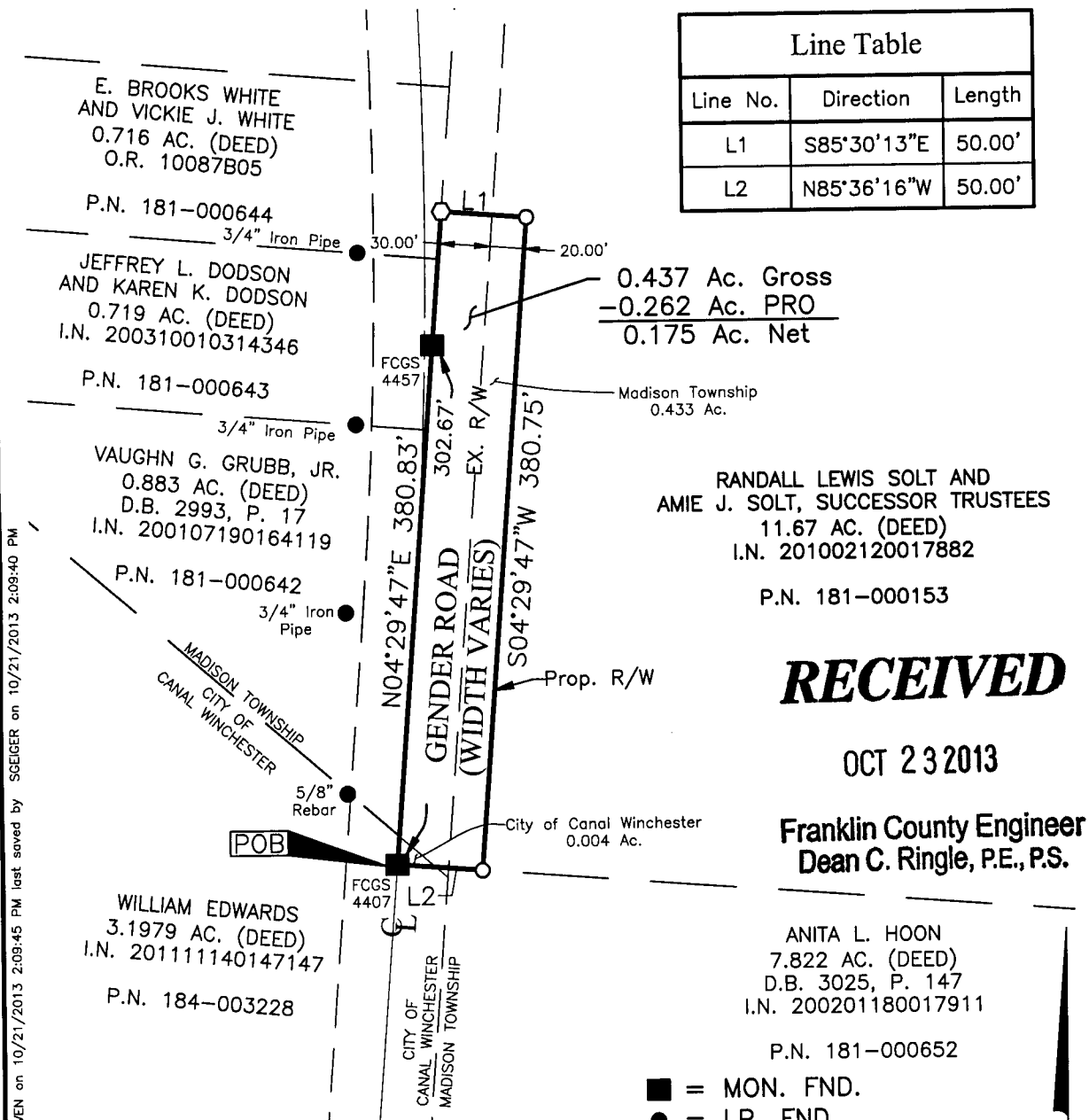
**SURVEY OF ACREAGE PARCEL**  
**SECTION 1, TOWNSHIP 10, RANGE 21**  
**BUCKINGHAM'S SURVEY OF CONGRESS LANDS**  
**CITY OF CANAL WINCHESTER AND TOWNSHIP OF MADISON,**  
**COUNTY OF FRANKLIN, STATE OF OHIO**

Date: October 14, 2013

Job No. 2012-1969

Scale: 1" = 100'

Line Table		
Line No.	Direction	Length
L1	S85°30'13"E	50.00'
L2	N85°36'16"W	50.00'



**RECEIVED**

OCT 23 2013

Franklin County Engineer  
 Dean C. Ringle, P.E., P.S.

J:\20121969\DWG\04SHEETS\BOUNDARY\20121969-VS-BNDY-07.DWG plotted by GEIGER, STEVEN on 10/21/2013 2:09:45 PM last saved by SGEIGER on 10/21/2013 2:09:40 PM Xrefs:

**SURVEY NOTE:**

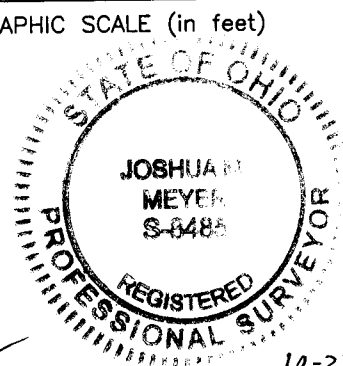
This survey was prepared using documents of record, prior plats of survey, and observed evidence located by an actual field survey.

- = MON. FND.
  - = I.P. FND.
  - = I.P. SET
  - = MAG. NAIL SET
- I.P. Set are 13/16" I.D. iron pipe with cap inscribed EMHT INC



**BASIS OF BEARINGS:**

The bearings shown on this plat are based on the Ohio State Plane Coordinate System, South Zone, NAD83 (CORS96). Said bearings originated from a field traverse which was tied (referenced) to said coordinate system by GPS observations and observations of selected CORS base stations in the National Spatial Reference System. The portion of the centerline of Gender Road, having a bearing of North 4 degrees 29 minutes 47 seconds East as shown hereon, is designated the "basis of bearing" for this survey.



By Joshua M. Meyer  
 Professional Surveyor No. 8485

10-22-2013  
 Date