



Evans, Mechwart, Hambleton & Tilton, Inc.
 Engineers • Surveyors • Planners • Scientists
 5500 New Albany Road, Columbus, OH 43054
 Phone: 614.775.4500 Toll Free: 888.775.3648
 emht.com

SURVEY OF ACREAGE PARCEL

QUARTER TOWNSHIP 3, TOWNSHIP 2, RANGE 16

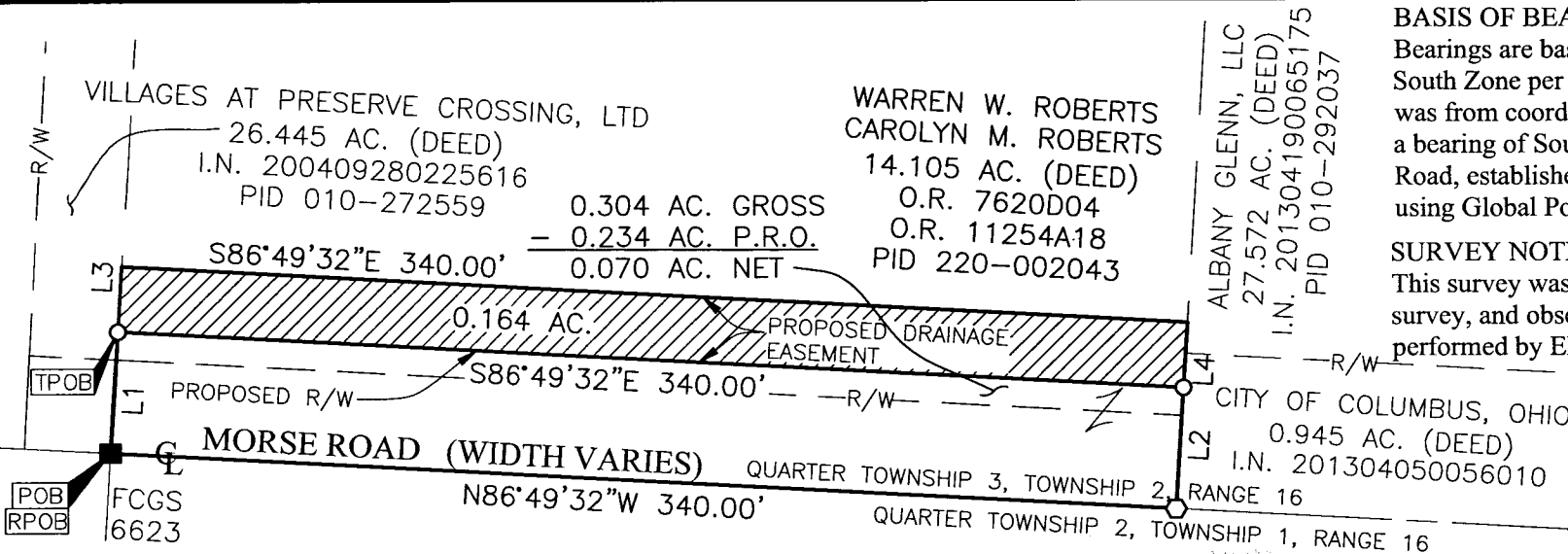
UNITED STATES MILITARY LANDS

TOWNSHIP OF PLAIN, COUNTY OF FRANKLIN, STATE OF OHIO

Date: September 24, 2013

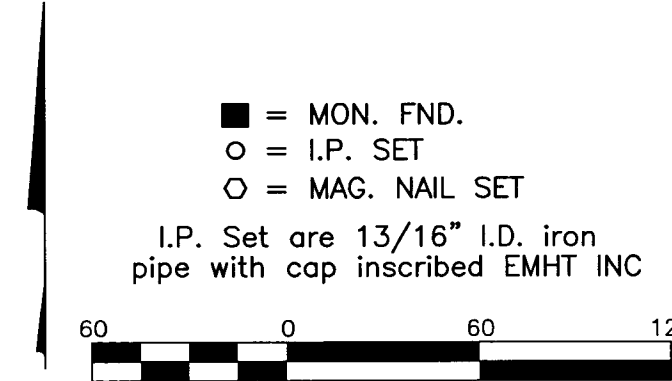
Scale: 1" = 60'

Job No. 2013-0406

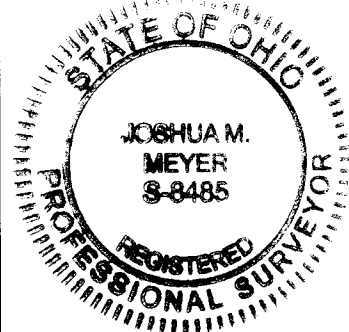


BASIS OF BEARINGS:
 Bearings are based on the Ohio State Plane Coordinate System, South Zone per NAD 83 (1986 adjustment). Control for bearings was from coordinates of monuments FCGS 6666 and 6667, having a bearing of South 86° 56' 02" East for the centerline of Thompson Road, established by the Franklin County Engineering Department using Global Positioning System procedures and equipment.

SURVEY NOTE:
 This survey was prepared using documents of record, prior plats of survey, and observed evidence located by an actual field survey performed by EMH&T, Inc., in June and September of 2013.



Line Table		
Line Number	Direction	Length
L1	N03°36'41"E	39.00'
L2	S03°36'39"W	39.00'
L3	N03°36'41"E	21.00'
L4	S03°36'39"W	21.00'



RECEIVED

SEP 20 2013

Franklin County Engineer
 Dean C. Ringle, P.E., P.S.

By *Josh M. Meyer*
 Joshua M. Meyer

9-24-2013

Date