

LEGEND

- IPF Iron Pipe Found
RRSF Railroad Spike Found
RRSS Railroad Spike Set
PKNF PK Nail Found
RBF Rebar Found
CCSS Custom Gilt Spade Set
MON Monument Box Found
CMF Concrete Right-of-way Monument Found
Stone Stone Found
PKNS PK Nail Set
Sign
Mailbox
Water Valve
Water Tap
Water Meter
Water Meter Pit
Fire Hydrant
Downspout
Test Bore
Benchmark
Railroad Stop Block
Monitor Well
Handicap Parking Space
Storm Sewer Line
Sanitary Sewer Line
Gas Line
Water Line
Underground Telephone Line
Underground Electric Line
Overhead Utility Line
Fence

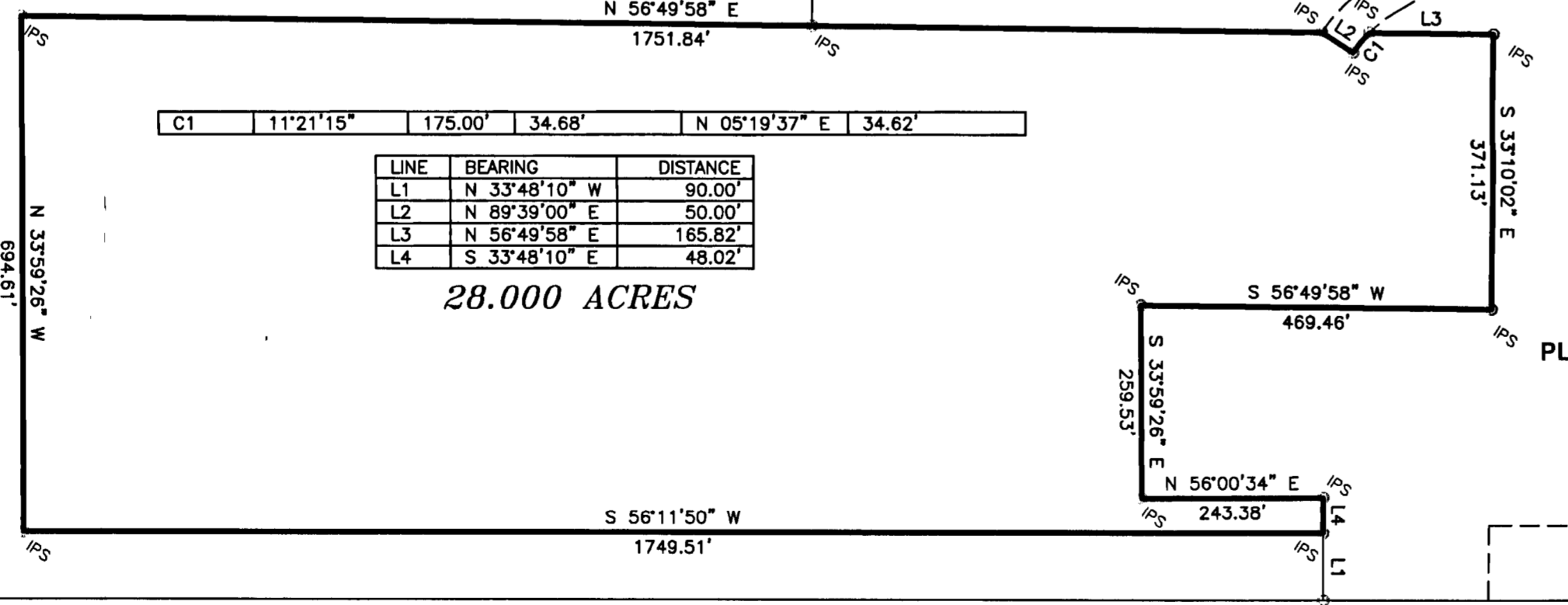
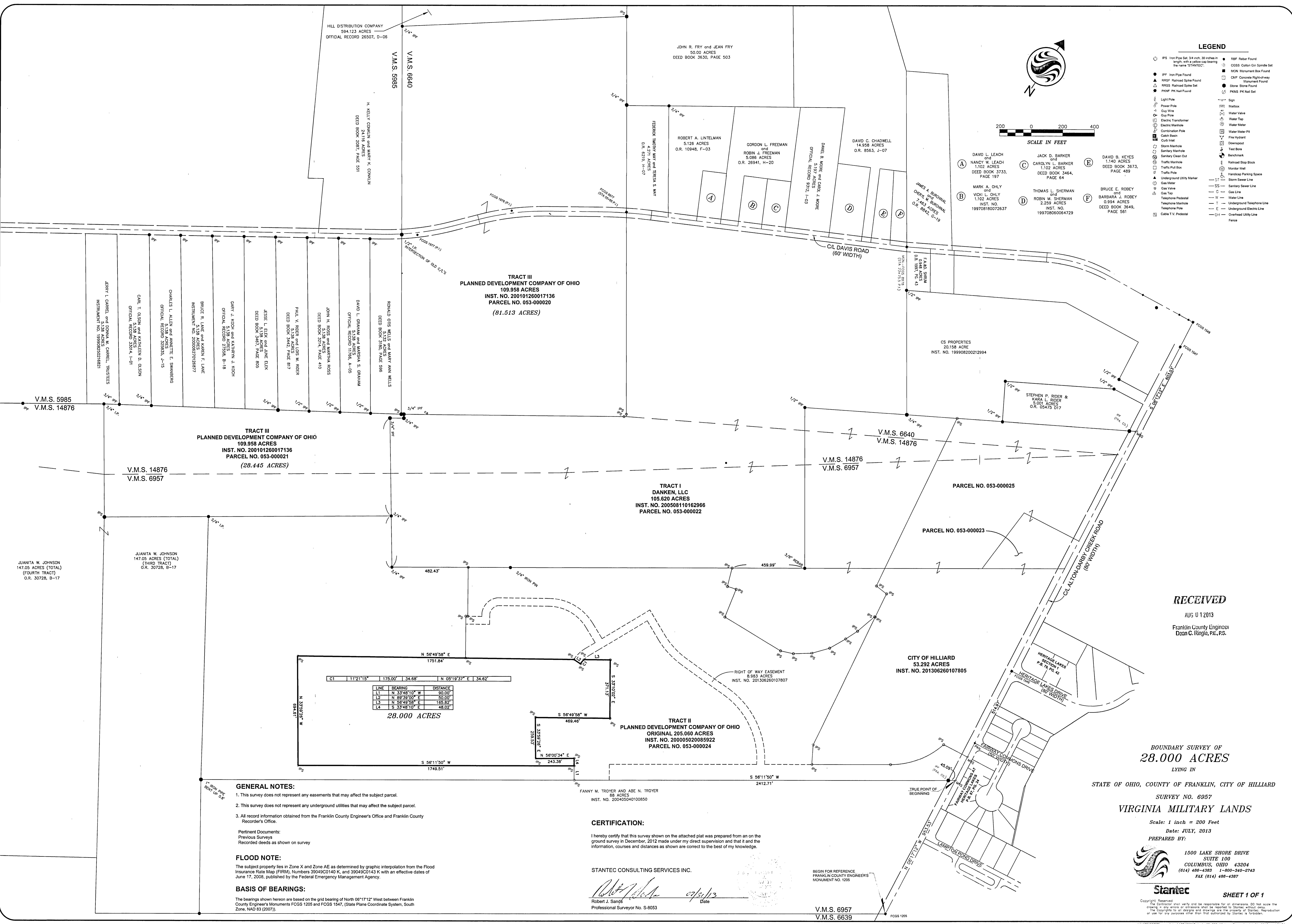
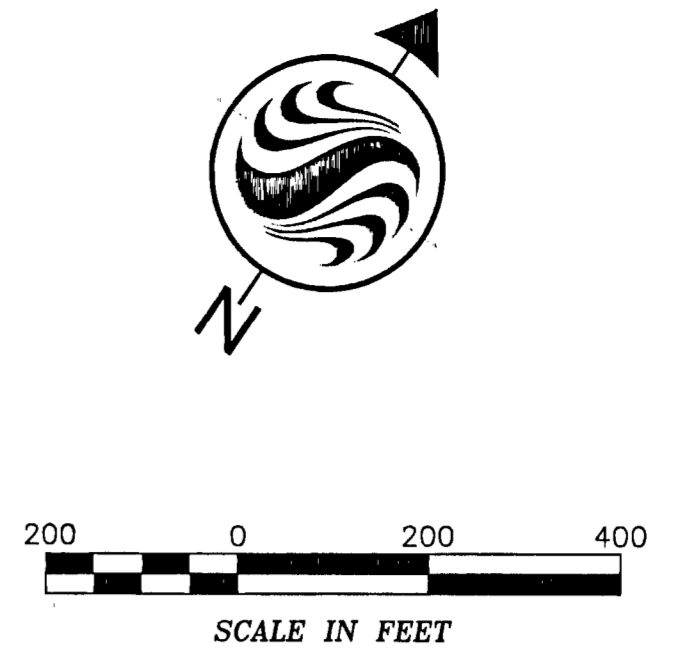


Table with 3 columns: LINE, BEARING, DISTANCE. Contains 4 rows of boundary data for the 28.000-acre parcel.

GENERAL NOTES:
1. This survey does not represent any easements that may affect the subject parcel.
2. This survey does not represent any underground utilities that may affect the subject parcel.
3. All record information obtained from the Franklin County Engineer's Office and Franklin County Recorder's Office.

FLOOD NOTE:
The subject property lies in Zone X and Zone AE as determined by graphic interpolation from the Flood Insurance Rate Map (FIRM), Numbers 39049C0140 K, and 39049C0143 K with an effective dates of June 17, 2008, published by the Federal Emergency Management Agency.

BASIS OF BEARINGS:
The bearings shown hereon are based on the grid bearing of North 06°17'12" West between Franklin County Engineer's Monuments FCGS 1205 and FCGS 1547, (State Plane Coordinate System, South Zone, NAD 83 (2011)).

CERTIFICATION:
I hereby certify that this survey shown on the attached plat was prepared from an on the ground survey in December, 2012 made under my direct supervision and that it and the information, courses and distances as shown are correct to the best of my knowledge.

STANTEC CONSULTING SERVICES INC.
Robert J. Sanda
Professional Surveyor No. S-8053
Date: 07/31/13

BEGIN FOR REFERENCE
FRANKLIN COUNTY ENGINEER'S
MONUMENT NO. 1205
V.M.S. 6957
V.M.S. 6639

RECEIVED
AUG 01 2013
Franklin County Engineer
Dean C. Ringle, P.E., P.S.

BOUNDARY SURVEY OF
28.000 ACRES
LYING IN

STATE OF OHIO, COUNTY OF FRANKLIN, CITY OF HILLIARD

SURVEY NO. 6957
VIRGINIA MILITARY LANDS

Scale: 1 inch = 200 Feet
Date: JULY, 2013
PREPARED BY:

1500 LAKE SHORE DRIVE
SUITE 100
COLUMBUS, OHIO 43204
(614) 486-4383 1-800-340-2743
FAX (614) 486-4387



SHEET 1 OF 1

Copyright Reserved
The Contractor shall verify and be responsible for all dimensions. DO NOT scale the drawing. Any errors or omissions shall be reported to Stantec without delay. The Contractor is at all times and during the life of the contract, shall be responsible for the accuracy of the information and drawings. Reproduction or use for any purposes other than that authorized by Stantec is forbidden.