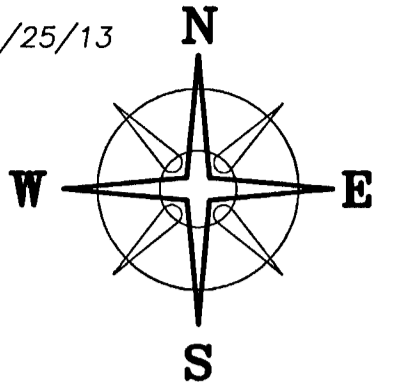


RECEIVED

JUL 19 2013

Franklin County Engineer
Dean C. Ringle, P.E., P.S.

BEARINGS ARE BASED ON A GPS OBSERVATION ON 6/25/13
WGS 1984 GEODETIC NORTH
OLMSTEAD ROAD (N 18°38'48" W)

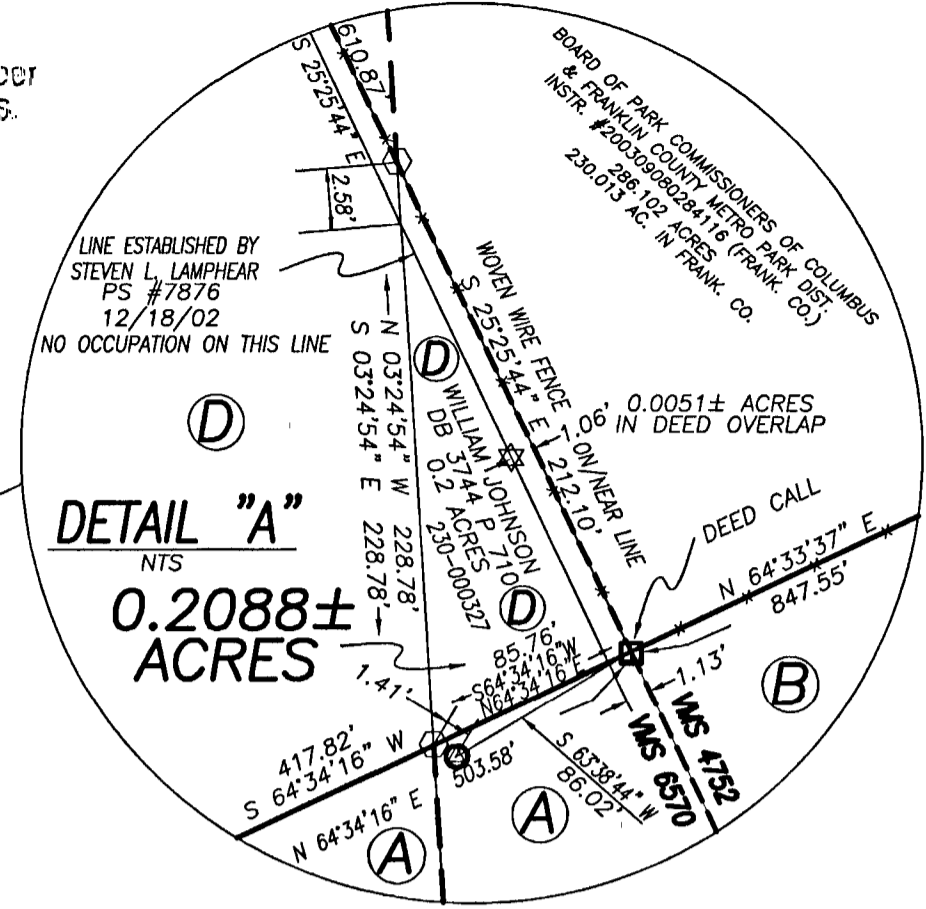


BOARD OF PARK COMMISSIONERS OF COLUMBUS
& FRANKLIN COUNTY METRO PARK DIST.
OR 171 P 1588
MADISON CO.
286.102 ACRES
56.089 AC. IN MAD. CO.

PATRICIA STONER
OR 234 P 213
40.952 ACRES
PLAT 25-95

BOARD OF PARK COMMISSIONERS OF COLUMBUS
& FRANKLIN COUNTY METRO PARK DIST.
INSTR. #200309080284116 (FRANK. CO.)
286.102 ACRES
230.013 AC. IN FRANK. CO.

WILLIAM JOHNSON
DB 3744 P 710
0.2 ACRES
230-000327 "A"
SEE DETAIL



NOTES

0.2088± ACRES

THIS 0.2 ACRE TRACT IS CONVEYED TO PATRICIA STONER BY OFFICIAL RECORD 234 PAGE 213 IN MADISON COUNTY AND INSTR. #201109090114559 IN FRANKLIN COUNTY THE SAID 0.2 ACRE TRACT WAS LOCATED IN FRANKLIN COUNTY BY A COUNTY LINE SURVEY FILED ON SEPT. 16, 1899 IN SURVEY PLAT BOOK 3 P. 82, FRANKLIN COUNTY ENGINEER'S OFFICE, AND CALL AS BEING OWNED BY M. & A. BARRETT. NO CHAIN OF OWNERSHIP WAS CREATED FOR THE STONER FAMILY IN FRANKLIN COUNTY AND THE 0.2 ACRE TRACT WAS SOLD AT SHERIFF SALE PRIOR TO 4/11/1920 TO SF SMITH, 7/2/1946 TO THOMAS S JOHNSON, AND 8/13/1979 TO WILLIAM JOHNSON FOR BACK TAXES AND IS RECORDED TO WILLIAM JOHNSON BY DEED BOOK 3744 PAGE 710.

THE DEED OVERLAP WAS CREATED IN 12/18/02 BY STEVEN L LAMPHEAR P.S. #7876 IT APPEARS HE USED 85' FROM A 1" IRON PIN, AS SHOWN IN DETAIL "A", REFERENCED IS MADE ON THE SURVEY OF SEPT. 16, 1899 PLAT OF LINE BETWEEN MADISON & FRANKLIN COUNTIES (SURVEY PLAT BOOK 3 P 82, FRANKLIN COUNTY ENGINEER'S OFFICE). I USED THE 3" "I" BEAM FENCE POST AS CALL FOR IN DEED AND USED BY OTHER SURVEYORS (SEE PRIVATE SURVEY PLATS ON FILE IN THE FRANKLIN COUNTY ENGINEER'S OFFICE).

DEED REFERENCE

PATRICIA STONER OR 234 P 213 MADISON CO.

INSTR. #201109090114559
FRANKLIN CO.

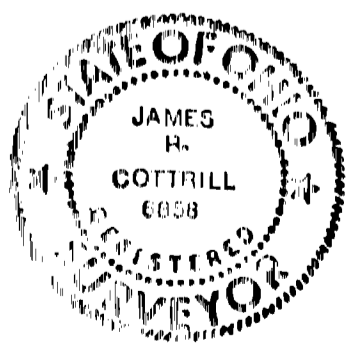
- (A) 4.05 ACRES PARCEL ONE
1 AC FRANK.
3 AC IN MAD.
- (B) 55.70 ACRES PARCEL TWO
52.84 AC FRANK.
2.86 AC IN MAD.
- (C) 10 ACRES PARCEL THREE
6.6 AC FRANK.
3.4 AC IN MAD.
- (D) 64.85 ACRES PARCEL FOUR
0.20 AC FRANK.
64.65 AC IN MAD.

LEGEND

- ① 1" SOLID IRON PIN (FOUND)
 - IRON PIPE (FOUND)
 - ⊕ 3/4" IRON TEE BAR & CAP (FOUND)
 - 1" SOLID SQUARE IRON BAR (FOUND)
 - 3" I BEAM POST (FOUND) CONC. MONUMENT IN FRANKLIN COUNTY GEOLOGICAL SURVEY MONUMENT (FOUND) DESCRIPTION & # ON PLAT NEXT TO MONUMENT SEE FRANKLIN COUNTY SURVEY CONTROL DATA BASE
 - ▲ AL. DISK IN TOP OF CONCRETE MONUMENT MONUMENT BOX ASSEMBLY SEE FRANKLIN COUNTY ENGINEERS DRAWING # 0011-02
 - MAGNAIL (SET) OVER IRON PIN (FOUND)
 - ▲ RAILROAD SPIKE (FOUND)
 - MAGNAIL (SET)
 - ☆ 3/4" I.D. IRON PIPE & YELLOW PLASTIC CAP STAMPED "CEC INC." (FOUND)
 - 5/8" Ø REBAR & YELLOW PLASTIC CAP STAMPED "COTTRILL 6858" (SET)
 - WOVEN WIRE FENCE ON/NEAR LINE
- ALL MONUMENTS FOUND OR SET ARE IN GOOD CONDITION UNLESS OTHERWISE NOTED.

OTHER INFORMATIONAL DOCUMENTS

MADISON CO.
MADISON COUNTY GIS
PLATS: 96-03, 23b, 41-94, 25-95
FRANKLIN CO.
PLATS: 2201, 11287, 13012, 16571, 20341, 20342, 40074, 40296, 40297, 40332, PB 3 P 82,
FRANKLIN CO. AUDITOR'S ASSESSMENT LIST 230-327
DEEDS: DB 1325 P 153, DB 2066 P 647, DB 2158 P 217, DB 2158 P 220, DB 3744 P 710, IN.#201109090114559, OR 3952 A16, OR 15200 D16
FRANKLIN CO. SURVEY CONTROL DATABASE



I HEREBY CERTIFY THAT THIS PLAT DEPICTS AN ACTUAL FIELD SURVEY PERFORMED BY JAMES R. COTTRILL P.S. #6858
DATE: 7/18/13

COTTRILL SURVEYING, L.L.C.

8256 S.R. 207 N.E. MT. STERLING, OHIO 43143 PH. (740) 869-3811

FARM SPLIT, VMS 6305, 6570 & 7541/7637,
FAIRFIELD TOWNSHIP/MADISON COUNTY,
PLEASANT TOWNSHIP/FRANKLIN COUNTY, OHIO.
SURVEYED FOR PATRICIA STONER

DATE DRAWN: 7/11/13	SCALE: 1" = 300' 300' 150' 0 300'	CREW: MW
JOB # S130614		DWN. BY: RC
F. B. #		CK. BY:

