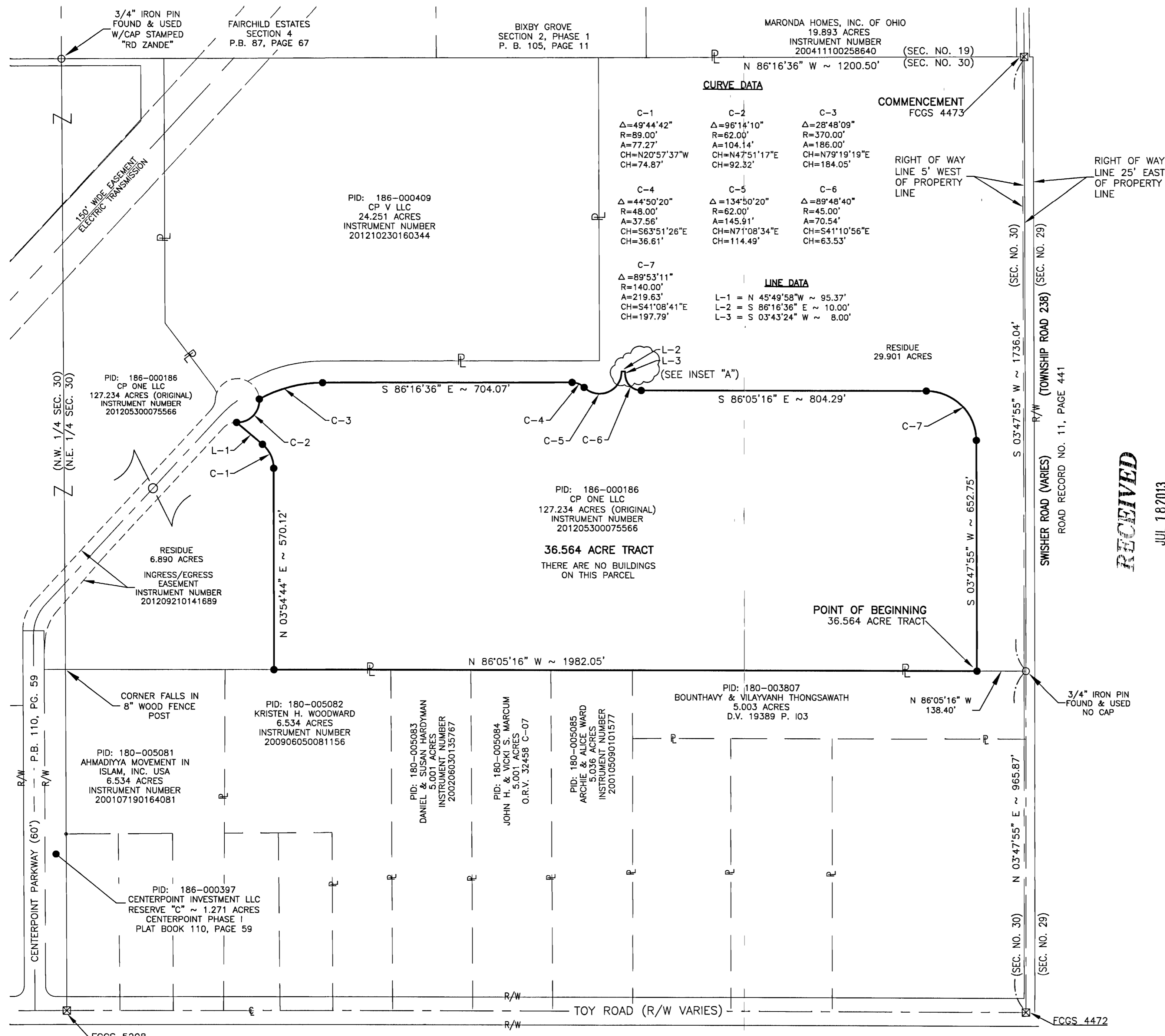


SITUATED IN THE STATE OF OHIO, COUNTY OF FRANKLIN, VILLAGE OF OBETZ,
BEING PART OF THE NORTHEASTERLY QUARTER OF SECTION 30, TOWNSHIP 11,
RANGE 21, CONGRESS LANDS EAST OF THE SCIOTO RIVER

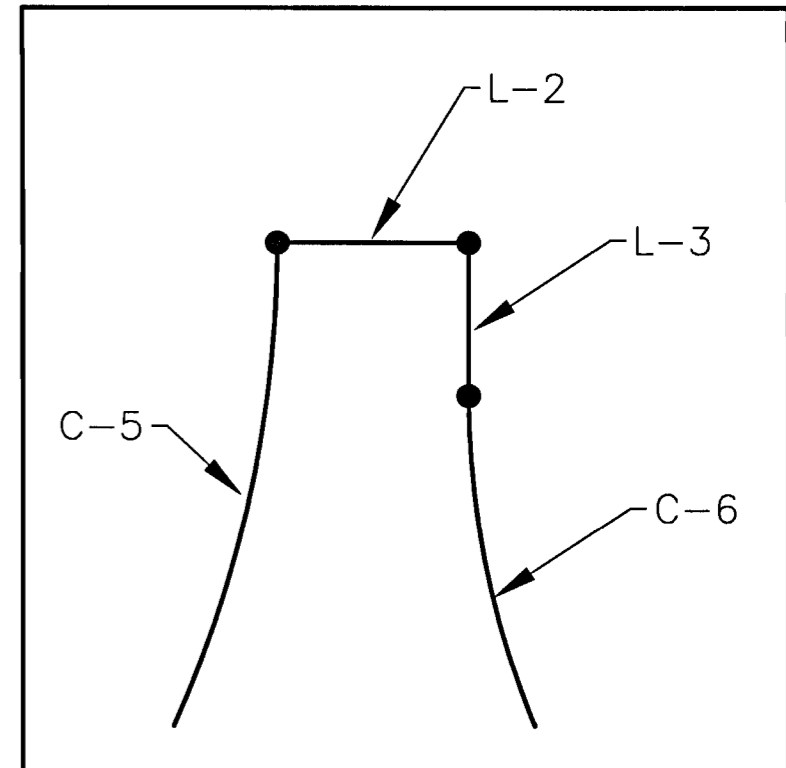


CURVE DATA

C-1 Δ=49°44'42" R=89.00' A=77.27' CH=N20°57'37"W CH=74.87'	C-2 Δ=96°14'10" R=62.00' A=104.14' CH=N47°51'17"E CH=92.32'	C-3 Δ=28°48'09" R=370.00' A=186.00' CH=N79°19'19"E CH=184.05'
C-4 Δ=44°50'20" R=48.00' A=37.56' CH=N20°57'26"E CH=36.61'	C-5 Δ=134°50'20" R=62.00' A=145.91' CH=N71°08'34"E CH=114.49'	C-6 Δ=89°48'40" R=45.00' A=70.54' CH=N41°10'56"E CH=63.53'
C-7 Δ=89°53'11" R=140.00' A=219.63' CH=N41°08'41"E CH=197.79'		

LINE DATA

L-1 = N 45°49'58"W ~ 95.37'
L-2 = S 86°16'36" E ~ 10.00'
L-3 = S 03°43'24" W ~ 8.00'



INSET "A"
1" = 10'

RECEIVED

JUL 18 2013

Franklin County Engineer
Dean C. Ringle, P.E., P.S.

SOURCE DOCUMENTS

- CENTERPOINT PHASE I
P.B. 110, PG. 59
- FAIRCHILD ESTATES, SECTION 4
P.B. 87, PG. 67
- BIXBY GROVE, SECTION 2, PHASE 1
P.B. 105, PG. 11
- SWISHER ROAD
ROAD RECORD NO. 11, PG. 441
- DEEDS OF RECORD
INSTRUMENT NUMBER 200402200036407
INSTRUMENT NUMBER 200402200036797
INSTRUMENT NUMBER 201012160171033

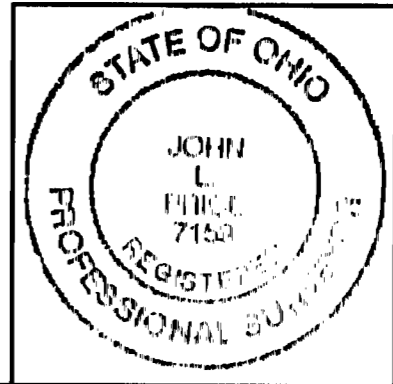
BASIS OF BEARING

BEARINGS ARE BASED ON SOUTH 03°47'55" WEST, ALONG THE EAST LINE OF SAID SECTION 30, THE EAST LINE OF SAID 127.234 ACRE TRACT AS DESCRIBED IN A DEED TO CP ONE, LLC, FILED ON MAY 30, 2012 OF RECORD IN INSTRUMENT NUMBER 201205300075566, ON FILE IN THE RECORDER'S OFFICE, FRANKLIN COUNTY, OHIO.

SURVEY CERTIFICATION

THE FOREGOING BOUNDARY PLAT HAS BEEN PREPARED FROM AN ACTUAL FIELD SURVEY OF THE PREMISES IN MARCH, 2013 UNDER THE DIRECT SUPERVISION OF JOHN L. PRICE, PROFESSIONAL SURVEYOR NO. 7159. IRON PINS REFERENCED TO BE SET ARE 5/8" REBAR, 30" LONG WITH PLASTIC CAP STAMPED "BRH GROUP".

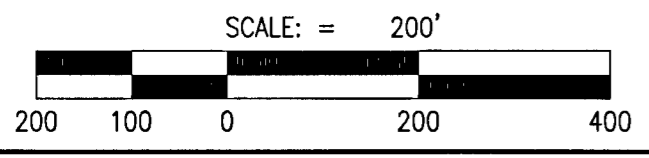
John L. Price
JOHN L. PRICE
PROFESSIONAL SURVEYOR No. 7159
07/08/2013
DATE



BRH Group, Inc.
Engineering & Surveying
751 Northwest Blvd., Suite 300
Columbus, Ohio 43212-3856
Phone: (614) 220-9122
Fax: (614) 572-0446
Email: info@brhgroup.com

LOT SPLIT SURVEY
SCALE: 1" = 200' 07/08/2013

V:\4003145 - CP V & STREET SURVEY - DWG\CP 4 - BOUNDARY MAPPING.DWG



- LEGEND**
- ☒ = FRANKLIN COUNTY MONUMENT
 - = IRON PIN FOUND
 - = IRON PIN SET (5/8" REBAR, 30" LONG WITH PLASTIC CAP STAMPED "BRH GROUP").