

H-2-D



Evans, Mechwart, Hambleton & Tilton, Inc.  
Engineers • Surveyors • Planners • Scientists  
5300 New Albany Road, Columbus, OH 43054  
Phone: 614.775.4500 Toll Free: 888.775.3648  
emht.com

# SURVEY OF ACREAGE PARCEL

VIRGINIA MILITARY SURVEY NO. 478  
CITY OF GROVE CITY, COUNTY OF FRANKLIN, STATE OF OHIO

Date: July 31, 2013

Job No. 2013-1127

Scale: 1" = 40'

**RECEIVED**

AUG 05 2013

Franklin County Engineer  
Dean C. Ringle, P.E., P.S.

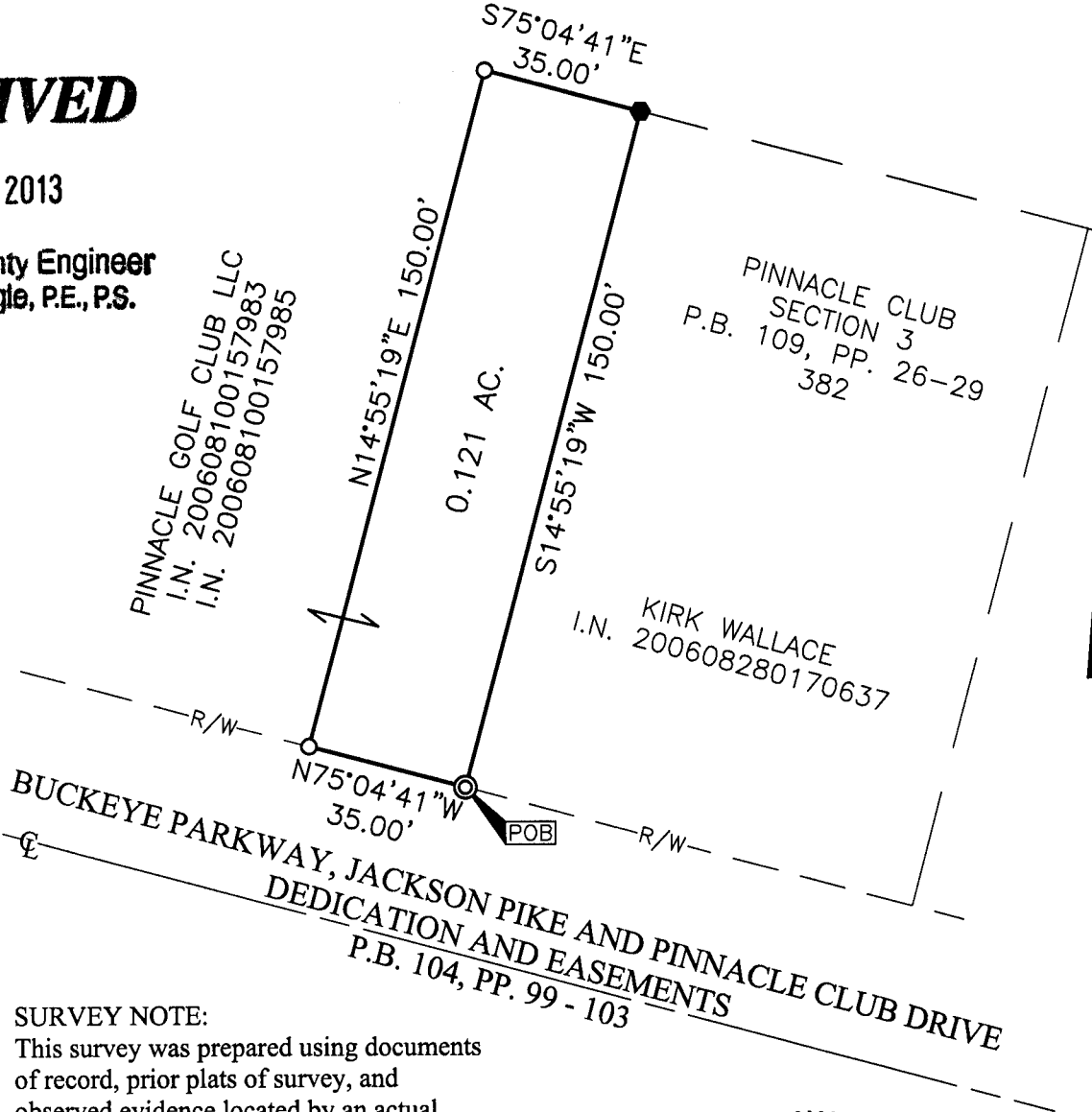
PINNACLE GOLF CLUB LLC  
I.N. 200608100157983  
I.N. 200608100157985

0.121 AC.

PINNACLE CLUB  
SECTION 3  
P.B. 109, PP. 26-29  
382

KIRK WALLACE  
I.N. 200608280170637

J:\2013\1127\DWG\04-SHEETS\BOUNDARY\20131127-VS-BNDY.DWG plotted by BAXTER, THERESA on 8/2/2013 9:19:05 AM last saved by BAXTER on 8/2/2013 9:18:49 AM Xrefs:

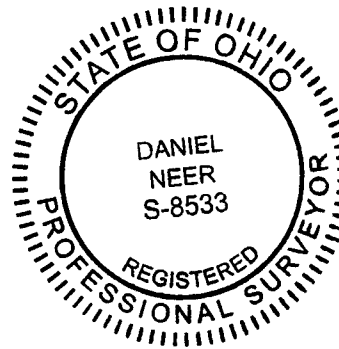


**SURVEY NOTE:**

This survey was prepared using documents of record, prior plats of survey, and observed evidence located by an actual field survey in July, 2013.

**BASIS OF BEARINGS:**

The Bearings shown hereon are based on the north right-of-way line of Pinnacle Club Drive, as shown on that plat entitled "Pinnacle Club Section 3" of record in Plat Book 109, Pages 26-29, Recorder's Office, Franklin County, Ohio, having a bearing of North 75° 04' 41" West.



By D. Neer  
Daniel A. Neer  
Professional Surveyor No. 8533

8-2-13  
Date

- = I.P. SET
- = MAG. NAIL FND.
- ⊙ = PERMANENT MARKER SET

I.P. Set are 13/16" I.D. iron pipe with cap inscribed EMHT INC. Permanent Marker Set is a one-inch solid iron pin with a punched top.



GRAPHIC SCALE (in feet)