

H-1-C.



Evans, Mechwart, Hambleton & Tilton, Inc.  
Engineers • Surveyors • Planners • Scientists  
5500 New Albany Road, Columbus, OH 43054  
Phone: 614.775.4500 Toll Free: 888.775.3648  
emht.com

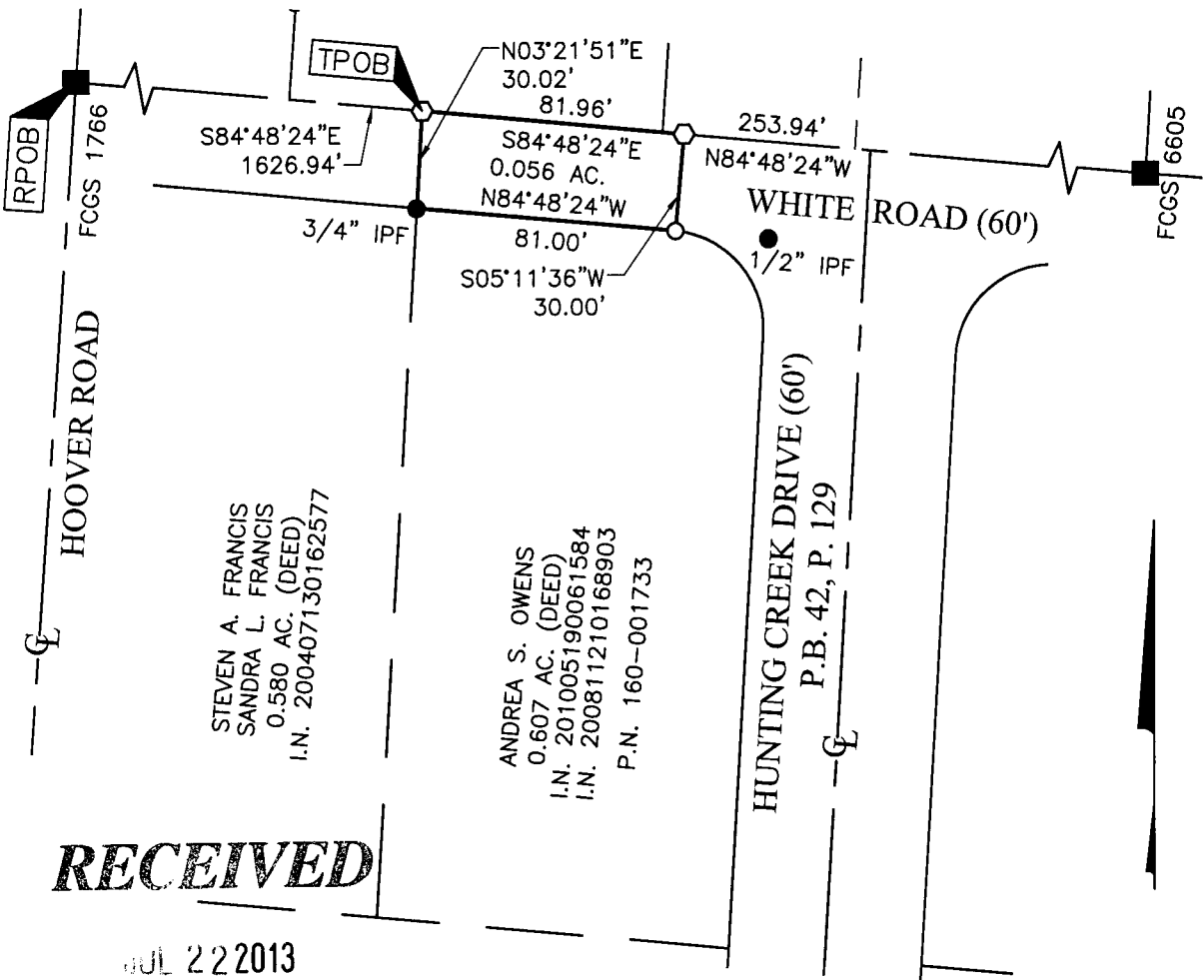
# SURVEY OF ACREAGE PARCEL

VIRGINIA MILITARY SURVEY NO. 6840  
TOWNSHIP OF JACKSON,  
COUNTY OF FRANKLIN, STATE OF OHIO

Date: 7/10/13

Job No. 2013-0112

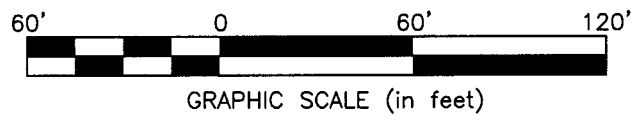
Scale: 1" = 60'



**RECEIVED**

JUL 22 2013

Franklin County Engineer  
Dean C. Ringle, P.E., P.S.



- = STONE FND.
- = MON. FND.
- = I.P. FND.
- = I.P. SET
- = MAG. NAIL FND.
- = MAG. NAIL SET
- ▲ = R.R. SPK. FND.
- △ = R.R. SPK. SET
- ◆ = P.K. NAIL FND.

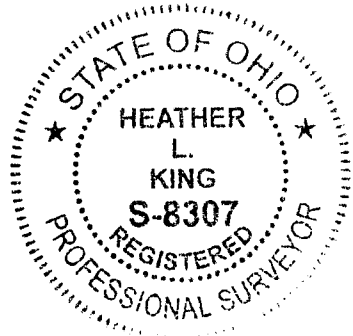
I.P. Set are 13/16" I.D. iron pipe with cap inscribed EMHT INC

### BASIS OF BEARINGS:

The Bearings shown hereon are based on the Ohio State Plane Coordinate System, South Zone per NAD83 (1986 Adjustment). Control for bearings was from coordinates of monuments FCGS 6633 and FCGS 0025. The portion of the centerline of White Road between monuments FCGS 6605 and FCGS 6606, having a bearing of South 85° 28' 28" East and monumented as shown hereon, is designated the "basis of bearing" for this survey.

### SURVEY NOTE:

This survey was prepared using documents of record, prior plats of survey, and observed evidence located by an actual field survey.



By Heather L. King 7/22/13  
Heather L. King Date  
Professional Surveyor No. 8307

J:\20130112\DWG\04SHEETS\BOUNDARY\20130112-VS-BNDY-17.DWG plotted by WEBB, TEAGUE on 7/10/2013 12:49:09 PM last saved by TWEBB on 7/10/2013 12:49:07 PM