



Evans, Mechwart, Hambleton & Tilton, Inc.  
 Engineers • Surveyors • Planners • Scientists  
 5500 New Albany Road, Columbus, OH 43054  
 Phone: 614.775.4500 Toll Free: 888.775.3648  
 emht.com

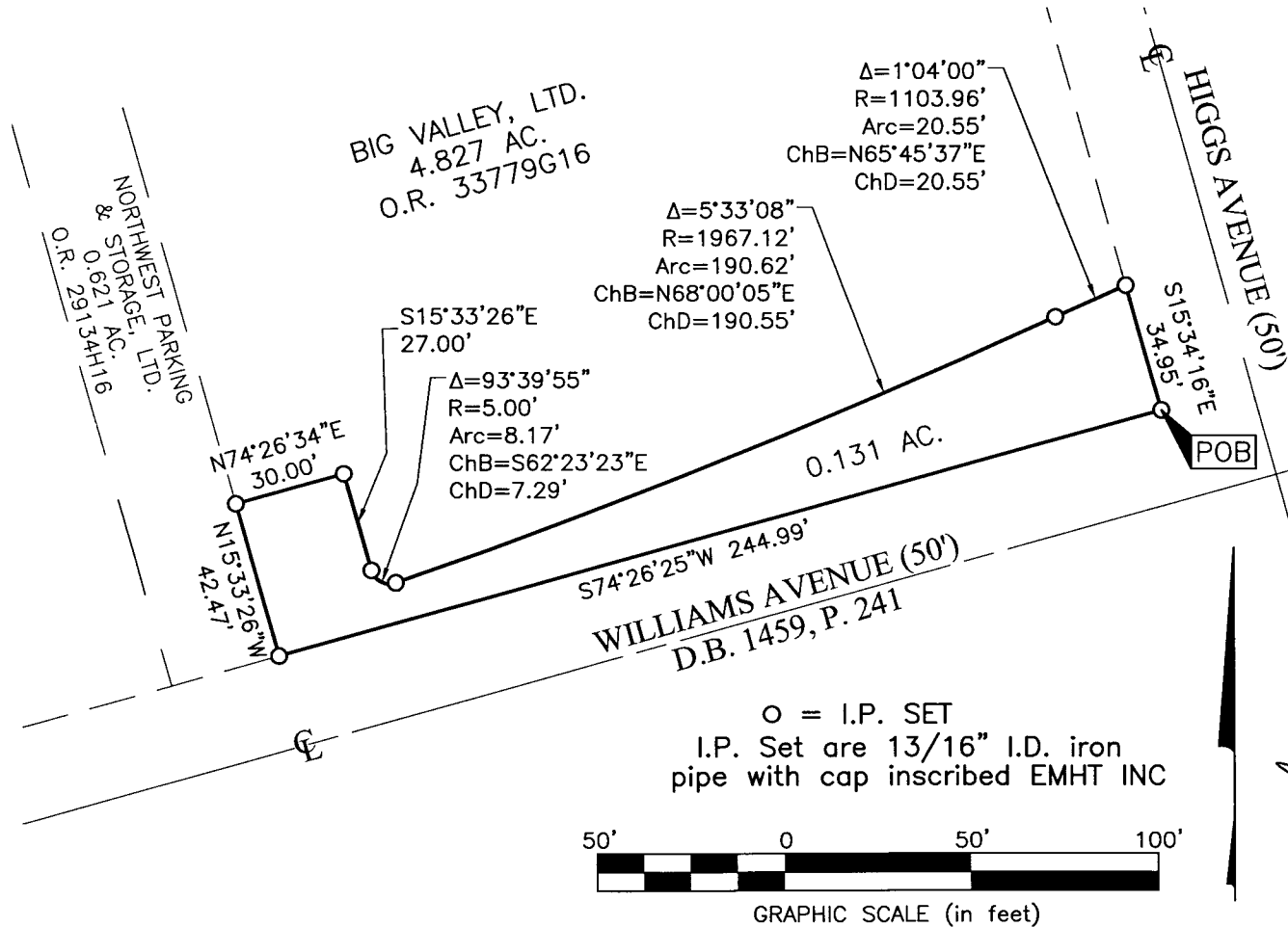
# SURVEY OF ACREAGE PARCEL

SECTION 7, TOWNSHIP 5, RANGE 22  
 REFUGEE LANDS  
 CITY OF GRANDVIEW HEIGHTS, COUNTY OF FRANKLIN, STATE OF OHIO

Date: August 27, 2013

Scale: 1" = 50'

Job No. 2010-1637



**BASIS OF BEARINGS:**

The bearings shown hereon are based on the Ohio State Plane Coordinate System South Zone as per NAD83 (1986 adjustment). Control for the bearings was from coordinates of monuments 5-83 and 4-83, having a bearing of North  $00^{\circ}22'10''$  West, for a portion of the west limited access right-of-way of Olentangy River Road, established by the Franklin County Engineering Department using Global Positioning System procedures and equipment.

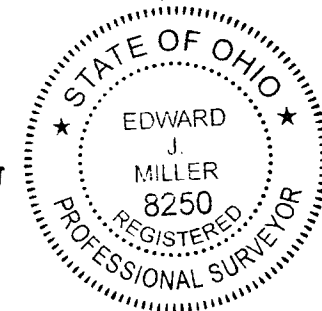
**SURVEY NOTE:**

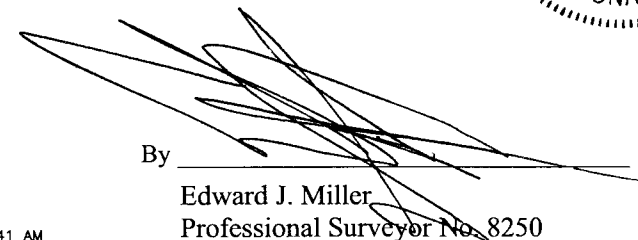
This survey was prepared using documents of record, prior plats of survey, and observed evidence located by an actual field survey.

**RECEIVED**

AUG 28 2013

Franklin County Engineer  
 Dean C. Ringle, P.E., P.S.



By  Date 9/20/13  
 Edward J. Miller  
 Professional Surveyor No. 8250