

**SURVEY EXHIBIT OF 7.450 ACRE LOT SPLIT  
FROM THE SHOLTES, SEELIG and VILLIERS TRACT  
PART OF THE S.W. QUARTER OF SECTION 21  
TOWNSHIP 11 NORTH OF THE BUCKINGHAM SURVEY  
OF RANGE 21 WEST OF THE  
CONGRESS LANDS EAST OF THE SCIOTO RIVER  
CITY OF GROVEPORT, FRANKLIN COUNTY, OHIO**

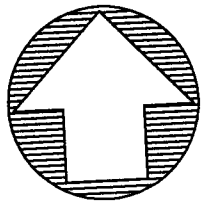
**SANDS  
DECKER  
CPS**  
ENGINEERS • SURVEYORS

128 EAST MAIN ST  
PO BOX 188  
LOGAN, OH 43138  
740-385-2140

1495 OLD HENDERSON RD  
COLUMBUS, OH 43220  
614-459-6992

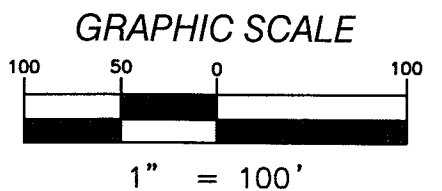
507 MAIN STREET, SUITE 203  
ZANESVILLE, OH 43701  
740-450-1640

FAX: 614-459-6987  
TOLL FREE: 866-277-0600



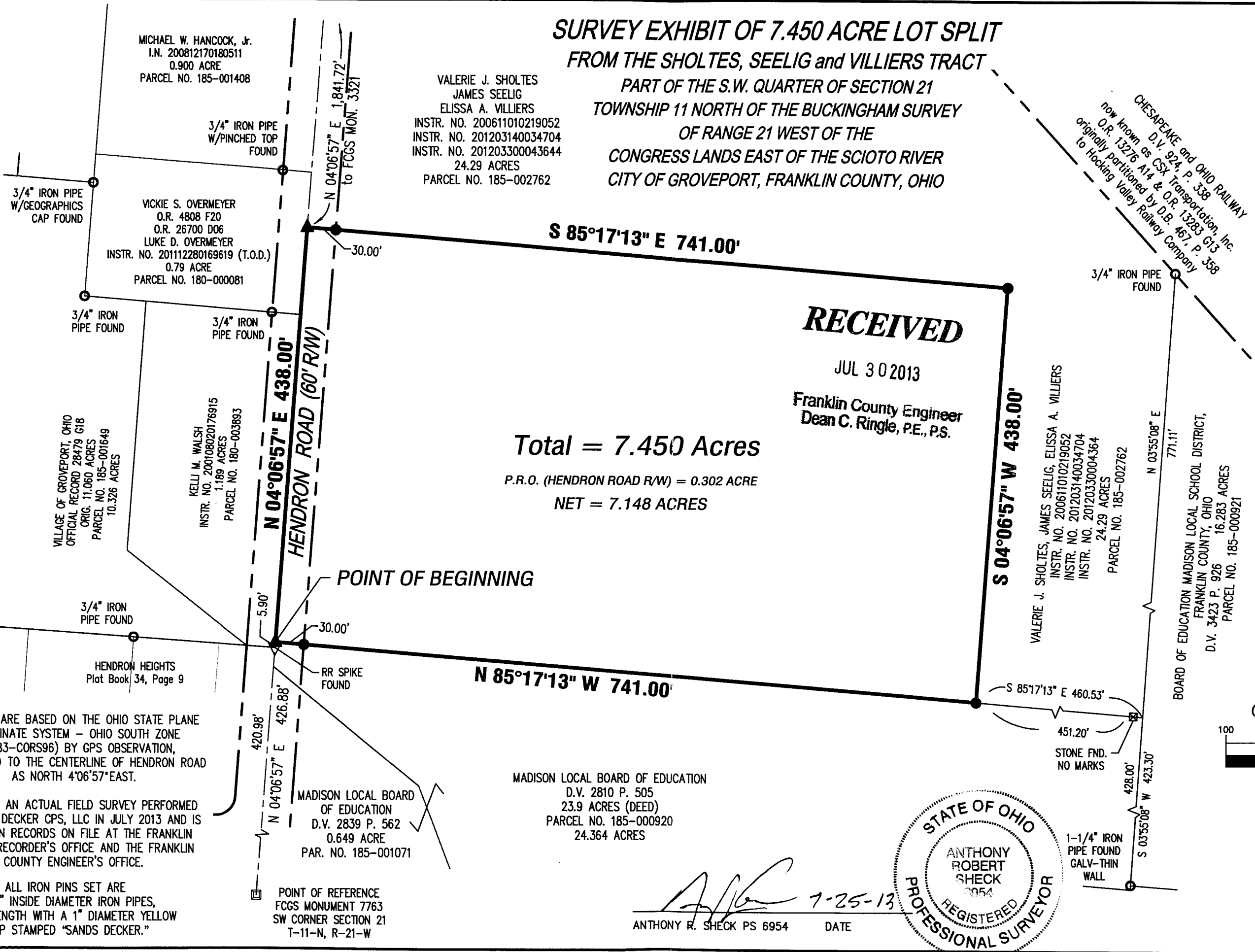
NORTH

- ⊙ IRON PIN FOUND
- IRON PIN SET
- ▲ MAG NAIL SET



**OHIO  
Utilities Protection  
SERVICE**  
1-800-362-2764  
or Dial 8-1-1

SDCPS PROJECT NO. 2613  
JULY 25, 2013



**Total = 7.450 Acres**  
P.R.O. (HENDRON ROAD R/W) = 0.302 ACRE  
**NET = 7.148 ACRES**

**RECEIVED**  
JUL 30 2013  
Franklin County Engineer  
Dean C. Ringle, P.E., P.S.



*[Signature]* 7-25-13  
ANTHONY R. SHECK PS 6954      DATE

BEARINGS ARE BASED ON THE OHIO STATE PLANE COORDINATE SYSTEM - OHIO SOUTH ZONE (NAD83-CORS96) BY GPS OBSERVATION, REFERENCED TO THE CENTERLINE OF HENDRON ROAD AS NORTH 4°06'57" EAST.

BASED ON AN ACTUAL FIELD SURVEY PERFORMED BY SANDS DECKER CPS, LLC IN JULY 2013 AND IS BASED ON RECORDS ON FILE AT THE FRANKLIN COUNTY RECORDER'S OFFICE AND THE FRANKLIN COUNTY ENGINEER'S OFFICE.

ALL IRON PINS SET ARE 3/4" INSIDE DIAMETER IRON PIPES, 30" IN LENGTH WITH A 1" DIAMETER YELLOW CAP STAMPED "SANDS DECKER."

MADISON LOCAL BOARD OF EDUCATION  
D.V. 2810 P. 505  
23.9 ACRES (DEED)  
PARCEL NO. 185-000920  
24.364 ACRES

MADISON LOCAL BOARD OF EDUCATION  
D.V. 2839 P. 562  
0.649 ACRE  
PAR. NO. 185-001071

POINT OF REFERENCE  
FCGS MONUMENT 7763  
SW CORNER SECTION 21  
T-11-N, R-21-W

These drawings are instruments of professional service by Sands Decker CPS, LLC for the designated project. Sands Decker CPS, LLC assumes no liability for unauthorized use of these drawings, specifications, and documents.