

# BOUNDARY SURVEY OF 7.735 ACRES ON CROSSWIND DR.

SITUATED in the State of Ohio, County of Franklin, City of Columbus, and being a part of Virginia Military Survey No. 1462, and being part of a 2.454 acre tract conveyed to Discon Services, Inc. in O.R. 12430 C-18 and part of a 16.524 acre tract conveyed to Discon Services, Inc. in O.R. 9989 I-14, Franklin County Recorder's Office.

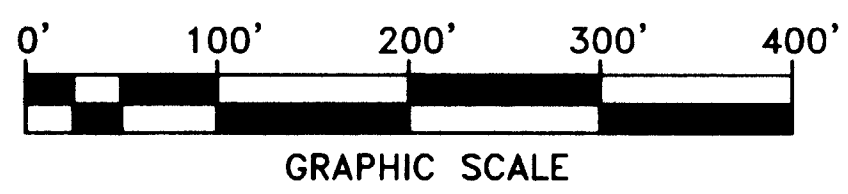
The basis of bearings is the north line of the said Crosswind Cr. as being North 88 degrees 36 minutes 46 seconds West, as shown on the said "Dedication of Kreiger Street, Crosswind Drive and Georgesville Road".

This survey meets current "Minimum Standards for Property Boundary Surveys."

CURVE DATA	NUMBER	DELTA	CD	TAN	R	L	LC
C1	07°41'19"	S 87°32'34" W	64.51	960.00	128.83	128.73	
C2	16°24'36"	N 75°29'37" E	138.42	960.00	274.95	274.01	

THIS DRAWING WAS PREPARED FROM AN ACTUAL FIELD SURVEY MADE BY PAUL K. MOORE & ASSOCIATES IN AUGUST OF 2001, AND REPRESENTS THE PREMISES SHOWN HEREON TO THE BEST OF OUR KNOWLEDGE.

*Paul J. Wood*  
RAYMOND J. WOOD REG. SURV. 7745 DATE 9/6/01



2 WORKING DAYS  
BEFORE YOU DIG  
CALL TOLL FREE 800-362-2764  
OHIO UTILITIES PROTECTION SERVICE

CONRAIL RAILROAD  
80' WIDE  
N 54°44'06" E  
1234.42'

MERIDIAN INDUSTRIAL TRUST, INC.  
7.470 ACRES DEED  
PARCEL TWO  
O.R. 33211 D-08  
  
AREA MEASURED  
325299 SQ FT  
7.468 ACRES

DISCON SERVICES, INC.  
54.508 ACRES  
TRACT THREE  
O.R. 9604 D-03

MERIDIAN INDUSTRIAL TRUST, INC.  
49.943 ACRES DEED  
PARCEL ONE  
O.R. 33211 D-08

DISCON SERVICES, INC.  
106.377 ACRES  
TRACT TWO  
O.R. 9604 D-03

CAMPBELL & CAMPBELL  
PARTNERSHIP  
12.588 ACRES  
I.N. 199807310192673

TOTAL AREA MEASURED  
336924 SQ FT  
7.735 ACRES

DISCON SERVICES, INC.  
16.524 ACRES DEED  
O.R. 9989 I-14  
AREA MEASURED  
295599 SQ FT  
6.786 ACRES

RUAN, INC.  
1.800 ACRES  
I.N. 199705230006167

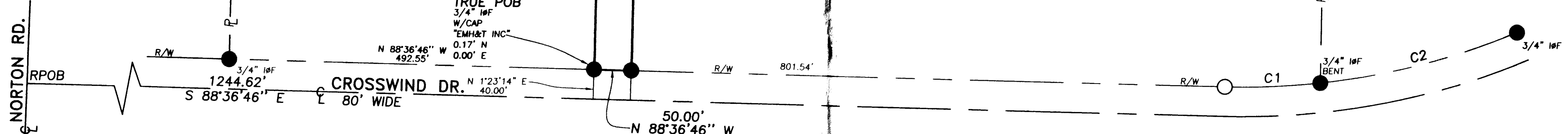
DISCON SERVICES, INC.  
2.454 ACRES DEED  
O.R. 12430 C-18  
AREA MEASURED  
41325 SQ FT  
0.949 ACRES

RUAN, INC.  
7.735 ACRES  
I.N. 199705230006166

DISCON SERVICES, INC.  
9.115 ACRES  
O.R. 27465 E-01

### LEGEND

- IRON PIN SET
- IRON PIN FOUND
- △ SPIKE SET
- ▲ SPIKE FOUND
- D.B. DEED BOOK
- O.R. OFFICIAL RECORD
- I.N. INSTRUMENT NUMBER
- IPF IRON PIN FOUND
- IPF IRON PIPE FOUND
- R/W RIGHT OF WAY
- P PROPERTY LINE



S485-10  
J. & J. SURVEYING SERVICES, INC., dba  
PAUL K. MOORE & ASSOCIATES  
6515 E. LIVINGSTON AVENUE  
REYNOLDSBURG, OHIO 43068  
PH# (614) 866-9158  
FAX# (614) 866-9132  
© 2001 J. & J. SURVEYING SERVICES, INC.

## BOUNDARY SURVEY OF 7.735 ACRES ON CROSSWIND DR.

NO.	REVISION	BY	DATE
1			
2			
3			
4			
5			

