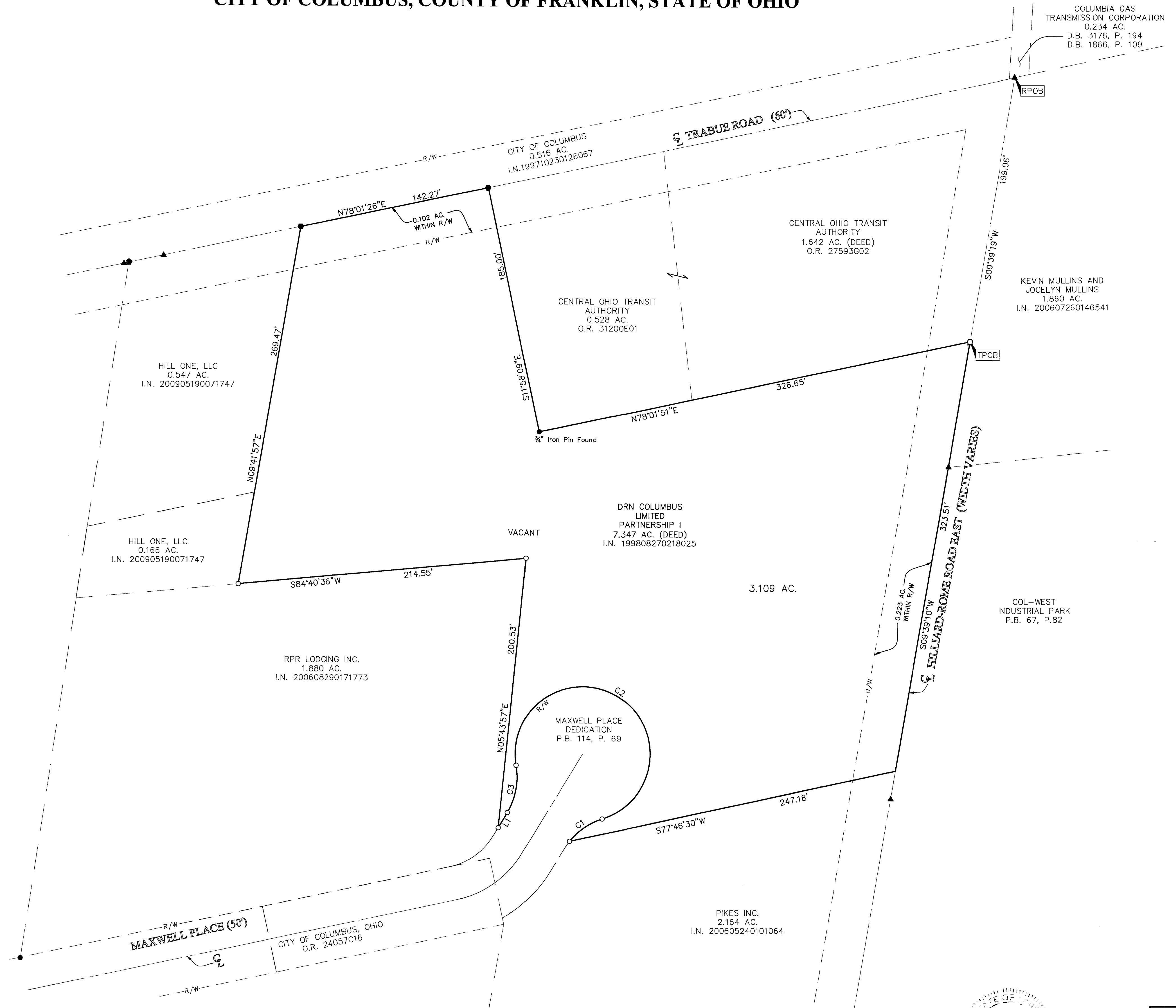


# SURVEY OF ACREAGE PARCEL

## VIRGINIA MILITARY DISTRICT SURVEY NO. 7605

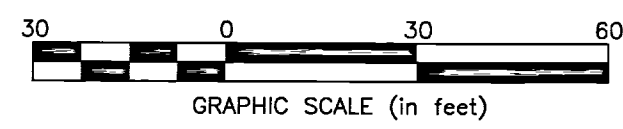
### CITY OF COLUMBUS, COUNTY OF FRANKLIN, STATE OF OHIO



LINE TABLE		
LINE	BEARING	LENGTH
L1	S31°20'20"W	12.92

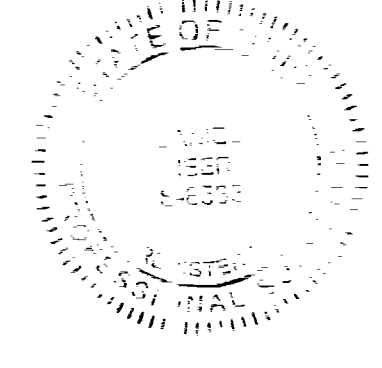
CURVE TABLE					
CURVE	DELTA	RADIUS	ARC	CH BRG	CH
C1	34°06'35"	50.00'	29.77'	N55°41'37"E	29.33'
C2	262°49'09"	50.00'	229.35'	N58°39'40"W	75.00'
C3	41°24'35"	50.00'	36.14'	S10°38'03"W	35.36'

- = STONE FND.
- = MON. FND.
- = I.P. FND.
- = I.P. SET
- = MAG. NAIL FND.
- = MAG. NAIL SET
- ▲ = R.R. SPK. FND.
- △ = R.R. SPK. SET
- = P.K. NAIL FND.
- = I.P. Set are 13/16" I.D. iron pipe with cap inscribed EMHT INC



**BASIS OF BEARINGS:**  
 The bearings shown hereon are based on the Ohio State Plane Coordinate System, South Zone, NAD83 (NSRS 2007). Said bearings originated from a field traverse which was tied (referenced) to said coordinate system by GPS observations and observations of selected Franklin County Engineering Department monuments FGGs 4434 and FGGs 5407. The northerly right of way line of Renner Road, having a bearing of North 78° 06' 31" East is designated the "basis of bearing" for this survey.

**SURVEY NOTE:**  
 This survey was prepared using documents of record, prior plats of survey, and observed evidence located by an actual field survey November 2012.



By D.A. Neer 7-19-13  
 Daniel A. Neer  
 Professional Surveyor No. 8533  
 Date

**RECEIVED**  
 JUL 18 2013  
 Franklin County Engineer  
 Dean C. Ring, P.E., P.S.

Date: November 13, 2012	
Scale: 1" = 30'	
Job No: 2012-1705	
Sheet: 1 of 1	
REVISIONS	
MARK	DESCRIPTION

