

SITE ENGINEERING, INC.

7453 EAST MAIN STREET
REYNOLDSBURG, OHIO 43068
PHONE: (614) 759-9900

FILE #3485
DATE: 7-5-13

SCALE: 1"=60'

Proposed R/W Data

① N86°03'47"E 24.99'

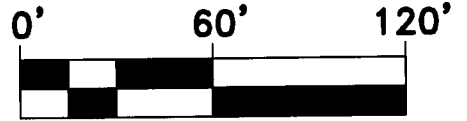
② R=25.00'
Δ=89°58'32"
A=39.26'
CB=S41°04'31"W
CH=35.35'

③ N03°54'45"W 24.99'

RECEIVED

AUG 07 2013

Franklin County Engineer
Dean C. Ringle, P.E., P.S.



GRAPHIC SCALE

The City Of Grove
City, Ohio
1.531 Ac.

Inst
#200209060221714

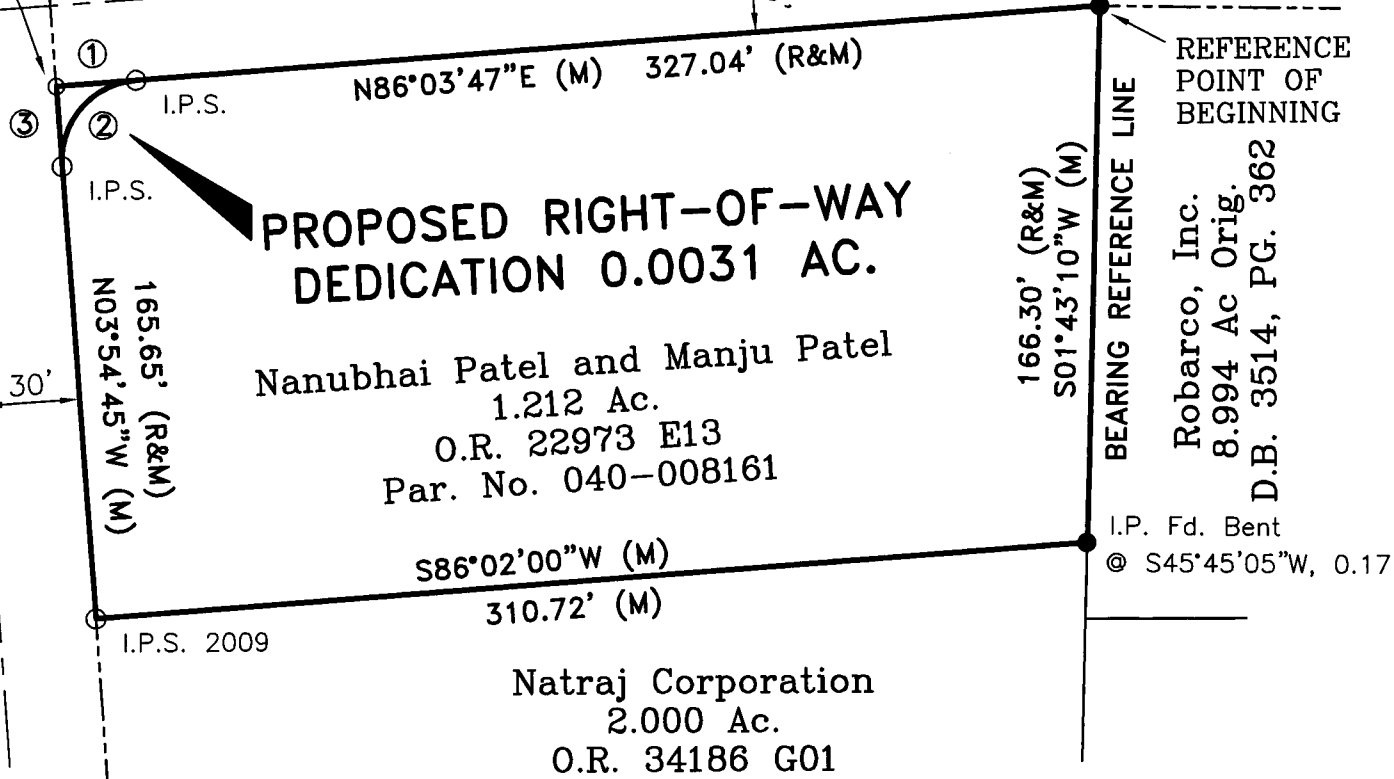
The City Of Grove City, Ohio
0.378 Ac.
O.R. 24361 A20

KILLDEER DRIVE (50')

I.P. Fd. Capped
EMH&T (flush)

REFERENCE
POINT OF
BEGINNING

Mag Nail Fd.
POINT OF BEGINNING
DRILL HOLE SET 2009
JACKPOT ROAD (60')
P.B. 39, PG. 105



Situated in the State of Ohio, County of Franklin, City of Grove City, (formerly Jackson Township) Virginia Military Survey No. 8231, being 0.0031 acres all out of that 1.212 acre tract of land described in a deed to NANUBHAI and MANJU PATEL of record in Official Record 22973E13, being part of Parcel No. 2 as same is designated and delineated on the recorded plat of "JACKPOT PARCELS" in Plat Book 39, Page 105 of record in the Recorder's Office, Franklin County, Ohio.

This plat was prepared from an actual field survey during January 2009 and August 2013 by Site Engineering, Inc. Bearings are used for the determination of angles only. For the purpose of this survey a bearing of S01°43'10" W was used on the easterly line of the parent 1.212 acre tract and all other bearings were calculated from this meridian. Iron Pins Set (I.P.S.) are 5/8" rebars, 30" long with yellow plastic caps stamped "SITE ENG INC".

SITE ENGINEERING, INC.

By Mark A. Hazel, p.s. 8-5-13
Professional Surveyor No. 7039

