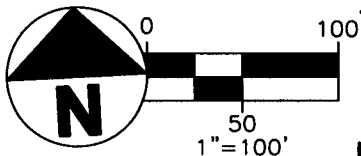


RECEIVED



JUL 08 2013

Franklin County Engineer
Dean C. Ringle, P.E., P.S.

SECTION 14, TOWNSHIP 5 N, RANGE 22 W
REFUGEE LANDS
CITY OF COLUMBUS
COUNTY OF FRANKLIN
STATE OF OHIO

BASIS OF BEARINGS

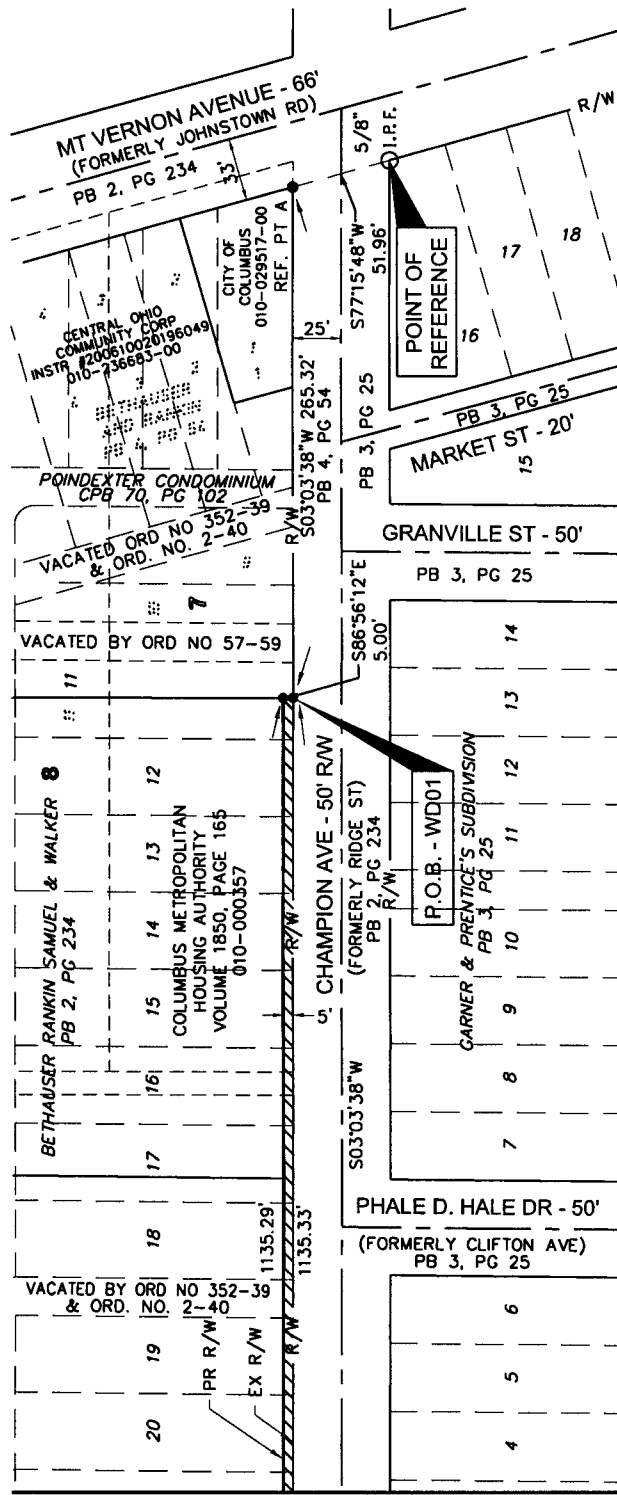
THE BEARINGS SHOWN ON THIS PLAT ARE BASED ON THE OHIO STATE PLANE COORDINATE SYSTEM, SOUTH ZONE, NAD83 (CORS96). THE CENTERLINE OF CHAMPION AVENUE, HAVING A BEARING OF SOUTH 03°03'38" EAST AND MONUMENTED AS SHOWN HEREON, IS DESIGNATED THE "BASIS OF BEARING" FOR THIS PLAT.

REFERENCE DOCUMENTS:

THE BOUNDARY SURVEY IS BASED ON PLAT BOOK 2, PAGE 234, PLAT BOOK 2, PAGE 265, PLAT BOOK 3, PAGE 436, PLAT BOOK 4, PAGE 302, CONDO PLAT 70, PAGE 102 AND VOLUME 1850, PAGE 165.

SYMBOL LEGEND

- I.R.F. IRON PIN FOUND
- IRON PIN SET, 5/8" DIAMETER BY 30" LONG REBAR WITH "CW DESIGN GROUP" CAP



CW Design Group
ENGINEERS | SURVEYORS

PHONE: 614-846-9279
972 Linkfield Drive
Worthington, Ohio 43085



I HEREBY CERTIFY THIS PLAT WAS BASED FIELD SURVEY CONDUCTED BY CW DESIGN GROUP, LLC UNDER MY GUIDANCE IN JUNE 2013 AND TO THE BEST OF MY KNOWLEDGE DEPICTS THE BOUNDARY LINES.

Charles A. Wagner
CHARLES A. WAGNER, PS-8091
CW DESIGN GROUP, LLC

7/7/2013
DATE

D:\CWDC\Project\2012\120030\Drawing\WD01.dwg July 07, 2013 1:41pm

CW Design Group
ENGINEERS | SURVEYORS

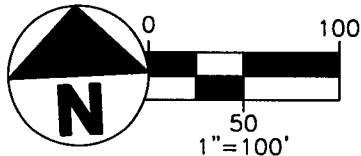
PHONE: 614-846-9279
972 Linkfield Drive
Worthington, Ohio 43085

**POINDEXTER PLACE
WD01**

12-0030

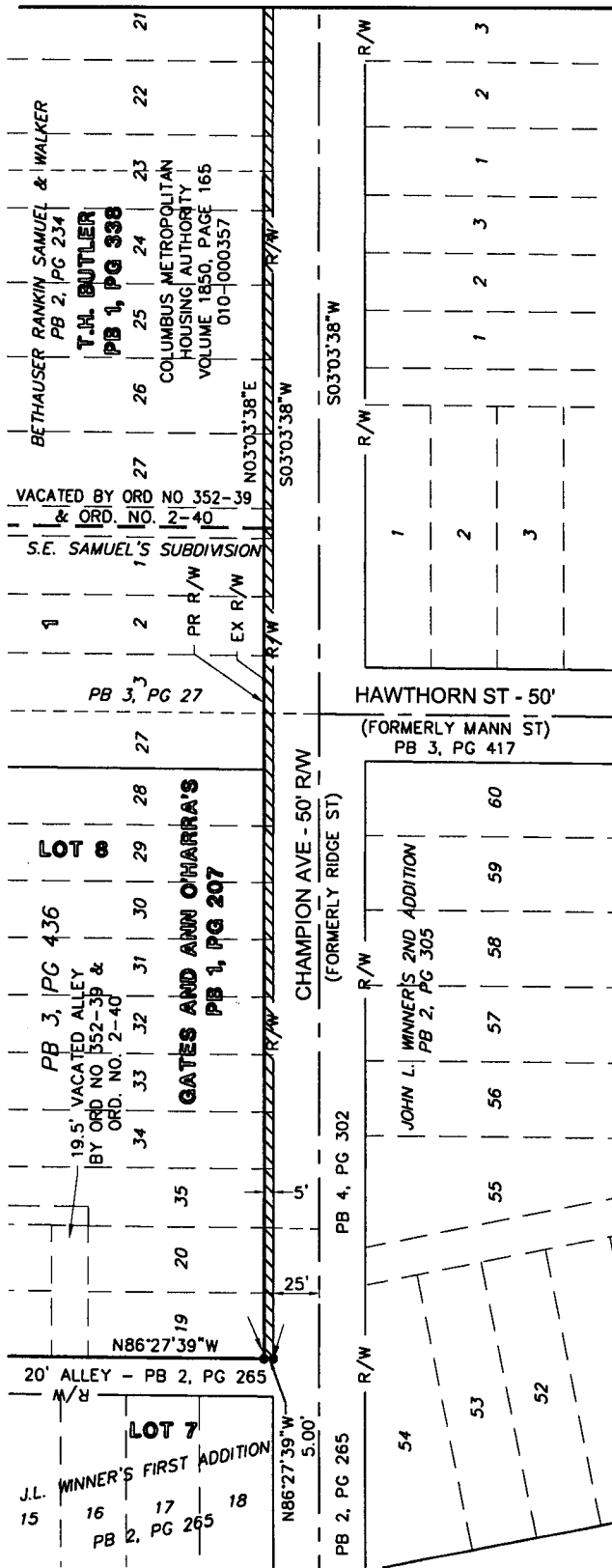
1
2

06/26/2013



SECTION 14, TOWNSHIP 5 N, RANGE 22 W
 REFUGEE LANDS
 CITY OF COLUMBUS
 COUNTY OF FRANKLIN
 STATE OF OHIO

MATCH LINE - SEE SHEET 1 / 2



RECEIVED

JUL 08 2013

Franklin County Engineer
 Dean C. Ringle, P.E., P.S.

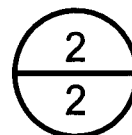
[cw design group] D:\CWDG\Project\2012\120030\Drawing\WD01.dwg July 07, 2013 1:41pm

CW Design Group
 ENGINEERS | SURVEYORS

PHONE: 614-846-9279
 972 Linkfield Drive
 Worthington, Ohio 43085

**POINDEXTER PLACE
 WD01**

12-0030



06/26/2013