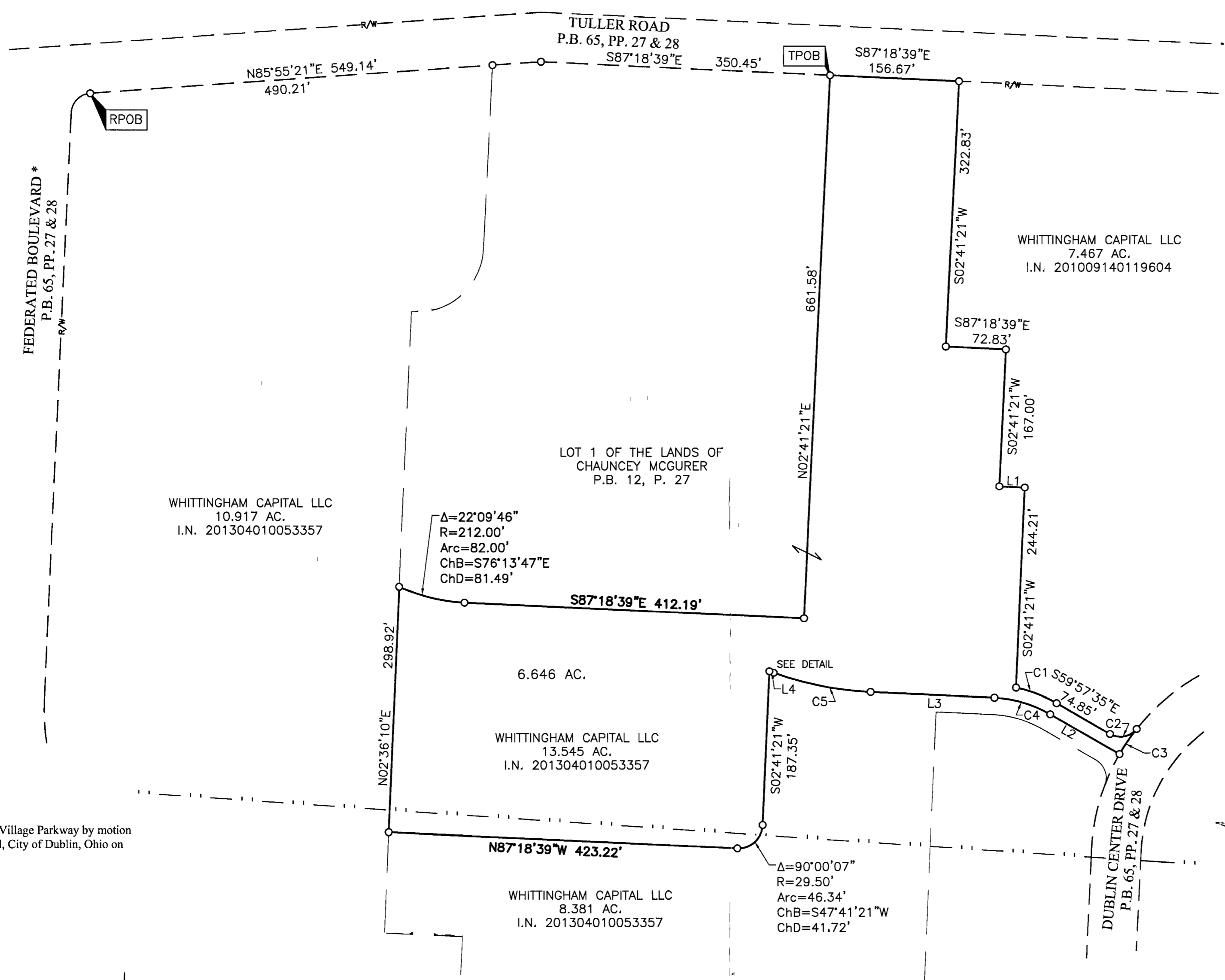


SURVEY OF ACREAGE PARCEL

QUARTER TOWNSHIP 2, TOWNSHIP 2 NORTH, RANGE 19 WEST UNITED STATES MILITARY LANDS CITY OF DUBLIN, COUNTY OF FRANKLIN, STATE OF OHIO



| Line Table | | |
|-------------|-------------|---------|
| Line Number | Direction | Length |
| L1 | S87°18'39"E | 31.00' |
| L2 | N59°57'35"W | 96.93' |
| L3 | N87°18'39"W | 150.07' |
| L4 | N70°06'34"W | 5.55' |

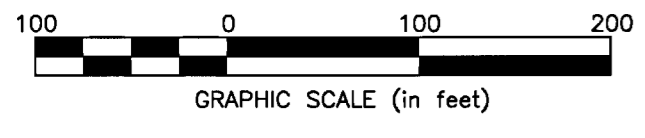
| CURVE TABLE | | | | | |
|-------------|-----------|---------|---------|---------------|----------------|
| CURVE NO. | DELTA | RADIUS | LENGTH | CHORD BEARING | CHORD DISTANCE |
| C1 | 18°21'15" | 165.50' | 53.02' | S 69°08'13" E | 52.79' |
| C2 | 81°55'30" | 25.00' | 35.75' | N 79°12'46" E | 32.78' |
| C3 | 8°13'56" | 257.88' | 37.05' | S 34°09'21" W | 37.02' |
| C4 | 27°21'08" | 150.00' | 71.61' | N 73°38'07" W | 70.93' |
| C5 | 17°12'06" | 400.00' | 120.09' | N 78°42'24" W | 119.64' |

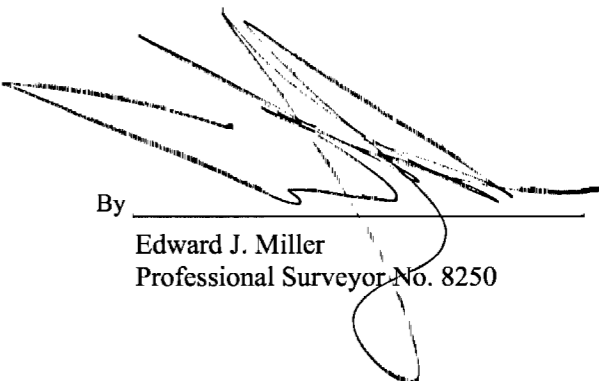
* Federated Boulevard now known as Village Parkway by motion unanimously passed by City Council, City of Dublin, Ohio on August 1, 1988.

- = STONE FND.
 - = MON. FND.
 - = I.P. FND.
 - = I.P. SET
 - = MAG. NAIL FND.
 - = MAG. NAIL SET
 - ▲ = R.R. SPK. FND.
 - ▲ = R.R. SPK. SET
 - = P.K. NAIL FND.
- I.P. Set are 13/16" I.D. iron pipe with cap inscribed EMHT INC

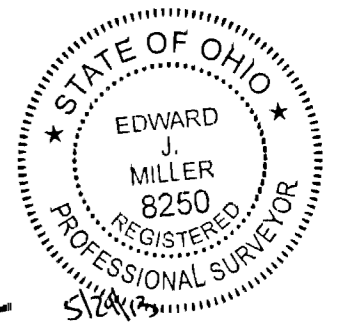
BASIS OF BEARINGS:
The Bearings shown hereon are based on the Ohio State Plane Coordinate System (South Zone) as per NAD83 (1986 Adjustment). Control for bearings was from coordinates of monuments FCGS 7772 and FCGS 7769, established by the Franklin County Engineering Department, using Global Positioning System procedures and equipment and giving a bearing of South 87°18'39" East for a portion of the southerly right-of-way line of Tuller Road, as shown hereon.

SURVEY NOTE:
This survey was prepared using documents of record, prior plats of survey, and observed evidence located by an actual field survey.



By  Edward J. Miller
Professional Surveyor No. 8250

Date _____



RECEIVED
JUN 05 2013
Franklin County Engineer
Dean C. Ringle, P.E., P.S.

| | |
|--|--------------------|
| EMHT Evans, Mechwart, Hambleton & Tilton, Inc. Engineers • Surveyors • Planners • Scientists 5500 New Albany Road, Columbus, OH 43054 Phone: 614.775.4500 Toll Free: 888.775.3648 emht.com | Date: May 22, 2013 |
| | Scale: 1" = 100' |
| | Job No: 2013-0296 |
| | Sheet: 1 of 1 |
| REVISIONS | |
| MARK | DATE DESCRIPTION |
| | |
| | |
| | |
| | |