



Evans, Mechwart, Hambleton & Tilton, Inc.
 Engineers • Surveyors • Planners • Scientists
 5500 New Albany Road, Columbus, OH 43054
 Phone: 614.775.4500 Toll Free: 888.775.3648

emht.com

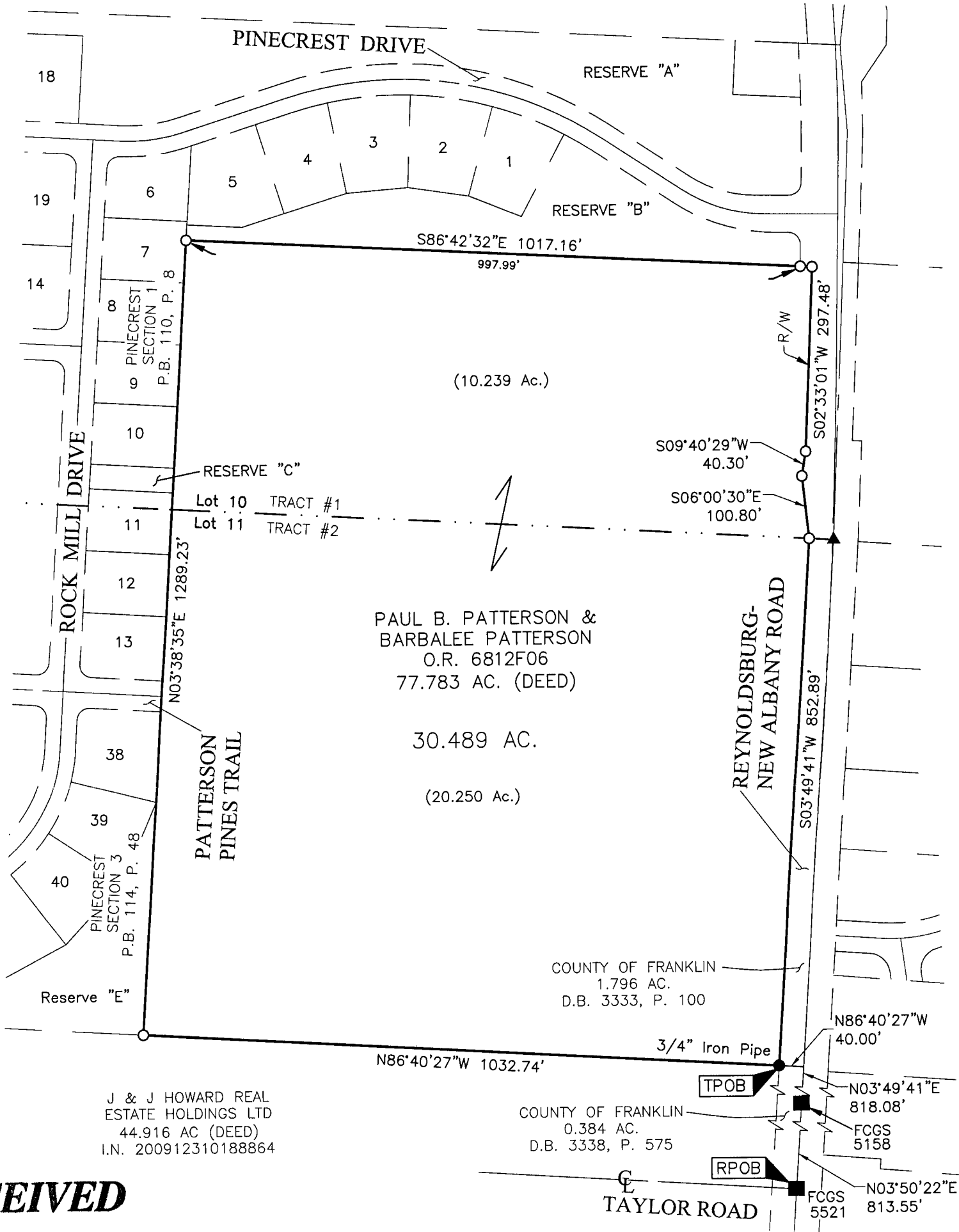
SURVEY OF ACREAGE PARCEL

LOTS 10 AND 11, QUARTER TOWNSHIP 4, TOWNSHIP 1, RANGE 16
 UNITED STATES MILITARY LANDS
 TOWNSHIP OF JEFFERSON, COUNTY OF FRANKLIN, STATE OF OHIO

Date: June 28, 2013

Job No. 2013-0959

Scale: 1" = 200'



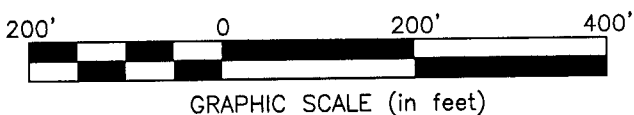
RECEIVED

JUL 05 2013

Franklin County Engineer
 Dean C. Ringle, P.E., P.S.

- = STONE FND.
- = MON. FND.
- = I.P. FND.
- = I.P. SET
- = MAG. NAIL FND.
- = MAG. NAIL SET
- ▲ = R.R. SPK. FND.
- △ = R.R. SPK. SET
- ◆ = P.K. NAIL FND.

I.P. Set are 13/16" I.D. iron pipe with cap inscribed EMHT INC

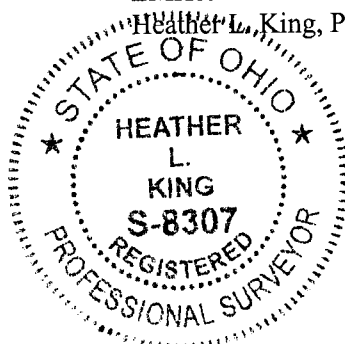


BASIS OF BEARINGS:

Bearings are based on the Ohio State Plane Coordinate System as per NAD83 (1986 adjustment). Control for bearings was from coordinates of monuments 5521 & 2214, having a bearing of South 03° 49' 41" West, being a portion of the centerline of Reynoldsburg-New Albany Road, established by the Franklin County Engineering Department, using Global Positioning System procedures and equipment.

SURVEY NOTE:

This survey was prepared using documents of record, prior plats of survey, and observed evidence located by an actual field survey performed by EMH&T in February of 2010 and retraced under the direct supervision of Heather L. King, Professional Surveyor Number 8307 in June of 2013.



By Heather L. King 7/5/13
 Heather L. King Date
 Professional Surveyor No. 8307

I:\20130959\DWG\04SHEETS\BOUNDARY\20130959-VS-BNDY.DWG plotted by KING, HEATHER on 7/1/2013 3:26:49 PM last saved by KING on 7/1/2013 3:26:38 PM