



Evans, Mechwart, Hambleton & Tilton, Inc.
Engineers • Surveyors • Planners • Scientists
5500 New Albany Road, Columbus, OH 43054
Phone: 614.775.4500 Toll Free: 888.775.3648
emht.com

SURVEY OF ACREAGE PARCELS

HALF SECTION 8, TOWNSHIP 5, RANGE 22

REFUGEE LANDS

CITY OF GRANDVIEW HEIGHTS, COUNTY OF FRANKLIN, STATE OF OHIO

Date: June 6, 2013

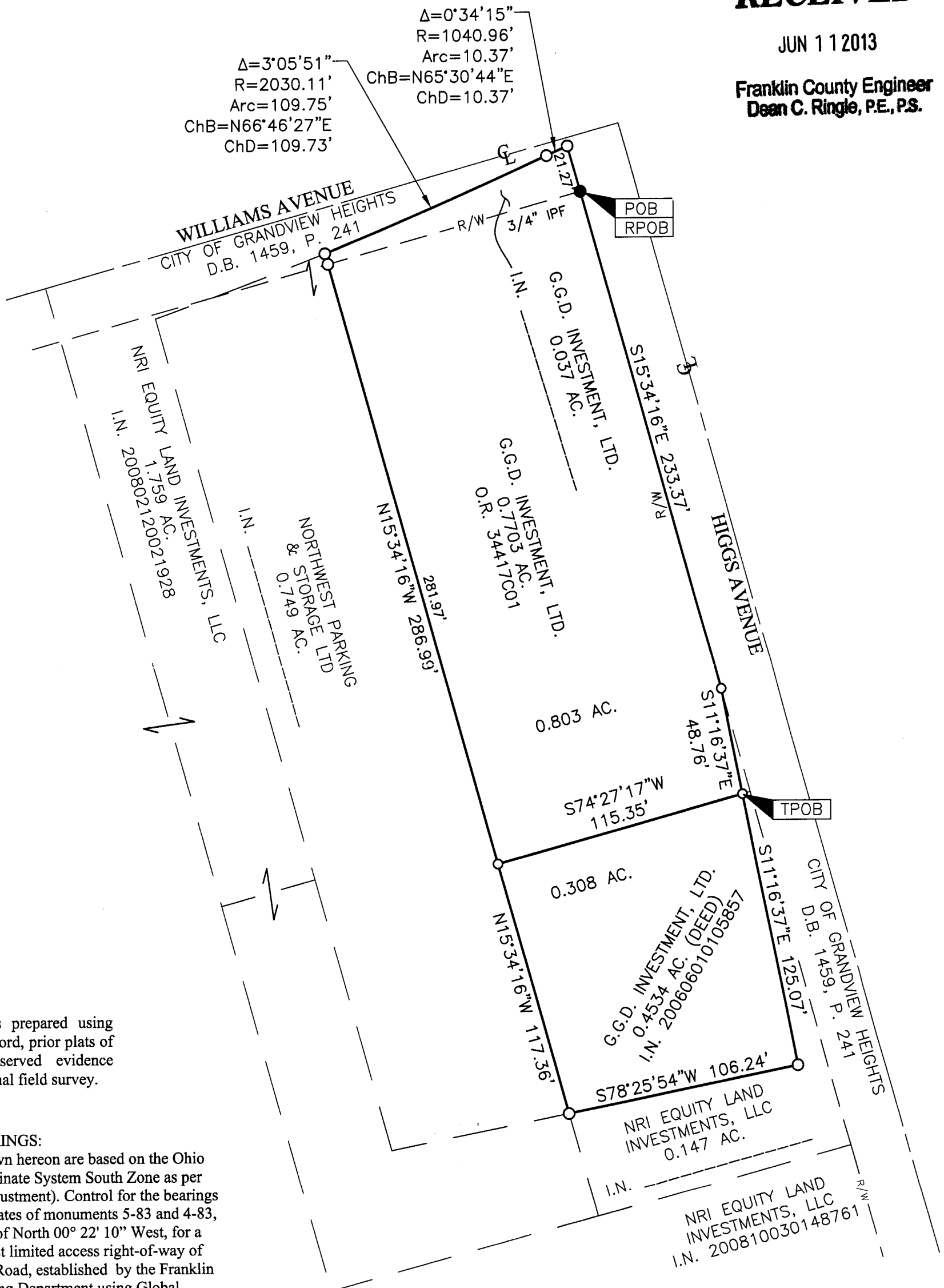
Job No. 2013-0785

Scale: 1" = 50'

RECEIVED

JUN 11 2013

Franklin County Engineer
Dean C. Ringle, P.E., P.S.



SURVEY NOTE:

This survey was prepared using documents of record, prior plats of survey, and observed evidence located by an actual field survey.

BASIS OF BEARINGS:

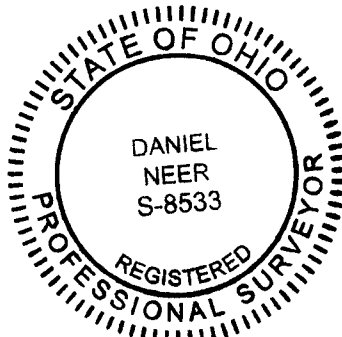
The bearings shown hereon are based on the Ohio State Plane Coordinate System South Zone as per NAD83 (1986 adjustment). Control for the bearings was from coordinates of monuments 5-83 and 4-83, having a bearing of North $00^{\circ}22'10''$ West, for a portion of the west limited access right-of-way of Olentangy River Road, established by the Franklin County Engineering Department using Global Positioning System procedures and equipment.

- = I.P. FND.
- = MAG. NAIL SET
- = I.P. SET

I.P. Set are 13/16" I.D. iron pipe with cap inscribed EMHT INC



GRAPHIC SCALE (in feet)



By D. Neer
Daniel A. Neer
Professional Surveyor No. 8533

6/11/13
Date