



Evans, Mechwart, Hambleton & Tilton, Inc.
Engineers • Surveyors • Planners • Scientists
5500 New Albany Road, Columbus, OH 43054
Phone: 614.775.4500 Toll Free: 888.775.3648
emht.com

SURVEY OF ACREAGE PARCEL

LOT 17, QUARTER TOWNSHIP 4, TOWNSHIP 2, RANGE 17
UNITED STATES MILITARY LANDS
CITY OF COLUMBUS, COUNTY OF FRANKLIN, STATE OF OHIO

Date: June 13, 2013

Scale: 1" = 60'

Job No: 2013-0733

RECEIVED

JUN 14 2013

Franklin County Engineer
Dean C. Ringle, P.E., P.S.

- = STONE FND.
- = MON. FND.
- = I.P. FND.
- = I.P. SET
- = MAG. NAIL FND.
- = MAG. NAIL SET
- ▲ = R.R. SPK. FND.
- △ = R.R. SPK. SET
- = P.K. NAIL FND.

I.P. Set are 13/16" I.D. iron pipe with cap inscribed EMHT INC

FEMA NOTE:

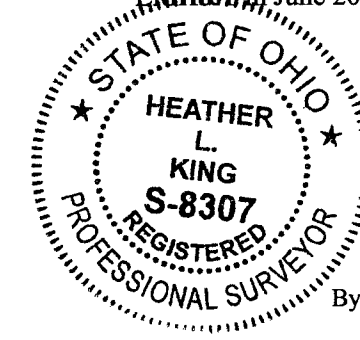
According to the Federal Emergency Management Agency's Flood Insurance Map (dated June 17, 2008), the subject tract shown hereon lies within Zone X (areas determined to be outside of the 0.2% annual chance floodplain), Community Panel No. 39049C0203 K.

BASIS OF BEARINGS:

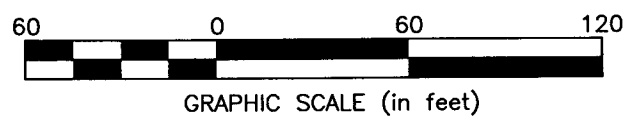
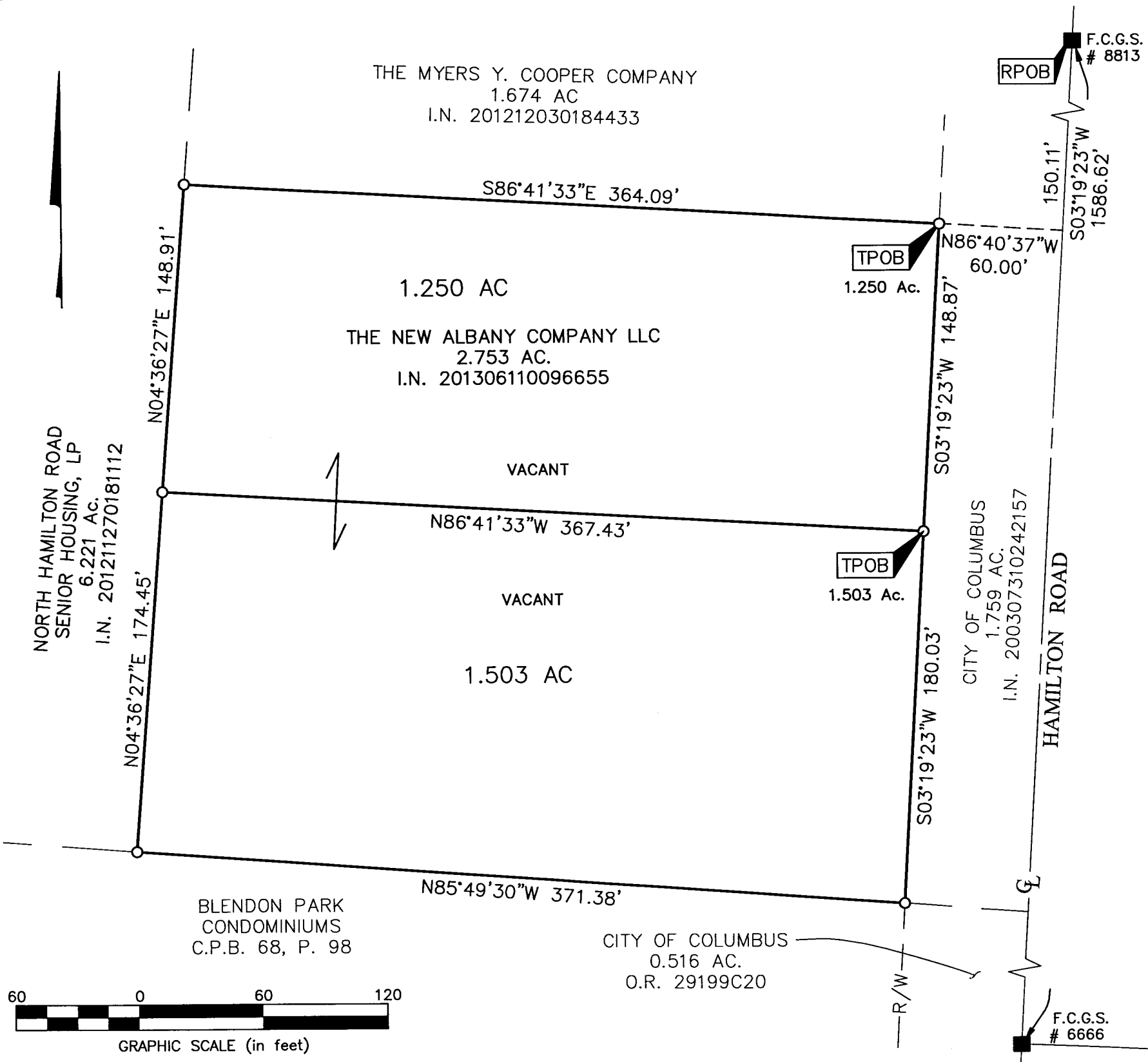
Bearings are based on Ohio State Plane Coordinate System-South Zone as per NAD83 (1986 adjustment). Control for the bearings was from coordinates from Franklin County Geodetic Survey Monument Numbers 8813 and 8814, having a bearing of North 03° 07' 54" East, established by the Franklin County Engineering Department, using Global Positioning System procedures and equipment.

SURVEY NOTE:

This survey was prepared using documents of record, prior plats of survey, and observed evidence located by an actual field survey performed by EMH&T in June 2005.



By Heather L. King 6/13/13
Heather L. King Date
Professional Surveyor No. 8307



J:\20130733\DWG\04SHEETS\BOUNDARY\20130733-VS-BNDY.DWG plotted by WEBB, TEAGUE on 6/13/2013 11:24:59 AM last saved by TWEBB on 6/13/2013 11:24:53 AM