

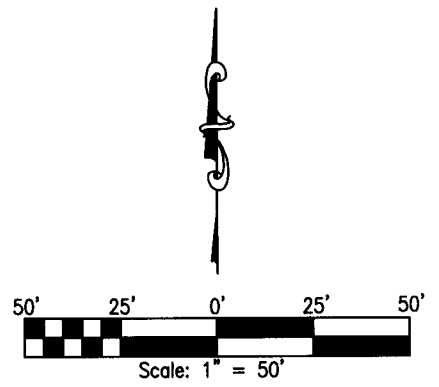
RECEIVED

MAY 22 2013

Franklin County Engineer
Dean C. Ringle, P.E., P.S.

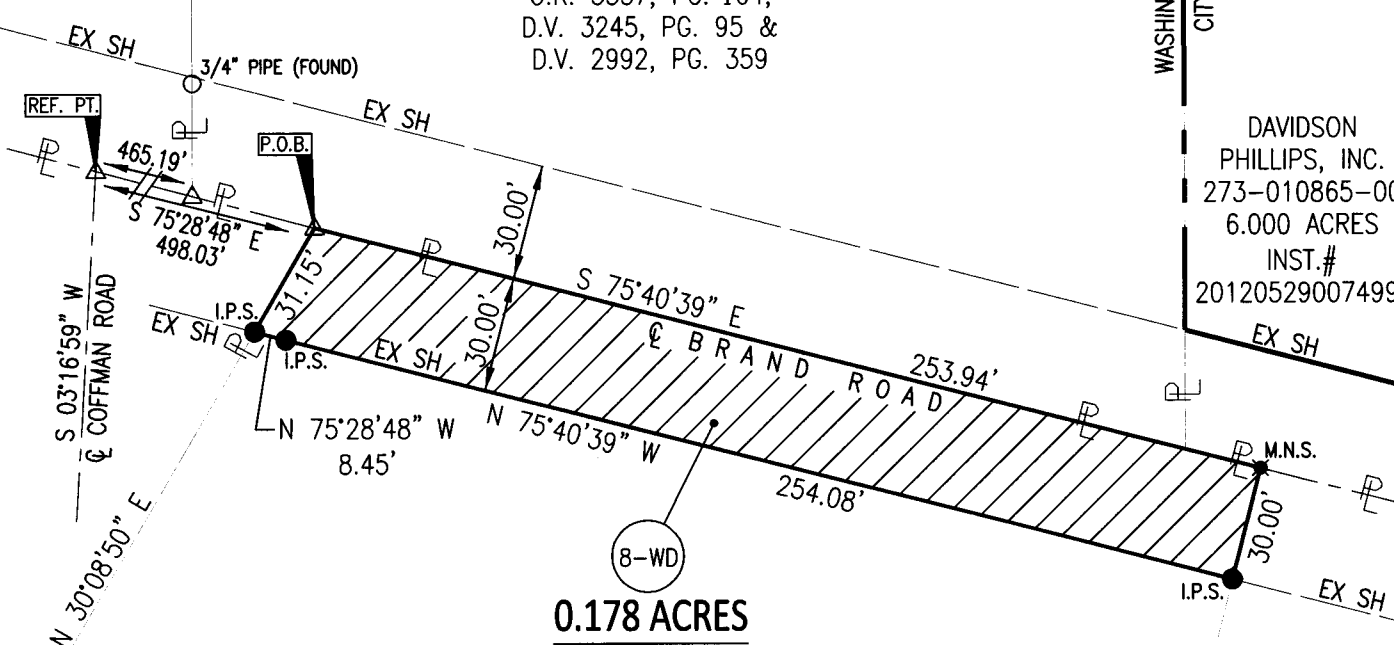
EXHIBIT B PARCEL 8-WD BRAND ROAD / COFFMAN ROAD ROUNDAABOUT

WASHINGTON TOWNSHIP, FRANKLIN COUNTY,
CITY OF DUBLIN, OHIO
V.M.S. 2543



③
JERRY GARLAND SPEARS, III
& MARSHA M. SPEARS
270-000262-00
8.000 ACRES
O.R. 5537, PG. 104,
D.V. 3245, PG. 95 &
D.V. 2992, PG. 359

DAVIDSON
PHILLIPS, INC.
273-010865-00
6.000 ACRES
INST.#
20120529007499

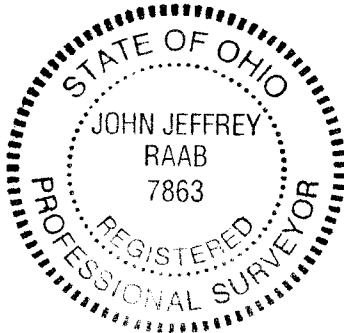


⑧-WD
0.178 ACRES

⑦
DENNIS W.
RICHARDSON
270-000293-00
0.998 ACRES
INST. #200701290017158

⑧
JON L. & COLLEEN M. REYNOLDS
270-000292-00
2.319 ACRES
INST. #200708290152547
& INST. #200003010041001
PARCEL #3
INDIAN RUN ACRES
(UNRECORDED)

⑨
BARBARA S. & R. BRUCE
MCLOUGHLIN (T.O.D.)
270-000056-00
2.044 ACRES
INST. #200709100159092
& O.R. 8836, PG. E19
PARCEL #2
INDIAN RUN ACRES
(UNRECORDED)



LEGEND:

- △ RAILROAD SPIKE FOUND
- IRON MONUMENT FOUND
- I.P.S. 3/4" I.D. PIPE SET W/CAP STAMPED "W.E. STILSON"
- ✱ M.N.S. MAGNAIL SET

BASIS OF BEARINGS:

THE BEARINGS FOR THIS SURVEY ARE BASED ON THE BEARING BETWEEN FRANKLIN COUNTY ENGINEER'S STATIONS "MCNEAL" AND "FCGS 6648" BEING S 15°07'52" E, AS MEASURED USING GPS METHODS AND THE OHIO STATE PLANE COORDINATE SYSTEM, SOUTH ZONE, NAD 83 (1986 ADJUSTMENT).



Pride in the Details. Passion in our People.
355 E. CAMPUS VIEW BLVD
COLUMBUS, OH 43235
(614) 847-4670

John Jeffrey Raab
JOHN JEFFREY RAAB, P.S. 7863 DATE 5/21/13