

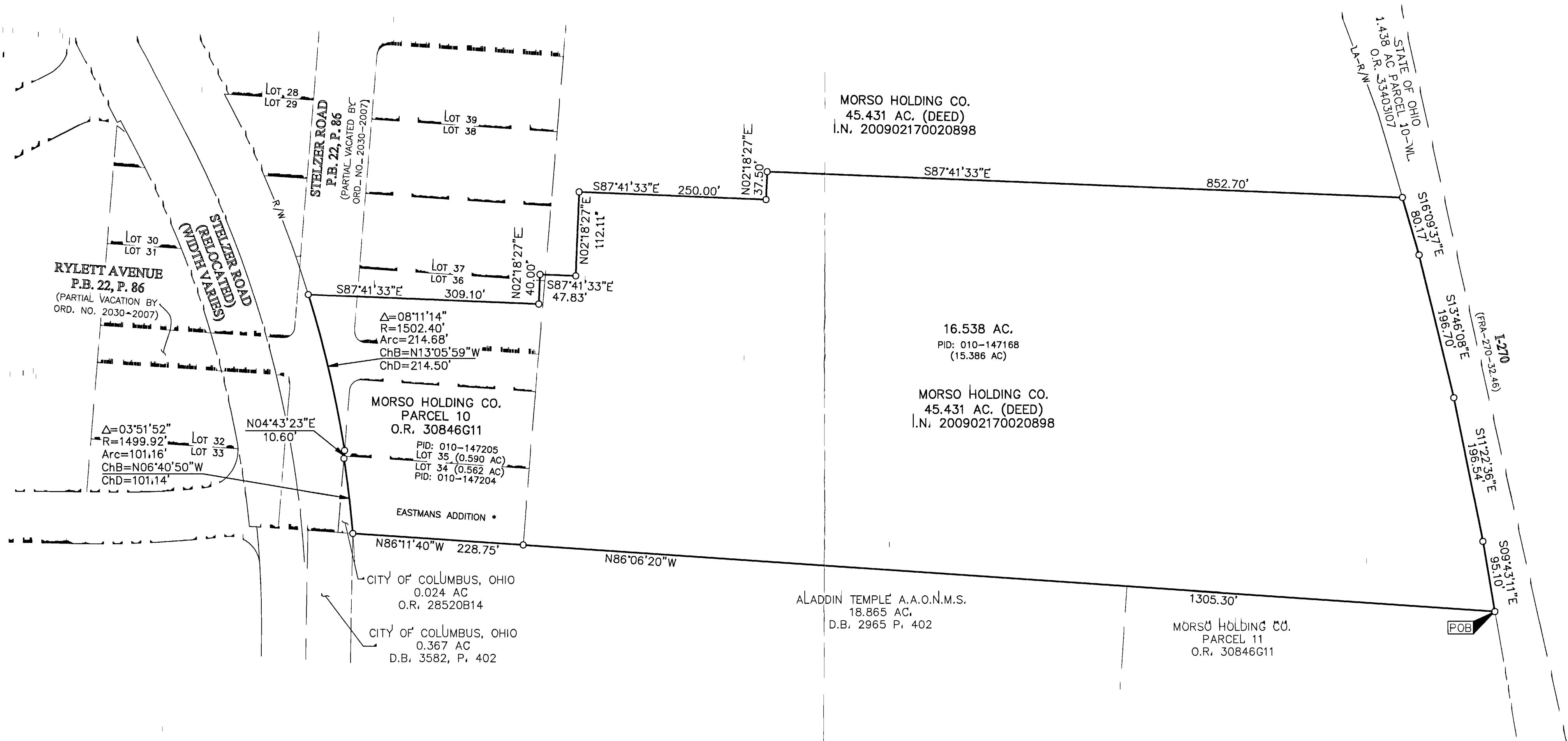
SURVEY OF ACREAGE PARCEL

QUARTER TOWNSHIP 1 & 2, TOWNSHIP 1, RANGE 17
 UNITED STATES MILITARY LANDS
 CITY OF COLUMBUS, COUNTY OF FRANKLIN, STATE OF OHIO

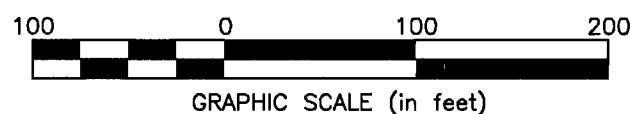
RECEIVED

APR 11 2013

Franklin County Engineer
 Dean C. Ringle, P.E., P.S.



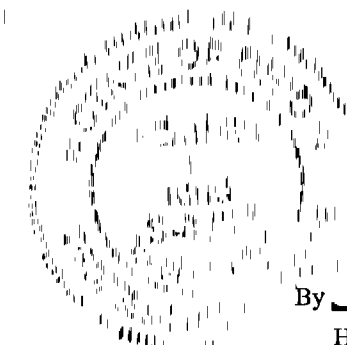
- = STONE FND.
 - = MON. FND.
 - = I.P. FND.
 - = I.P. SET
 - = MAG. NAIL FND.
 - = MAG. NAIL SET
 - ▲ = R.R. SPK. FND.
 - △ = R.R. SPK. SET
 - ◆ = P.K. NAIL FND.
- I.P. Set are 13/16" I.D. iron pipe with cap inscribed EMHT INC



BASIS OF BEARINGS: The bearings shown on this drawing were transferred from a field traverse originating from and tying to Franklin County Survey Control Monuments, including Frank 64 and Frank 164 and are based on the Ohio State Plane Coordinate System, South Zone as per NAD 83 (1986 Adjustment) with a bearing of North 04° 23' 23" East on the original centerline of Stelzer Road.

SURVEY NOTE:
 This survey was prepared using documents of record, prior plats of survey, and observed evidence located by an actual field survey completed in September 2002.

NOTE:
 * Eastmans Addition being vacated by Franklin County Court of Common Pleas Case Number 06 CVH-12-17080 and recorded in Instrument Number 200704230070602, Recorder's Office, Franklin County, Ohio.



By Heather L. King 4/11/13
 Heather L. King
 Professional Surveyor No. 8307
 Date

EMHT		Date: April 8, 2013
Evans, Mechwart, Hambleton & Tilton, Inc. Engineers • Surveyors • Planners • Scientists 5500 New Albany Road, Columbus, OH 43054 Phone: 614.775.4500 Toll Free: 888.775.3648 emht.com		Scale: 1" = 100'
		Job No: 2012-1489
		Sheet: 1 of 1
REVISIONS		
MARK	DATE	DESCRIPTION

I:\2012\1489\DWG\04\EMHTS\BOUNDARY\20121489BNDY.DWG plotted by KING, HEATHER on 4/8/2013 11:29:39 AM last saved by KING on 4/8/2013 11:29:37 AM