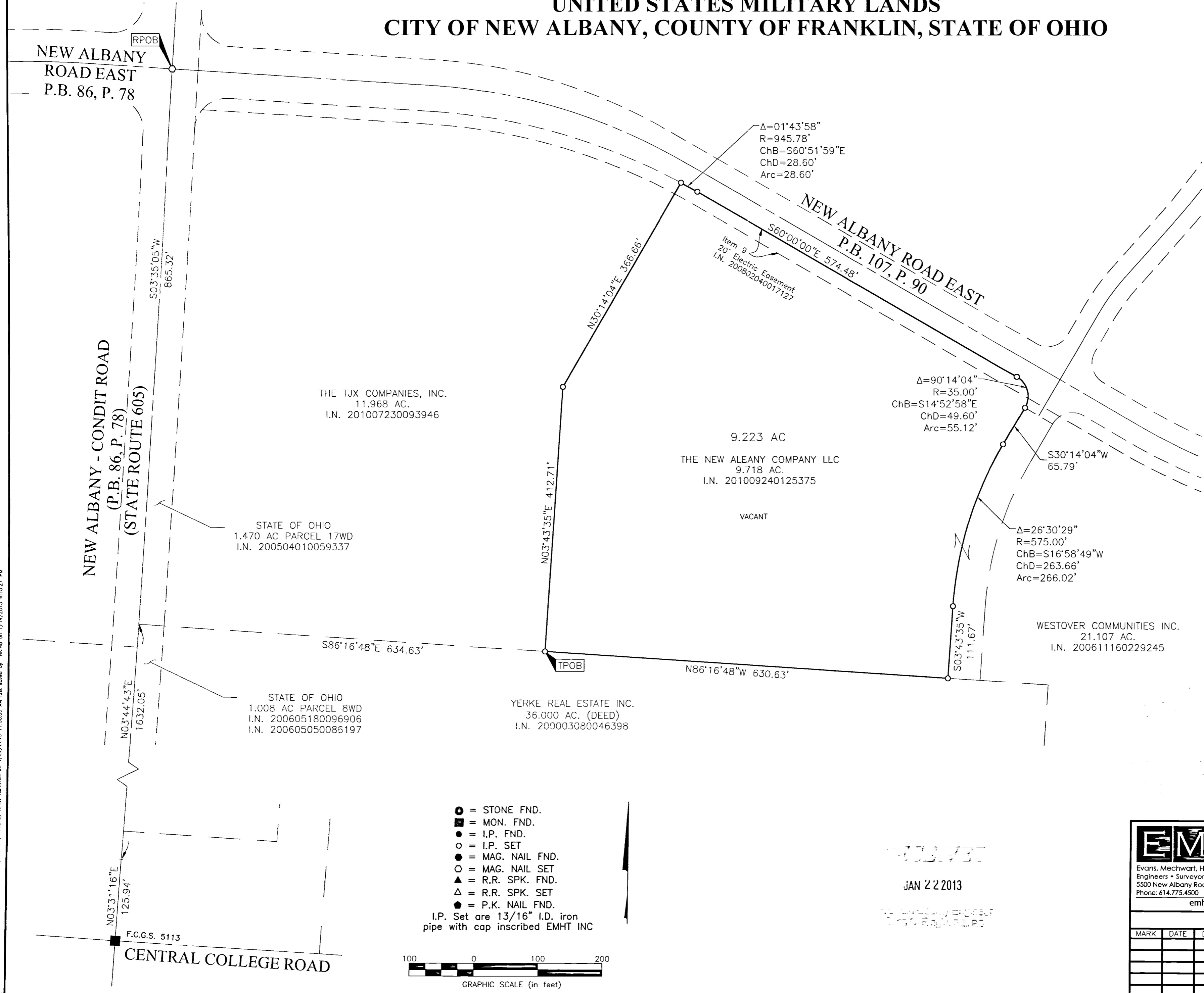


SURVEY OF ACREAGE PARCEL

SECTION 8, QUARTER TOWNSHIP 1, TOWNSHIP 2, RANGE 16

UNITED STATES MILITARY LANDS

CITY OF NEW ALBANY, COUNTY OF FRANKLIN, STATE OF OHIO



BASIS OF BEARINGS:
 Bearings shown herein are based on the Ohio State Plane Coordinate System South Zone as per NAD83 (1986 Adjustment). Control for bearings was from coordinates of monuments Frank 80 and Frank 180, established by the Franklin County Engineering Department, using Global Positioning System procedures and equipment, giving a bearing of South 86° 24' 55" East for a portion of the centerline of New Albany Road East, of record in Plat Book 107, Page 90, Recorder's Office, Franklin County, Ohio.

SURVEY NOTE:
 This survey was prepared using documents of record, prior plats of survey, and observed evidence located by an actual field survey.

THE TJX COMPANIES, INC.
 11.968 AC.
 I.N. 201007230093946

9.223 AC
 THE NEW ALEANY COMPANY LLC
 9.718 AC.
 I.N. 201009240125375

STATE OF OHIO
 1.470 AC PARCEL 17WD
 I.N. 200504010059337

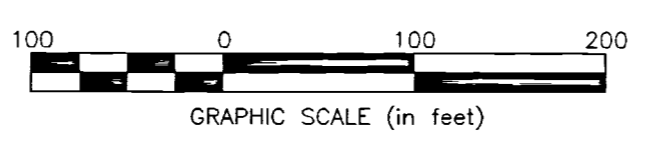
STATE OF OHIO
 1.008 AC PARCEL 8WD
 I.N. 200605180096906
 I.N. 200605050086197

YERKE REAL ESTATE INC.
 36.000 AC. (DEED)
 I.N. 200003080046398

WESTOVER COMMUNITIES INC.
 21.107 AC.
 I.N. 200611160229245

- = STONE FND.
- = MON. FND.
- = I.P. FND.
- = I.P. SET
- = MAG. NAIL FND.
- = MAG. NAIL SET
- ▲ = R.R. SPK. FND.
- △ = R.R. SPK. SET
- = P.K. NAIL FND.

I.P. Set are 13/16" I.D. iron pipe with cap inscribed EMHT INC



By Heather L. King 1/22/13
 Heather L. King Date
 Professional Surveyor No. 8307

JAN 22 2013
 Surveyor
 Heather L. King, P.E.

EMHT		Date: January 11, 2013
Evans, Mechwart, Hambleton & Tilton, Inc. Engineers • Surveyors • Planners • Scientists 5500 New Albany Road, Columbus, OH 43054 Phone: 614.775.4500 Toll Free: 888.775.3648 emht.com		Scale: 1" = 100'
		Job No: 2013-0038
		Sheet: 1 of 1
REVISIONS		
MARK	DATE	DESCRIPTION

N:\2013\0038\DWG\CAD\SETUP\BOUNDARY_20130038BNDY_01.DWG plotted by KMS, HEATHER on 1/22/2013 11:38:00 AM last saved by KING on 1/14/2013 6:15:27 PM