

SURVEY DATA:

BEARINGS BASED UPON THE OHIO STATE PLANE COORDINATE SYSTEM, SOUTH ZONE NAD83 (1995). SAID BEARINGS ORIGINATED FROM SAID COORDINATE SYSTEM BY GPS OBSERVATIONS OF SELECTED STATIONS IN THE NATIONAL GEODETIC SURVEY CONTINUOUSLY OPERATING REFERENCE STATION (NGS CORS) NETWORK. THE BEARING ON THE NORTH RIGHT OF WAY LINE OF EAST BROAD STREET, BEING N81°49'10"E, IS DESIGNATED THE 'BASIS OF BEARING' FOR THIS SURVEY.

REFERENCE DOCUMENTS:

INST NO 200506170118080

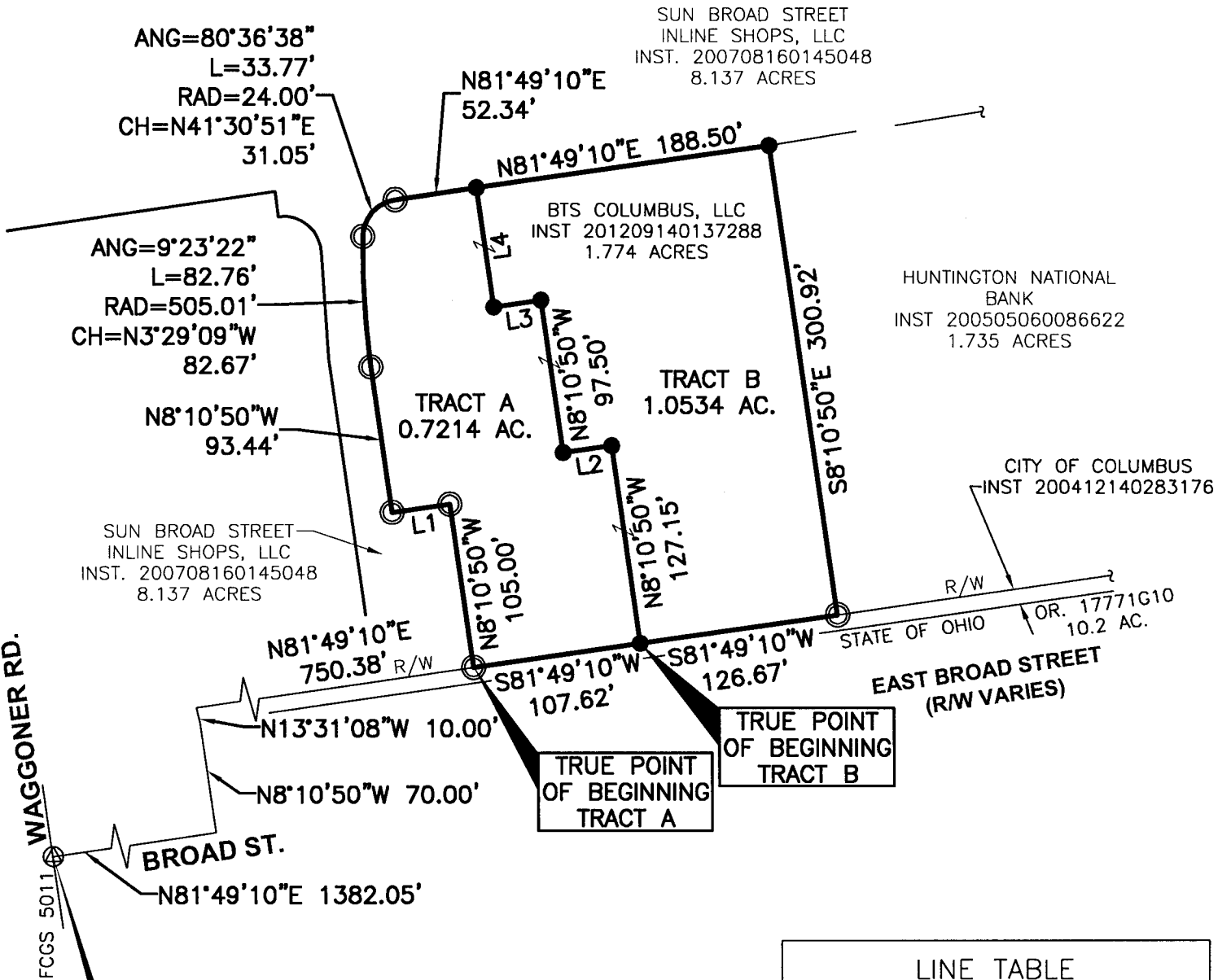
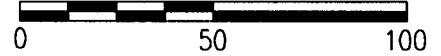
SURVEY NOTES:

IRON PINS SET ARE 5/8" REBAR, 30" IN LENGTH WITH A PLASTIC PLUG PLACED ON TOP INSCRIBED WITH THE NAME "WOOLPERT", UNLESS OTHERWISE NOTED HEREON.

PROPERTY CORNERS FOUND ARE IN GOOD CONDITION UNLESS OTHERWISE NOTED HEREON.



SCALE: 1"=100'



POINT OF COMMENCING

LEGEND

- ⊗ PK NAIL FOUND
- ⊙ 3/4" IRON PIN FOUND (EMHT CAP)
- 5/8" IRON PIN SET WITH ID CAP

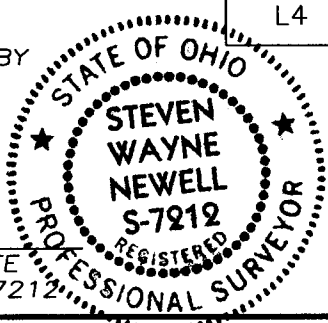
LINE TABLE		
LINE #	LENGTH	DIRECTION
L1	37.00	S81° 49' 10"W
L2	31.33	S81° 49' 10"W
L3	30.50	S81° 49' 10"W
L4	76.27	N8° 10' 50"W

CERTIFICATION:

THIS DRAWING BASED ON A SURVEY PERFORMED BY WOOLPERT, INC. IN NOVEMBER, 2011.

WOOLPERT, INC.

STEVEN W. NEWELL DATE 03/19/13
OHIO REGISTERED PROFESSIONAL SURVEYOR NO. 7212



RECEIVED

MAR 19 2013

Franklin County Engineer
Dean C. Ringle, P.E., P.S.

<p>WOOLPERT</p>	2780 AIRPORT DRIVE SUITE 100 COLUMBUS, OHIO 43219 TEL: 614.476.6000 FAX: 614.476.6225	<p>SURVEY EXHIBIT 1.7748 ACRE TRACT QTR. SEC. 4, TWP. 1, RANGE 16, U.S.M.L. CITY OF COLUMBUS, FRANKLIN COUNTY, OHIO</p>	PROJECT NO. 72120 DATE 03/05/12 DRT. JDH CKD. SWN SHT. # 1 of 1
------------------------	---------------------------------------------------------------------------------------------------	-----------------------------------------------------------------------------------------------------------------------------------------------------------------------------------------------------------	--------------------------------------------------------------------------------