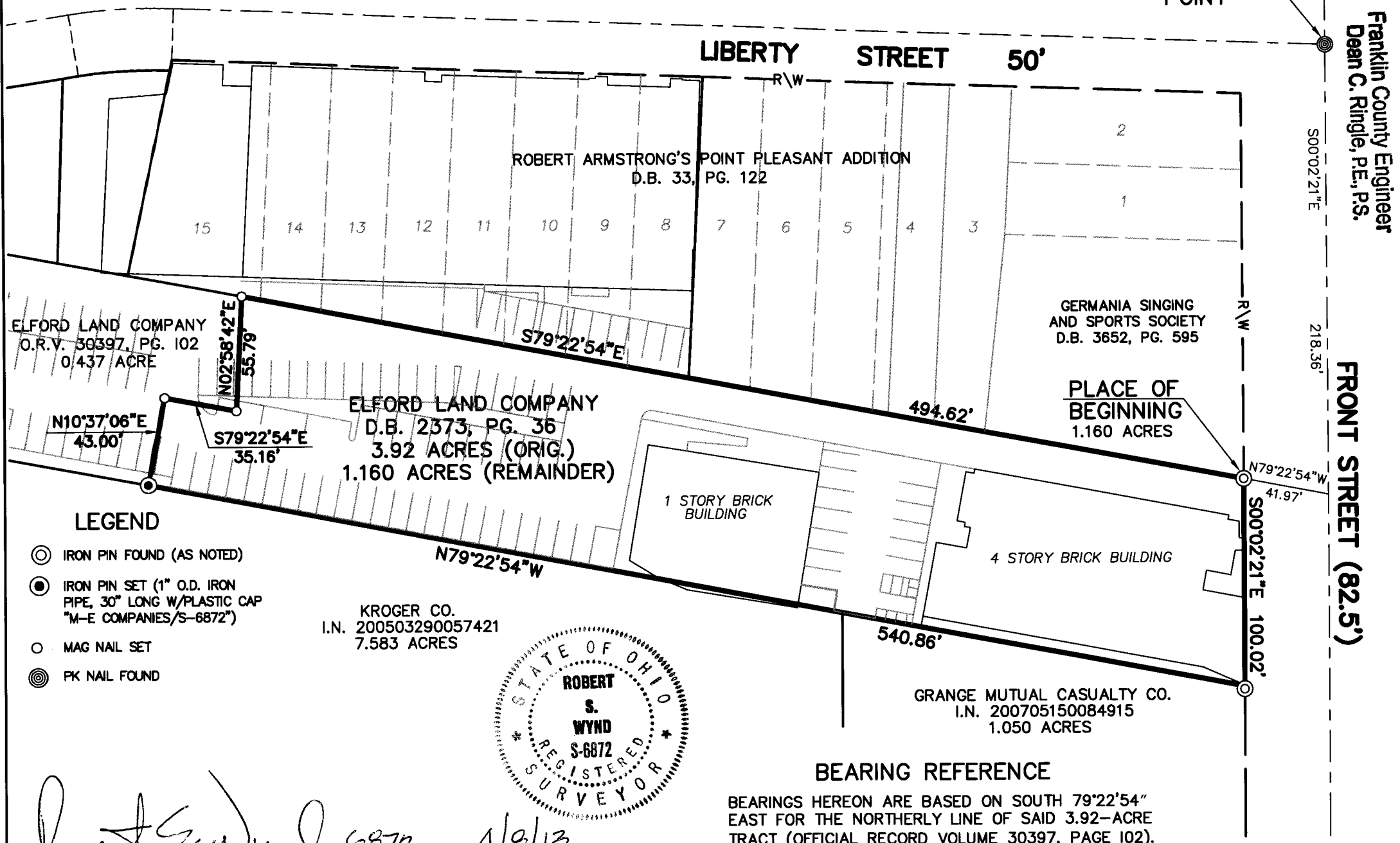


STATE OF OHIO, COUNTY OF FRANKLIN, CITY OF COLUMBUS  
SECTION 27, TOWNSHIP 5, RANGE 22 REFUGEE LANDS



REFERENCE POINT

LIBERTY STREET 50'

Franklin County Engineer  
Dean C. Ringle, P.E., P.S.

APR 09 2013

RECEIVED



635 Brookridge Boulevard  
Westerville, OH 43081  
Contact: Project Manager  
614-818-4900 ext. 777  
Fax: 614-818-4902  
www.mecompanies.com

PROPERTY SPLIT EXHIBIT  
ELFORD PROPERTY  
FRONT STREET  
COLUMBUS, OHIO

FRONT STREET (82.5')

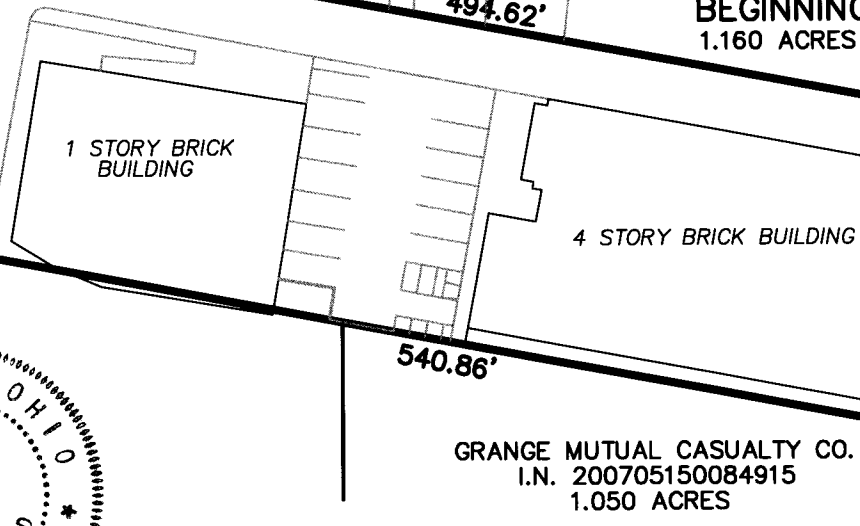
BECK STREET

ELFORD LAND COMPANY  
O.R.V. 30397, PG. 102  
0.437 ACRE

ELFORD LAND COMPANY  
D.B. 2373, PG. 36  
3.92 ACRES (ORIG.)  
1.160 ACRES (REMAINDER)

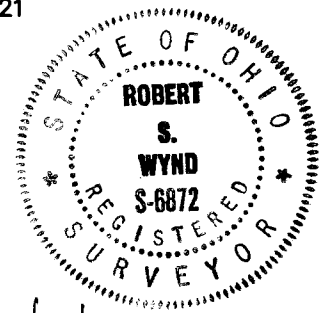
GERMANIA SINGING  
AND SPORTS SOCIETY  
D.B. 3652, PG. 595

PLACE OF  
BEGINNING  
1.160 ACRES



GRANGE MUTUAL CASUALTY CO.  
I.N. 200705150084915  
1.050 ACRES

KROGER CO.  
I.N. 200503290057421  
7.583 ACRES



BEARING REFERENCE

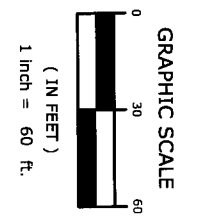
BEARINGS HEREON ARE BASED ON SOUTH 79°22'54" EAST FOR THE NORTHERLY LINE OF SAID 3.92-ACRE TRACT (OFFICIAL RECORD VOLUME 30397, PAGE 102).

LEGEND

- ⊙ IRON PIN FOUND (AS NOTED)
- IRON PIN SET (1" O.D. IRON PIPE, 30" LONG W/PLASTIC CAP "M-E COMPANIES/S-6872")
- MAG NAIL SET
- ⊙ PK NAIL FOUND

*Robert S. Wynd* 6872  
REGISTERED SURVEYOR NO.

4/8/13  
DATE



J:\13\13-060\dwg\SURVE\13060SPLT.dwg by: dchiese on 04/09/2013 08:13:07 am ~ for M-E Companies, Inc.