



Evans, Mechwart, Hambleton & Tilton, Inc.
 Engineers • Surveyors • Planners • Scientists
 5500 New Albany Road, Columbus, OH 43054
 Phone: 614.775.4500 Toll Free: 888.775.3648

emht.com

SURVEY OF ACREAGE PARCEL

QUARTER TOWNSHIP 3, TOWNSHIP 2, RANGE 16

UNITED STATES MILITARY LANDS

CITY OF COLUMBUS, COUNTY OF FRANKLIN, STATE OF OHIO

Date: March 21, 2013

Scale: 1" = 100'

Job No. 2012-1249

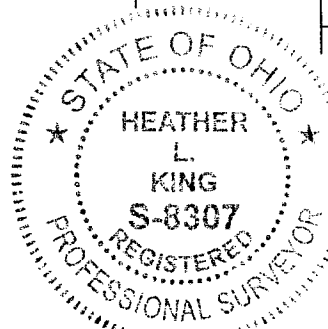
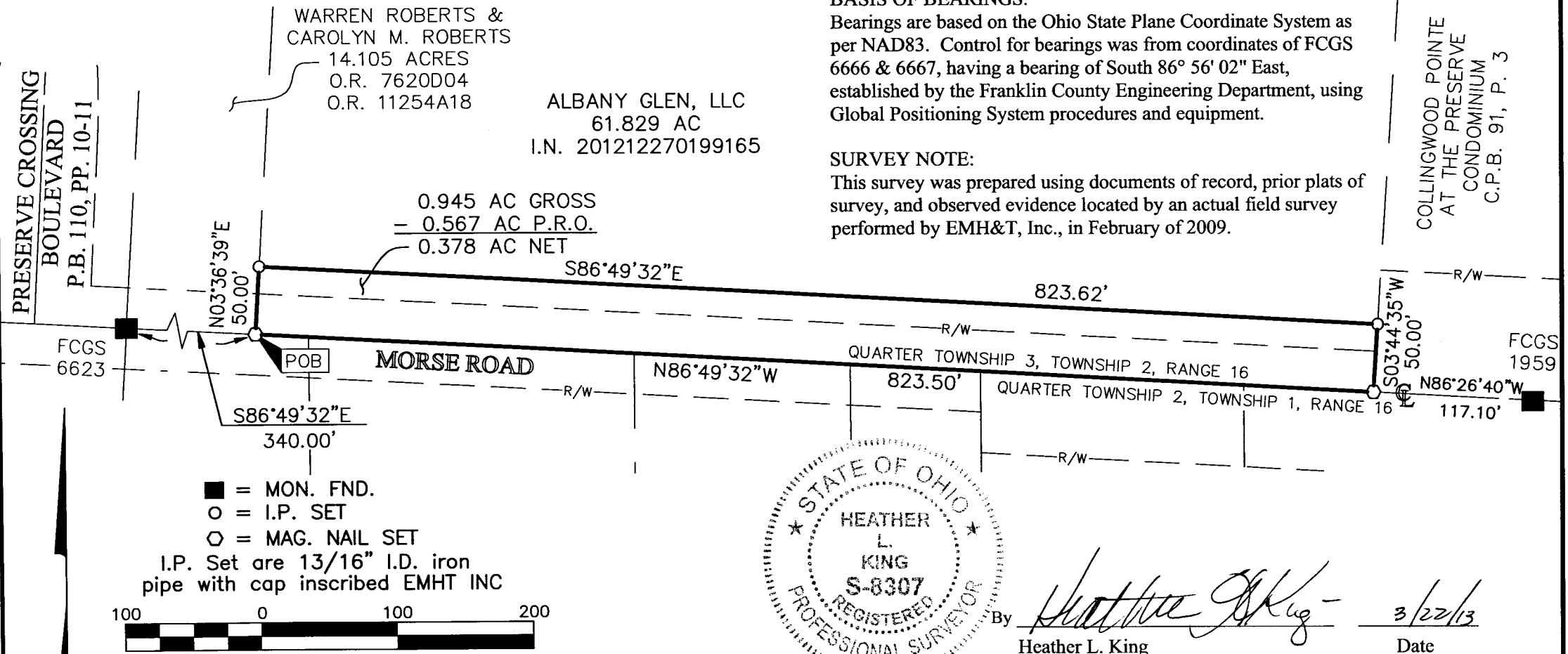
BASIS OF BEARINGS:

Bearings are based on the Ohio State Plane Coordinate System as per NAD83. Control for bearings was from coordinates of FCGS 6666 & 6667, having a bearing of South 86° 56' 02" East, established by the Franklin County Engineering Department, using Global Positioning System procedures and equipment.

SURVEY NOTE:

This survey was prepared using documents of record, prior plats of survey, and observed evidence located by an actual field survey performed by EMH&T, Inc., in February of 2009.

COLLINGWOOD POINTE
 AT THE PRESERVE
 CONDOMINIUM
 C.P.B. 91, P. 3



By Heather L. King 3/22/13
 Heather L. King Date
 Professional Surveyor No. 8307

RECEIVED

MAR 22 2013

Franklin County Engineer
 Dean C. Rinnle PE, PS

J:\20121249\DWG\04SHEETS\BOUNDARY\20121249-VS-BNDY_01.DWG plotted by KING, HEATHER on 3/22/2013 8:35:43 AM last saved by HKING on 3/22/2013 8:35:20 AM
 Xrefs: