



Evans, Mechwart, Hambleton & Tilton, Inc.
 Engineers • Surveyors • Planners • Scientists
 5500 New Albany Road, Columbus, OH 43054
 Phone: 614.775.4500 Toll Free: 888.775.3648

emht.com

SURVEY OF ACREAGE PARCEL

QUARTER TOWNSHIP 1, TOWNSHIP 2, RANGE 17

UNITED STATES MILITARY LANDS

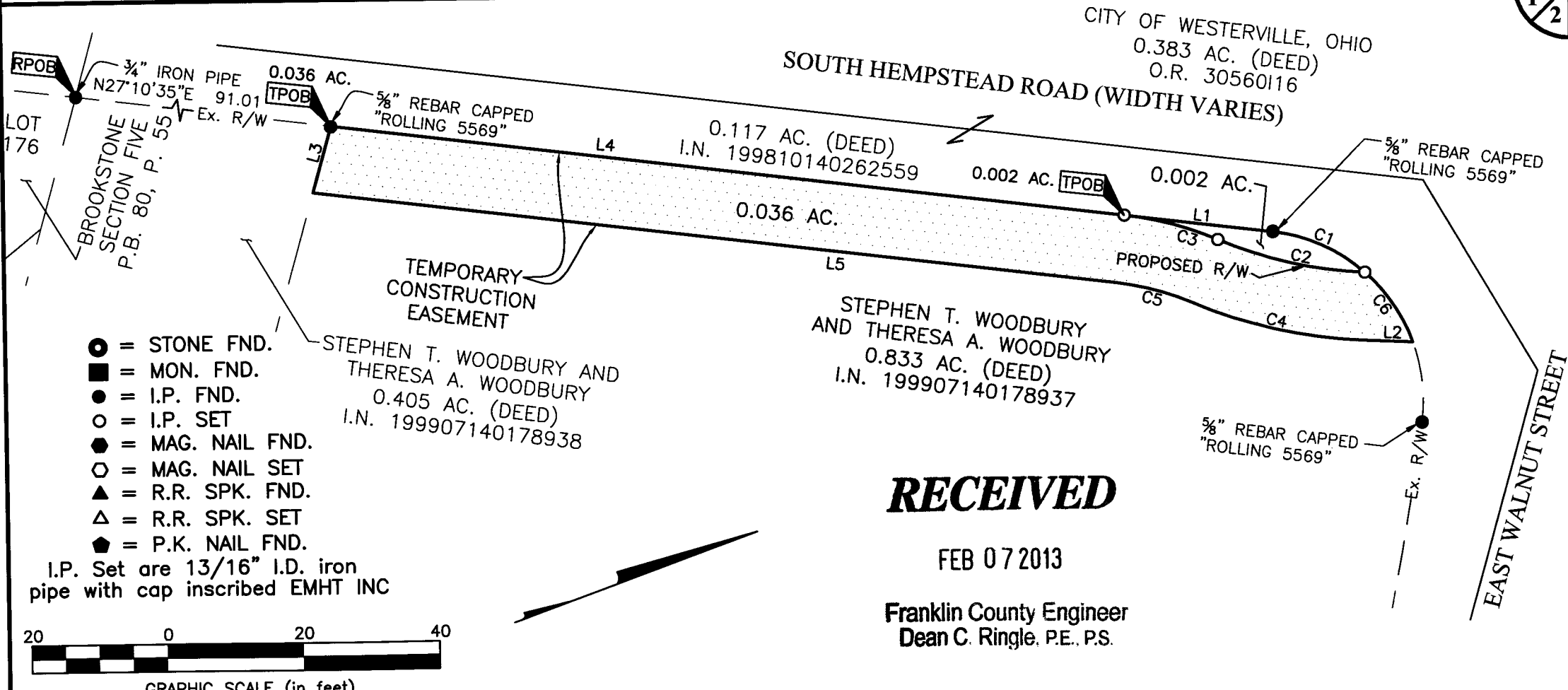
CITY OF WESTERVILLE, COUNTY OF FRANKLIN, STATE OF OHIO

Date: 02/01/2013

Scale: 1" = 20'

Job No. 2012-0480

1/2



- = STONE FND.
- = MON. FND.
- = I.P. FND.
- = I.P. SET
- = MAG. NAIL FND.
- = MAG. NAIL SET
- ▲ = R.R. SPK. FND.
- △ = R.R. SPK. SET
- ◆ = P.K. NAIL FND.

I.P. Set are 13/16" I.D. iron pipe with cap inscribed EMHT INC



GRAPHIC SCALE (in feet)

RECEIVED

FEB 07 2013

Franklin County Engineer
 Dean C. Ringle, P.E., P.S.



Evans, Mechwart, Hambleton & Tilton, Inc.
 Engineers • Surveyors • Planners • Scientists
 5500 New Albany Road, Columbus, OH 43054
 Phone: 614.775.4500 Toll Free: 888.775.3648

emht.com

SURVEY OF ACREAGE PARCEL

QUARTER TOWNSHIP 1, TOWNSHIP 2, RANGE 17

UNITED STATES MILITARY LANDS

CITY OF WESTERVILLE, COUNTY OF FRANKLIN, STATE OF OHIO

Date: 02/01/2013

Scale: 1" = N/A

Job No. 2012-0480

RECEIVED

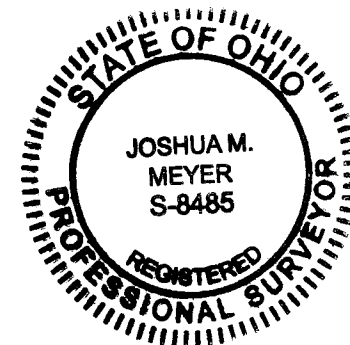
2/2

FEB 07 2013

Franklin County Engineer
 Dean C. Ringle, P.E., P.S.

Line Table		
Line Number	Length	Direction
L1	21.90'	N27°10'35"E
L2	7.44'	S22°48'29"W
L3	10.11'	N54°16'45"W
L4	116.80'	N27°10'35"E
L5	118.30'	S27°10'35"W

Curve Table					
Curve Number	Delta	Radius	Length	Chord Bearing	Chord Distance
C1	34°33'07"	25.00'	15.08'	N44°27'08"E	14.85'
C2	20°58'21"	61.00'	22.33'	N33°17'40"E	22.20'
C3	16°36'16"	49.00'	14.20'	N35°28'42"E	14.15'
C4	20°58'21"	71.00'	25.99'	S33°17'40"W	25.84'
C5	16°36'16"	39.00'	11.30'	S35°28'42"W	11.26'
C6	28°52'07"	25.00'	12.60'	N76°09'45"E	12.46'



BASIS OF BEARINGS:

The bearings shown on this plat are based on the Ohio State Plane Coordinate System, South Zone, NAD83 (NSRS2007). Said bearings originated from a field traverse which was tied (referenced) to said coordinate system by GPS observations and observations of selected Franklin County Geodetic Survey Monuments HOOVERAZIMUTH and HOOVER. The portion of the centerline of South Hempstead Road, having a bearing of North 27°10'35" East, is designated the "basis of bearing" for this survey.

SURVEY NOTE:

This survey was prepared using documents of record, prior plats of survey, and observed evidence located by an actual field survey.

By Joshua M. Meyer

Joshua M. Meyer
 Professional Surveyor No. 8485

2-1-2013

Date