

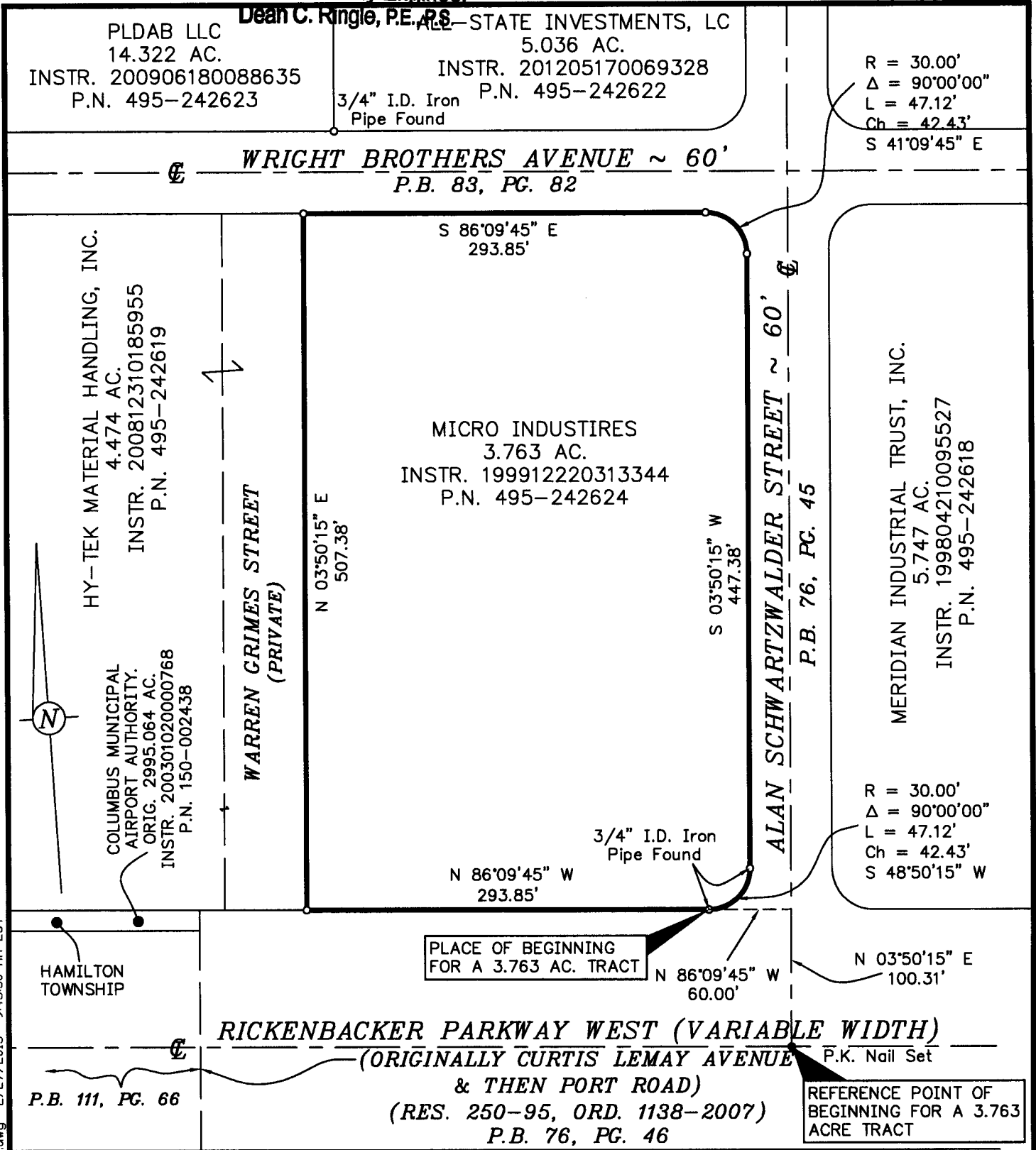
RECEIVED

MAR 01 2013

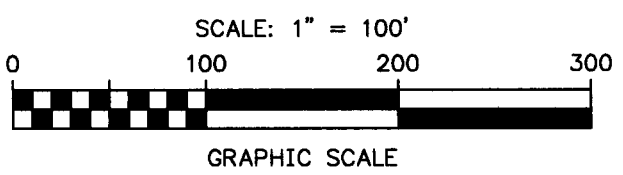
Franklin County Engineer

Dean C. Ringle, P.E., P.S.

H-9-C



Basis of bearings are based upon Grid Bearing of S 86° 16' 43" E, from Ohio Coordinate System, South Zone, NAD 83, as determined by field measurements between Franklin County Engineer Monuments No. 9929 and No. 2268.



3/4" I.D. Iron Pipe Set, 30" in length, w/Cap
Stamped "BIRD & BULL, INC." Unless Otherwise Shown.

**EXHIBIT OF A 3.763 ACRE TRACT,
AT 2270 RICKENBACKER PARKWAY WEST
CITY OF COLUMBUS, FRANKLIN CO., OHIO
(SEC. 1., T. 3 N., R. 22 W., CONGRESS LANDS)**

SCALE: 1" = 100'

C.F. BIRD & R.J. BULL, INC.
Engineers and Surveyors
2875 W. Dublin-Granville Road
Columbus, Ohio 43235
Ph: (614) 761-1661



MARCH 01, 2013
By *Kevin L. Baxter*
Kevin L. Baxter ~ Ohio Surveyor No. 7697

H:\Jobs\2013\004\ACAD\dwg\Survey\Exhibits\Kroger Distribution-Exh.dwg 2/27/2013 9:43:50 AM EST