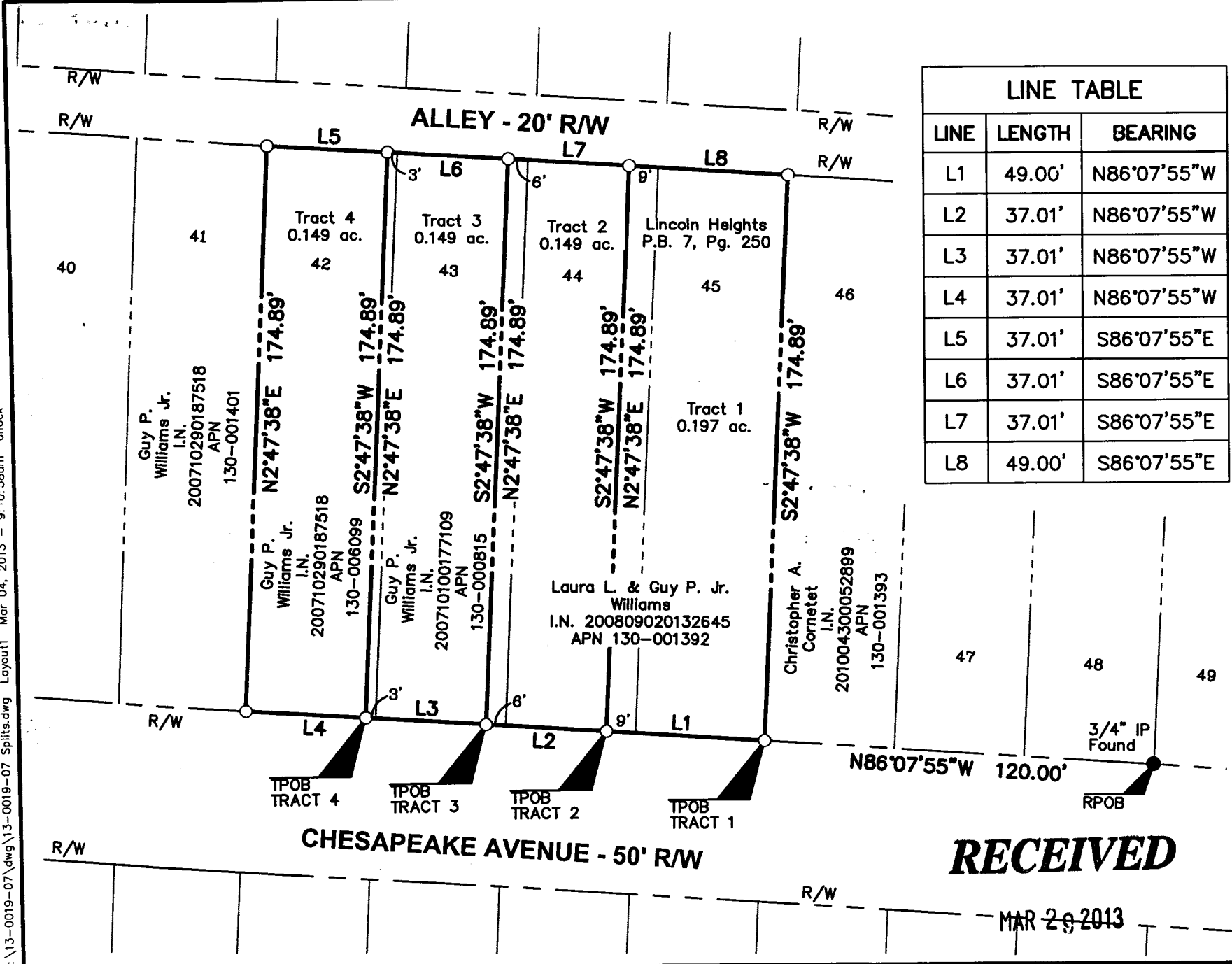
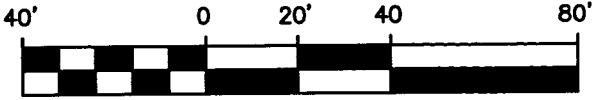


Z:\13-0019-07\dwg\13-0019-07 Splits.dwg Layout1 Mar 04, 2013 - 9:10:58am dhack



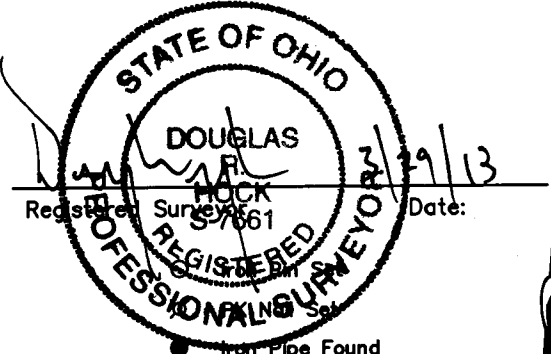
LINE TABLE		
LINE	LENGTH	BEARING
L1	49.00'	N86°07'55"W
L2	37.01'	N86°07'55"W
L3	37.01'	N86°07'55"W
L4	37.01'	N86°07'55"W
L5	37.01'	S86°07'55"E
L6	37.01'	S86°07'55"E
L7	37.01'	S86°07'55"E
L8	49.00'	S86°07'55"E



1" = 40'

Bearings are based on the Ohio State Plane Coordinate System NAD83 CORS86. A bearing of N 86° 07' 55" W was held for the right-of-way of Chesapeake Avenue in front of Lots 42-48 of Lincoln Heights recorded in Plat Book 7, Page 250.

Iron pins set are 3/4" diameter iron pipe, 30" long and capped Advanced 7661.



● Iron Pipe Found
 ✱ PK Nail Found

Lot Split Exhibit

Township of Clinton, Franklin County, Ohio
 Quarter Township 3, Township 1, Range 18
 United States Military District

DRAWN BY: DRH JOB NO.: 13-0019-07
 DATE: 02/28/2013 CHECKED BY: JCD

ADVANCED
 CIVIL DESIGN
 ENGINEERS SURVEYORS

422 Beecher Road
 Gahanna, Ohio 43230
 ph 614.428.7750
 fax 614.428.7755

RECEIVED

MAR 29 2013

Franklin County Engineer
 Dean C. Ringle, P.E., P.S.