

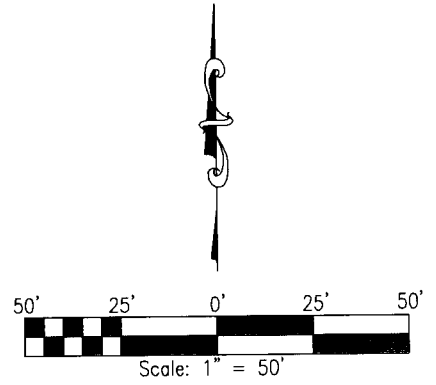
RECEIVED

FEB 20 2013

Franklin County Engineer
Dean C. Ringle, P.E., P.S.

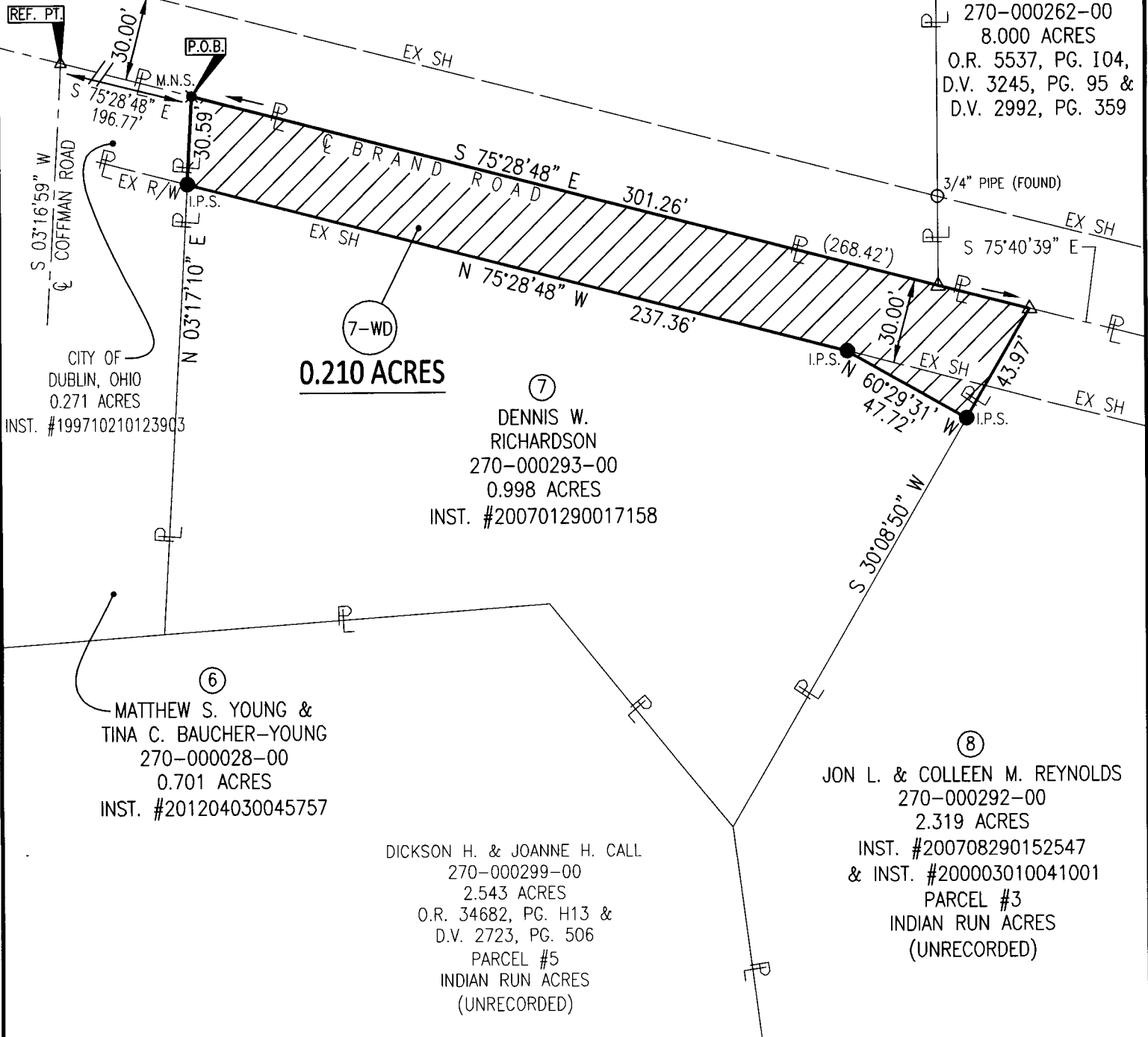
**EXHIBIT B
PARCEL 7-WD
BRAND ROAD / COFFMAN ROAD
ROUNDBABOUT**

CITY OF DUBLIN, FRANKLIN COUNTY, OHIO
V.M.S. 2543



②
CITY OF DUBLIN
270-000260-00
14.118 ACRES
INST. #201203160036653

③
JERRY GARLAND, III
& MARSHA M. SPEARS
270-000262-00
8.000 ACRES
O.R. 5537, PG. 104,
D.V. 3245, PG. 95 &
D.V. 2992, PG. 359



CITY OF DUBLIN, OHIO
0.271 ACRES
INST. #199710210123903

0.210 ACRES

⑦
DENNIS W. RICHARDSON
270-000293-00
0.998 ACRES
INST. #200701290017158

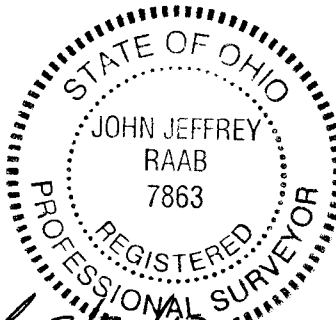
⑥
MATTHEW S. YOUNG &
TINA C. BAUCHER-YOUNG
270-000028-00
0.701 ACRES
INST. #201204030045757

DICKSON H. & JOANNE H. CALL
270-000299-00
2.543 ACRES
O.R. 34682, PG. H13 &
D.V. 2723, PG. 506
PARCEL #5
INDIAN RUN ACRES
(UNRECORDED)

⑧
JON L. & COLLEEN M. REYNOLDS
270-000292-00
2.319 ACRES
INST. #200708290152547
& INST. #200003010041001
PARCEL #3
INDIAN RUN ACRES
(UNRECORDED)



Pride in the Details. Passion in our People.
355 E. CAMPUS VIEW BLVD
COLUMBUS, OH 43235
(614) 847-4670



John Jeffrey Raab
JOHN JEFFREY RAAB, P.S. 7863

DATE 2/20/13

LEGEND:

- △ RAILROAD SPIKE FOUND
- IRON MONUMENT FOUND
- I.P.S. 3/4" I.D. PIPE SET W/CAP STAMPED "W.E. STILSON"
- M.N.S. MAGNAIL SET

BASIS OF BEARINGS:

THE BEARINGS FOR THIS SURVEY ARE BASED ON THE BEARING BETWEEN FRANKLIN COUNTY ENGINEER'S STATIONS "MCNEAL" AND "FCGS 6648" BEING S 15°07'52" E, AS MEASURED USING GPS METHODS AND THE OHIO STATE PLANE COORDINATE SYSTEM, SOUTH ZONE, NAD 83 (1986 ADJUSTMENT).