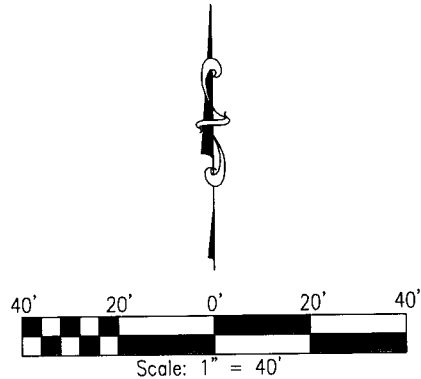


**EXHIBIT B
PARCEL 6-WD
BRAND ROAD / COFFMAN ROAD
ROUNDBABOUT**

TOWNSHIP OF WASHINGTON, FRANKLIN COUNTY, OHIO
V.M.S. 2543

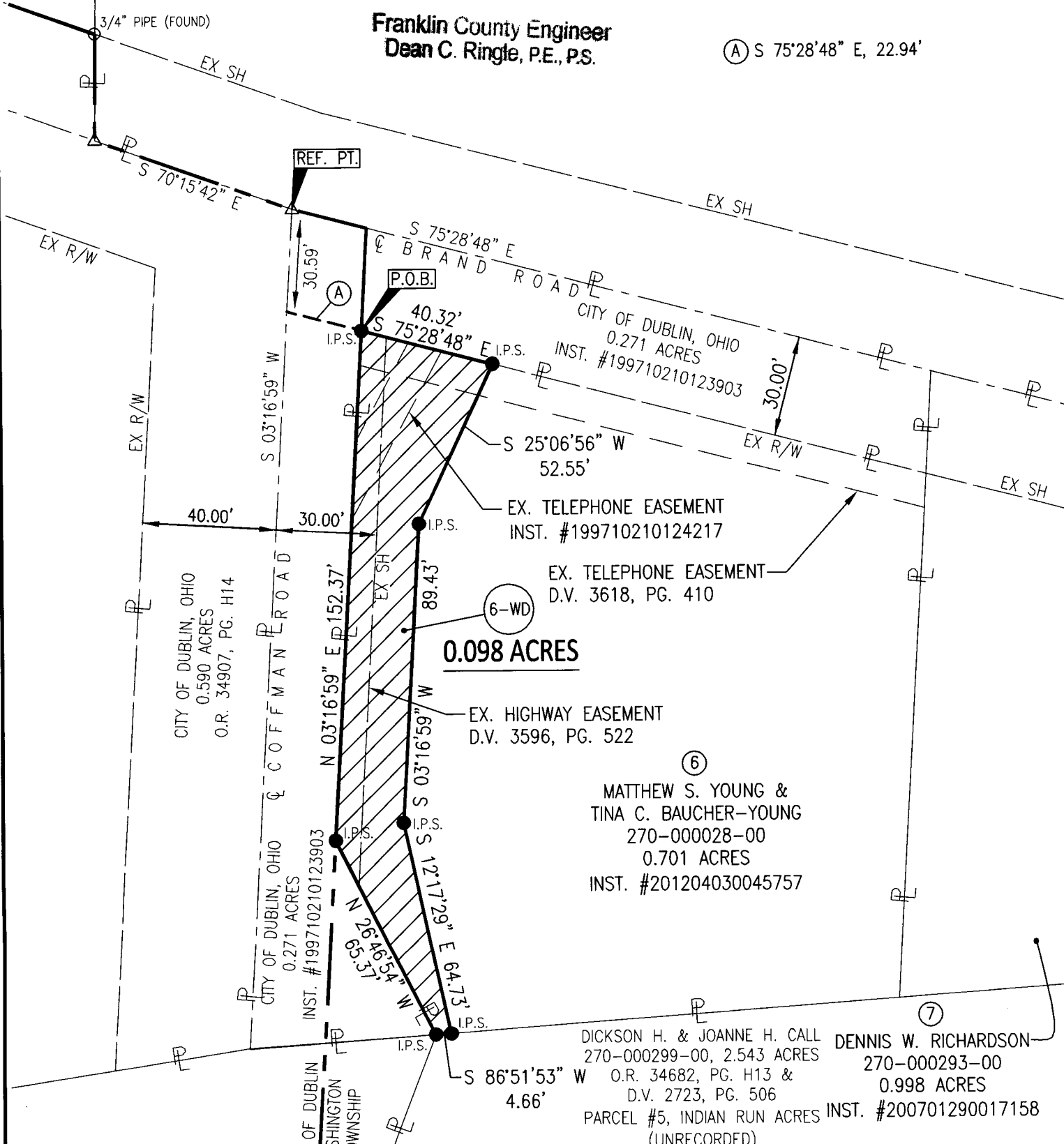


RECEIVED

FEB 20 2013

**Franklin County Engineer
Dean C. Ringle, P.E., P.S.**

Ⓐ S 75°28'48" E, 22.94'



Ⓒ
MATTHEW S. YOUNG &
TINA C. BAUCHER-YOUNG
270-000028-00
0.701 ACRES
INST. #201204030045757

DICKSON H. & JOANNE H. CALL
270-000299-00, 2.543 ACRES
O.R. 34682, PG. H13 &
D.V. 2723, PG. 506
PARCEL #5, INDIAN RUN ACRES
(UNRECORDED)

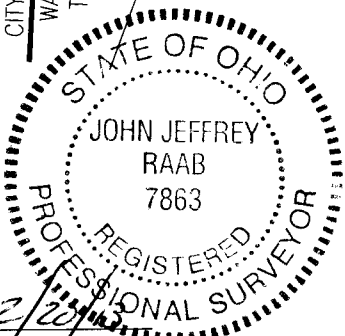
Ⓓ DENNIS W. RICHARDSON
270-000293-00
0.998 ACRES
INST. #200701290017158

- LEGEND:**
- △ RAILROAD SPIKE FOUND
 - IRON MONUMENT FOUND
 - I.P.S. 3/4" I.D. PIPE SET W/CAP STAMPED "W.E. STILSON"

BASIS OF BEARINGS:
THE BEARINGS FOR THIS SURVEY ARE BASED ON THE BEARING BETWEEN FRANKLIN COUNTY ENGINEER'S STATIONS "MCNEAL" AND "FCGS 6648" BEING S 15°07'52" E, AS MEASURED USING GPS METHODS AND THE OHIO STATE PLANE COORDINATE SYSTEM, SOUTH ZONE, NAD 83 (1986 ADJUSTMENT).



W.E. STILSON
CONSULTING GROUP
Pride in the Details. Passion in our People.
355 E. CAMPUS VIEW BLVD
COLUMBUS, OH 43235
(614) 847-4670



John Jeffrey Raab
JOHN JEFFREY RAAB, P.S. 7863 DATE 2/20/13