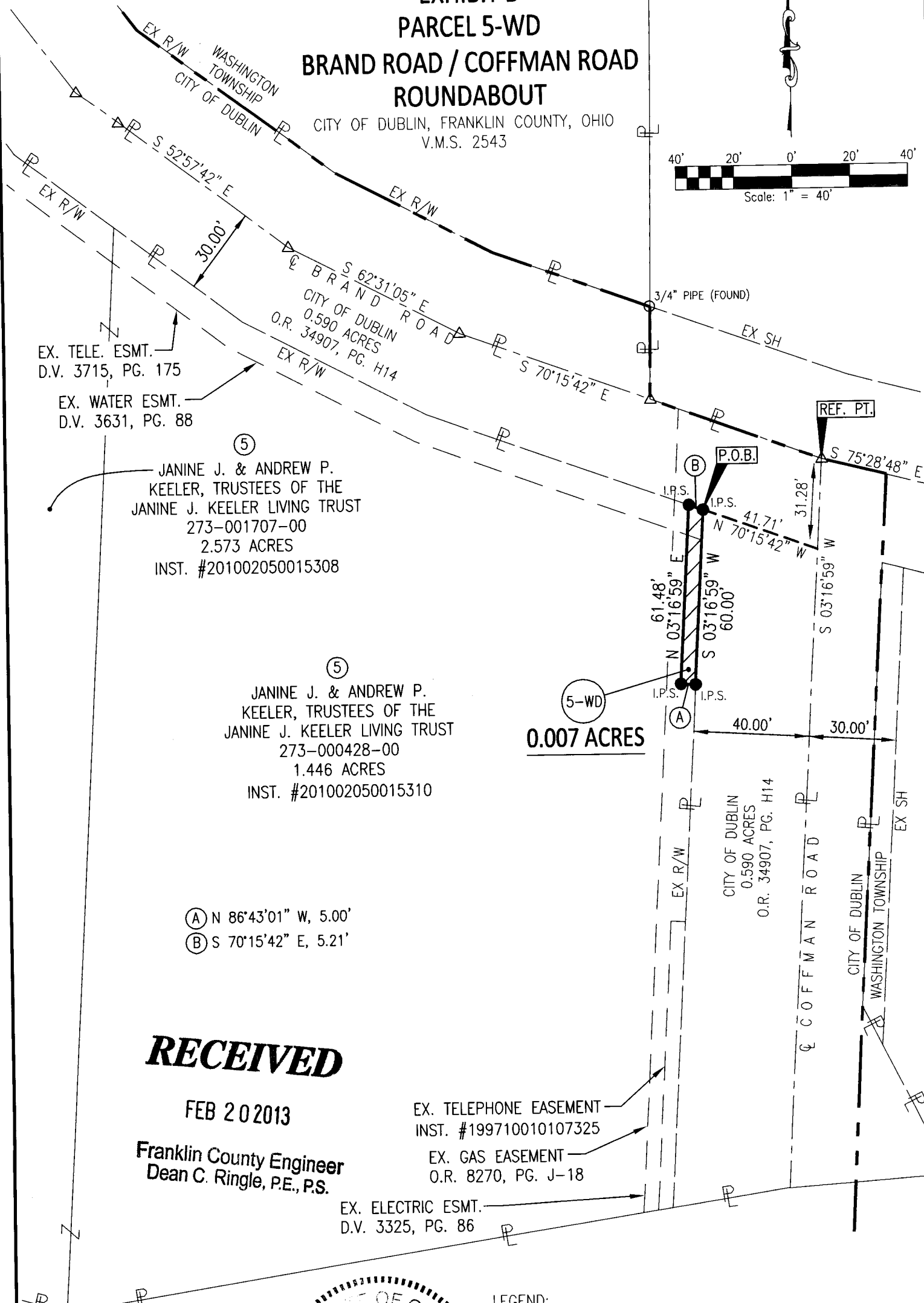
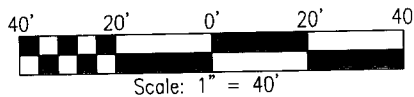


**EXHIBIT B
PARCEL 5-WD
BRAND ROAD / COFFMAN ROAD
ROUNDBABOUT**

CITY OF DUBLIN, FRANKLIN COUNTY, OHIO
V.M.S. 2543



RECEIVED

FEB 20 2013

Franklin County Engineer
Dean C. Ringle, P.E., P.S.

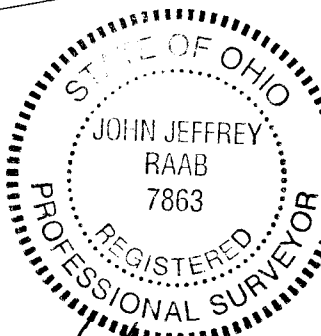
EX. TELEPHONE EASEMENT
INST. #199710010107325

EX. GAS EASEMENT
O.R. 8270, PG. J-18

EX. ELECTRIC ESMT.
D.V. 3325, PG. 86



Pride in the Details. Passion in our People.
355 E. CAMPUS VIEW BLVD
COLUMBUS, OH 43235
(614) 847-4670



- LEGEND:**
- △ RAILROAD SPIKE FOUND
 - IRON MONUMENT FOUND
 - I.P.S. 3/4" I.D. PIPE SET W/CAP STAMPED "W.E. STILSON"

BASIS OF BEARINGS:
THE BEARINGS FOR THIS SURVEY ARE BASED ON THE BEARING BETWEEN FRANKLIN COUNTY ENGINEER'S STATIONS "MCNEAL" AND "FCGS 6648" BEING S 15°07'52" E, AS MEASURED USING GPS METHODS AND THE OHIO STATE PLANE COORDINATE SYSTEM, SOUTH ZONE, NAD 83 (1986 ADJUSTMENT).

John Jeffrey Raab 2/20/13
JOHN JEFFREY RAAB, P.S. 7863 DATE