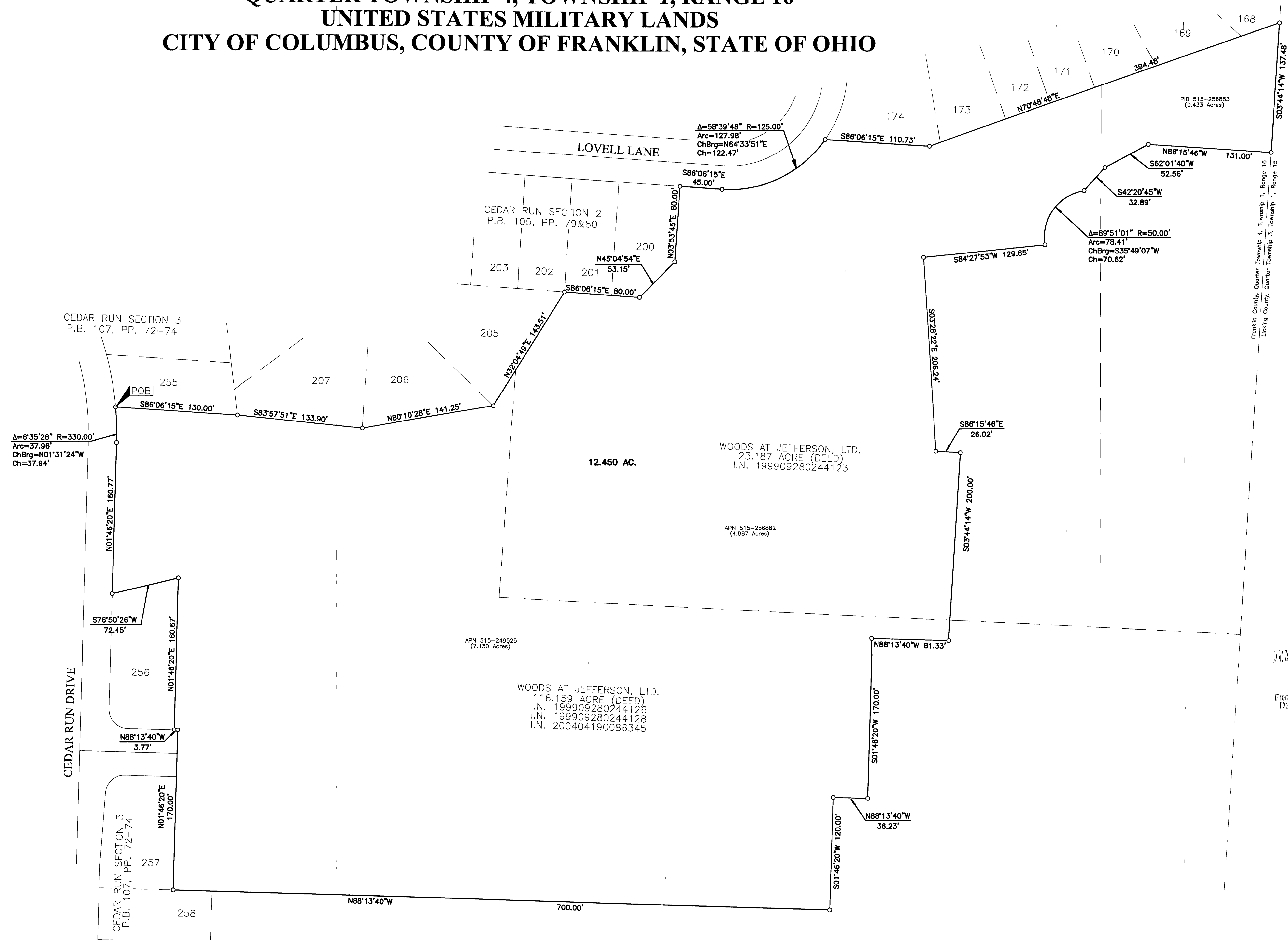


CEDAR RUN SECTION 4 PART 2

QUARTER TOWNSHIP 4, TOWNSHIP 1, RANGE 16

UNITED STATES MILITARY LANDS

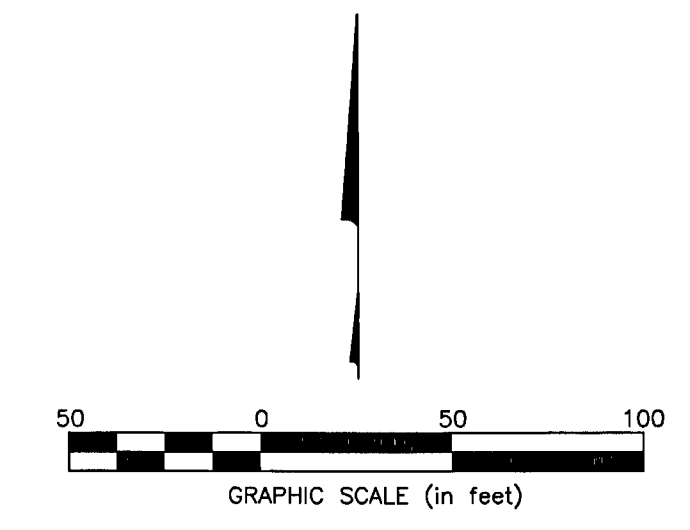
CITY OF COLUMBUS, COUNTY OF FRANKLIN, STATE OF OHIO



MARK ALLEN PARRISH
48.49 ACRES (DEED)
V. 788 P. 32

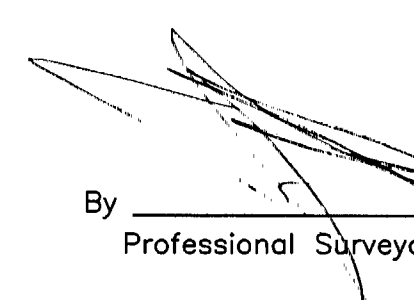
SURVEY DATA:
BASIS OF BEARINGS: The bearings shown on this plat were transferred from a field traverse originating from and tying to Franklin County Survey Control Monuments, including F.C.G.S. 1515 and F.C.G.S. 1572 and are based on the Ohio State Plane Coordinate System, South Zone as per NAD 83, 1986 adjustment, having a calculated bearing of South 86°06'15" East.

SURVEY NOTE:
This survey was prepared using documents of record, prior plats of survey, and observed evidence located by an actual field survey performed by EMHT in January 2003.



RECEIVED
FEB 05 2013
Franklin County Engineer
Duan C. Ringle, P.E., P.S.

- = MON. FND.
- = I.P. FND.
- = I.P. SET
- = MAG. NAIL FND.
- = MAG. NAIL SET
- ▲ = R.R. SPK. FND.
- △ = R.R. SPK. SET
- = P.K. NAIL FND.
- = P.K. NAIL SET
- I.P. Set are 13/16" I.D. iron pipe with cap inscribed EMHT INC

By  Professional Surveyor No. 8250

STATE OF OHIO
EDWARD J. MILLER
Professional Surveyor No. 8250
Date: 1/30/2013

EMHT		Date: January 30, 2013
Evans, Mechwart, Hambleton & Tilton, Inc. Engineers • Surveyors • Planners • Scientists 5500 New Albany Road, Columbus, OH 43054 Phone: 614.775.4500 Toll Free: 888.775.3648 emht.com		Scale: 1" = 50'
		Job No: 20111565
		Sheet: 1 of 1
REVISIONS		
MARK	DATE	DESCRIPTION

WOODS AT JEFFERSON, LTD.
I.N. 199909280244126
I.N. 199909280244128
I.N. 200404190086345

D:\20111565\DWG\CAD\DWG\20111565-8007.DWG plotted by JAMSTON on 2/4/2013 4:29:06 PM last saved by JAMSTON on 1/31/2013 12:31:14 PM XREF: