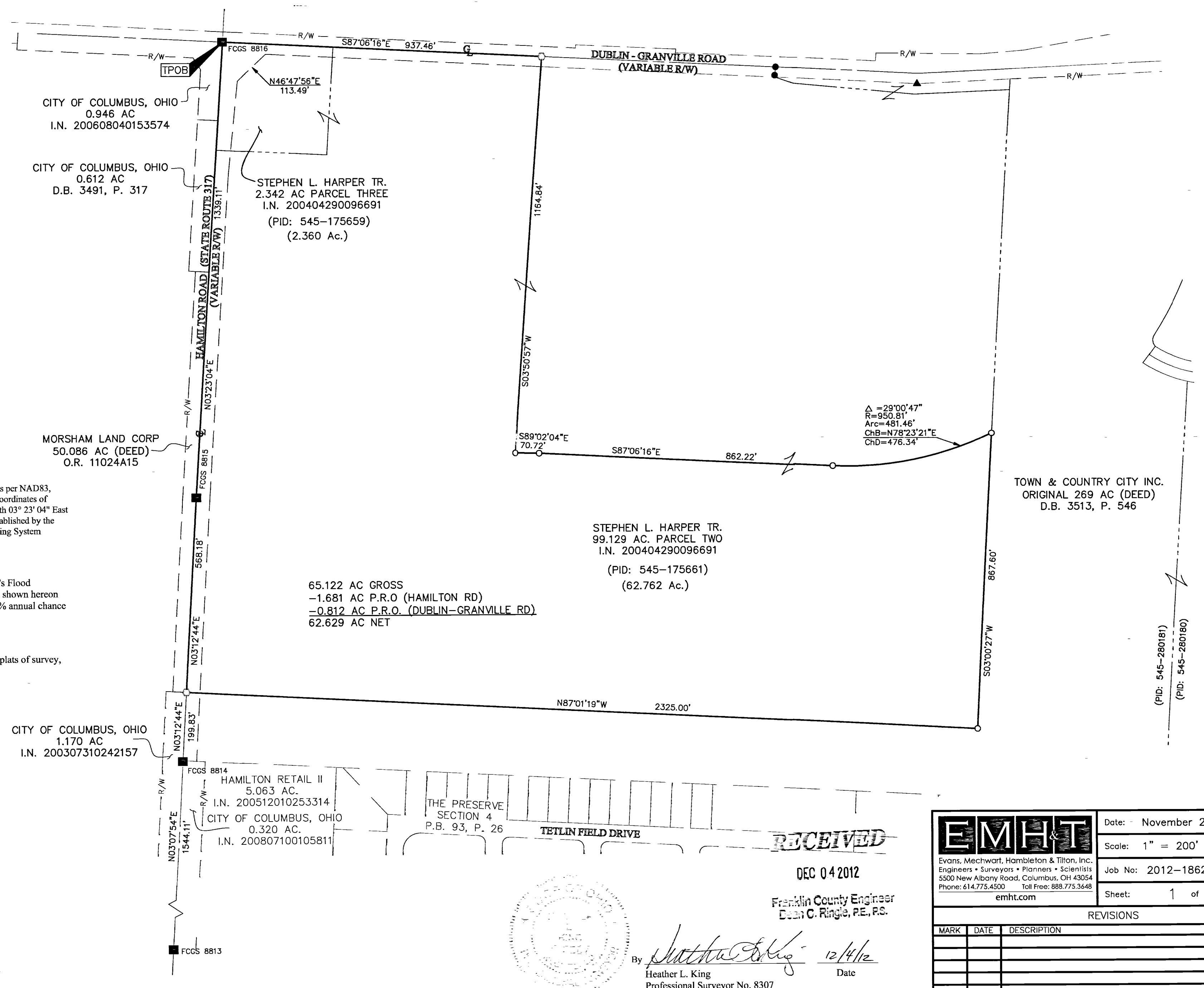


# SURVEY OF ACREAGE PARCELS

## QUARTER TOWNSHIP 3, TOWNSHIP 2, RANGE 16

### UNITED STATES MILITARY LANDS

### CITY OF COLUMBUS, COUNTY OF FRANKLIN, STATE OF OHIO



**BASIS OF BEARINGS:**  
 Bearings are based on the Ohio State Plane Coordinate System as per NAD83, South Zone (1986 Adjustment). Control for bearings was from coordinates of monuments FCGS 8815 & FCGS 8816, having a bearing of North 03° 23' 04" East for a portion of the centerline of Hamilton Road (Relocated), established by the Franklin County Engineering Department, using Global Positioning System procedures and equipment.

**FEMA NOTE:**  
 According to the Federal Emergency Management Agency's Flood Insurance Rate map (dated June 17, 2008), the subject tract shown hereon lies within Zone X (areas determined to be outside of the 2% annual chance floodplain), Community Panel No. 39049C0203K.

**SURVEY NOTE:**  
 This survey was prepared using documents of record, prior plats of survey, and observed evidence located by an actual field survey.

**Legend:**

- = STONE FND.
- = MON. FND.
- = I.P. FND.
- = I.P. SET
- = MAG. NAIL FND.
- = MAG. NAIL SET
- ▲ = R.R. SPK. FND.
- △ = R.R. SPK. SET
- ◆ = P.K. NAIL FND.

I.P. Set are 13/16" I.D. iron pipe with cap inscribed EMHT INC

**GRAPHIC SCALE (in feet)**

**RECEIVED**

DEC 04 2012

Franklin County Engineer  
 Dean C. Ringle, P.E., P.S.

By *Heather L. King* 12/4/12  
 Heather L. King Professional Surveyor No. 8307 Date

<b>EMHT</b> Evans, Mechwart, Hambleton & Tilton, Inc. Engineers • Surveyors • Planners • Scientists 5500 New Albany Road, Columbus, OH 43054 Phone: 614.775.4500 Toll Free: 888.775.3648 emht.com		Date: November 29, 2012
		Scale: 1" = 200'
		Job No: 2012-1862
		Sheet: 1 of 1
REVISIONS		
MARK	DATE	DESCRIPTION

J:\2012\1862\20121862\DWG\20121862BNDY\_01.DWG plotted by KING, HEATHER on 12/4/2012 8:14:50 AM  
 J:\2012\1862\20121862\DWG\20121862BNDY\_01.DWG printed by KING, HEATHER on 12/4/2012 8:16:58 AM last saved by KING, HEATHER on 12/4/2012 8:16:58 AM