

SURVEY OF ACREAGE PARCELS

RECEIVED

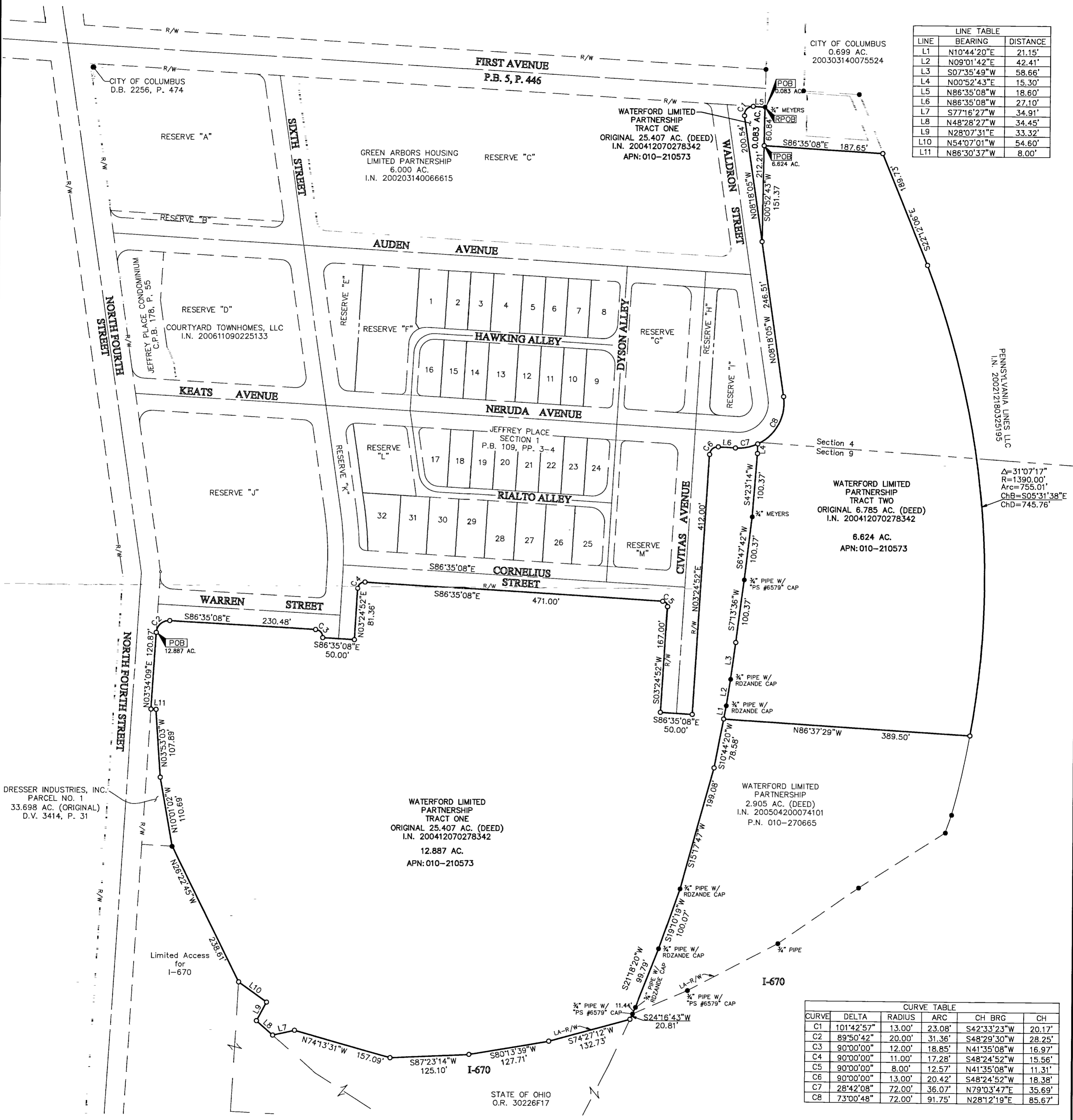
SECTIONS 4 AND 9, TOWNSHIP 5, RANGE 22

NOV 27 2012

REFUGEE LANDS

Franklin County Engineer
Dean C. Ringo, P.E., P.S.

CITY OF COLUMBUS, COUNTY OF FRANKLIN, STATE OF OHIO



LINE	BEARING	DISTANCE
L1	N10°44'20"E	21.15'
L2	N09°01'42"E	42.41'
L3	S07°35'49"W	58.66'
L4	N00°52'43"E	15.30'
L5	N86°35'08"W	18.60'
L6	N86°35'08"W	27.10'
L7	S77°16'27"W	34.91'
L8	N48°28'27"W	34.45'
L9	N28°07'31"E	33.32'
L10	N54°07'01"W	54.60'
L11	N86°30'37"W	8.00'

CURVE	DELTA	RADIUS	ARC	CH BRG	CH
C1	101°42'57"	13.00'	23.08'	S42°33'23"W	20.17'
C2	89°50'42"	20.00'	31.36'	S48°29'30"W	28.25'
C3	90°00'00"	12.00'	18.85'	N41°35'08"W	16.97'
C4	90°00'00"	11.00'	17.28'	S48°24'52"W	15.56'
C5	90°00'00"	8.00'	12.57'	N41°35'08"W	11.31'
C6	90°00'00"	13.00'	20.42'	S48°24'52"W	18.38'
C7	28°42'08"	72.00'	36.07'	N79°03'47"E	35.69'
C8	73°00'48"	72.00'	91.75'	N28°12'19"E	85.67'

- = STONE FND.
- = MON. FND.
- = I.P. FND.
- = I.P. SET
- = MAG. NAIL FND.
- = MAG. NAIL SET
- ▲ = R.R. SPK. FND.
- ▲ = R.R. SPK. SET
- ◆ = P.K. NAIL FND.
- ◆ = P.K. NAIL SET

I.P. Set are 13/16" I.D. iron pipe with cap inscribed EMHT INC

GRAPHIC SCALE (in feet)

SURVEY NOTE:
Occupation, in general fits survey.

SURVEY NOTE:
This survey was prepared using documents of record, prior plats of survey, and observed evidence located by an actual field survey.

BASIS OF BEARINGS:
Bearings are based on the same meridian as the bearings shown on the subdivision plat entitled "Jeffrey Place Section 1", of record in Plat Book 109, Pages 3 and 4, Recorder's Office, Franklin County, Ohio, in which a portion of the centerline of Cornelius Street has a bearing of South 86°35'08" East.

By Edward J. Miller
Professional Surveyor No. 8250

Date 2/4/12

Evans, Mechwart, Hambleton & Tilton, Inc.
Engineers • Surveyors • Planners • Scientists
5500 New Albany Road, Columbus, OH 43054
Phone: 614.775.4500 Toll Free: 888.775.3648
emht.com

Date: February 8, 2012
Scale: 1" = 100'
Job No: 2012-0292
Sheet: 1 of 1

MARK	DATE	DESCRIPTION

REVISIONS

2/10/2012 2:02:25 PM I-670 Survey by KING, HEATHER on 2/10/2012 5:45:02 PM
 2/10/2012 2:02:25 PM I-670 Survey by KING, HEATHER on 2/10/2012 5:45:02 PM