

SAWMILL PARTNERS
INVESTMENT CO. NO. II
273-008385
8.773 AC.
O.R. 7883-E06

EXHIBIT B



60' ACCESS EASEMENT
I.N. 200501240013629

TRAFFIC SIGNAL EASEMENT
I.N. 200612140247975

SAWMILL HARD CENTER LLC
273-011339
9.985 AC.
I.N. 200503220052696

SAWMILL HARD CENTER LLC
273-011340
18.052 AC.
I.N. 200507190142118

Summer Drive
P.B. 59, Pg. 39

NUMBER	DIRECTION	DISTANCE
L1	N 02°34'54" E	88.50 FEET
L2	N 87°25'06" W	67.50 FEET
L3	S 47°34'56" W	29.70 FEET
L4	N 87°25'06" W	19.00 FEET
L5	S 87°25'06" E	25.00 FEET
L6	S 02°34'54" W	19.02 FEET
L7	S 87°25'06" E	15.00 FEET

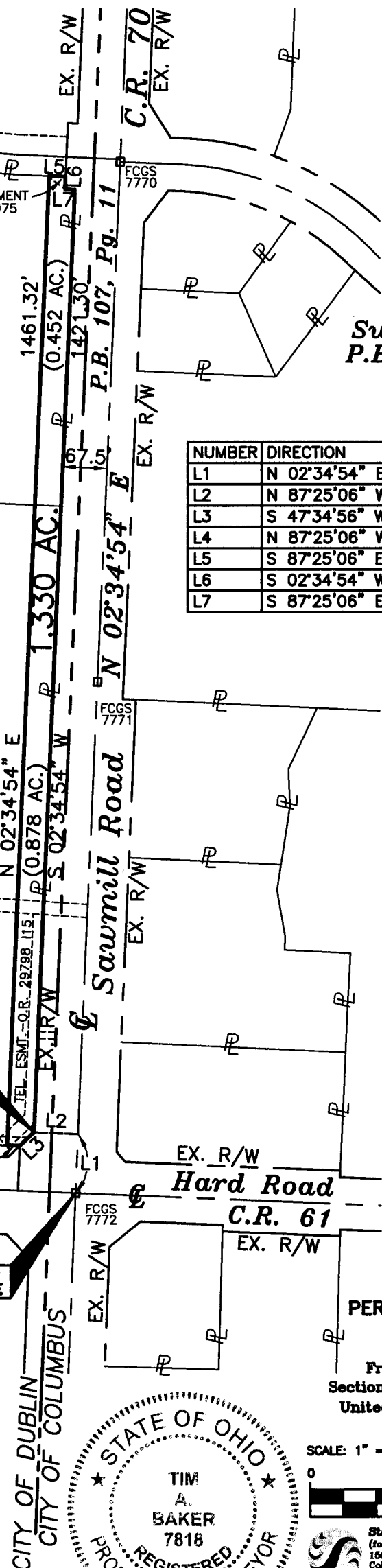
POLE LINE EASEMENT
D.B. 1127, PG. 449

30' UTILITY EASEMENT - P.B. 78, PG. 11
EX. R/W
Hard Road
P.B. 78, Pg. 11
EX. R/W

POINT OF TRUE BEGINNING

BEGIN FOR REFERENCE

3/4"D x 30"L IRON PIN SET
WITH CAP MARKED STANTEC



RECEIVED

DEC 07 2012

Franklin County Engineer
Dean C. Ringle, P.E., P.S.

PARCEL 1-PE
1.330 ACRES
PERPETUAL EASEMENT
SAWMILL ROAD
City of Dublin,
Franklin County, Ohio
Section 2, Twp. 2N, Range 19W
United States Military Lands



Stantec Consulting Services, Inc.
(formerly R.D. Zande & Associates, Inc.)
1500 Lake Shore Drive, Suite 100
Columbus, Ohio 43204
Phone: (614) 486-4888

Tim Baker 12-5-12
Registered Surveyor #7818 Date

BASIS OF BEARINGS
THE BEARING DATUM IS BASED ON THE BEARING OF NORTH 02°34'54" EAST FOR THE CENTERLINE OF SAWMILL ROAD FROM G.P.S. OBSERVATIONS BETWEEN FRANKLIN COUNTY MONUMENTS 7222 AND 7221 BASED ON THE OHIO STATE PLANE COORDINATE SYSTEM, SOUTH ZONE, NORTH AMERICAN DATUM 1983. (86)

BAKE2 V:\7427D\Documents\LEGAL_DESC\1-PE.dwg DEC 04, 2012