

COMPASS SURVEYING SOLUTIONS

ORDER NO.: 0966-12 DEC. 19, 2012

P.O. Box 1902
Westerville, Ohio 43086-1902
(614) 378-9140, fax: (614) 891-5889
CompassSurveying@yahoo.com

BOUNDARY SURVEY OF 2.9713 ACRES OF LAND AT THE NORTHWESTERLY CORNER OF FISHER ROAD AND HADLEY DRIVE IN COLUMBUS, OHIO

Situated in the State of Ohio, County of Franklin, City of Columbus being a part of Virginia Military Survey Nos. 7325 and 3316.

All recorded documents denoted on this plat are of record in the Recorder's Office, Franklin County, Ohio.

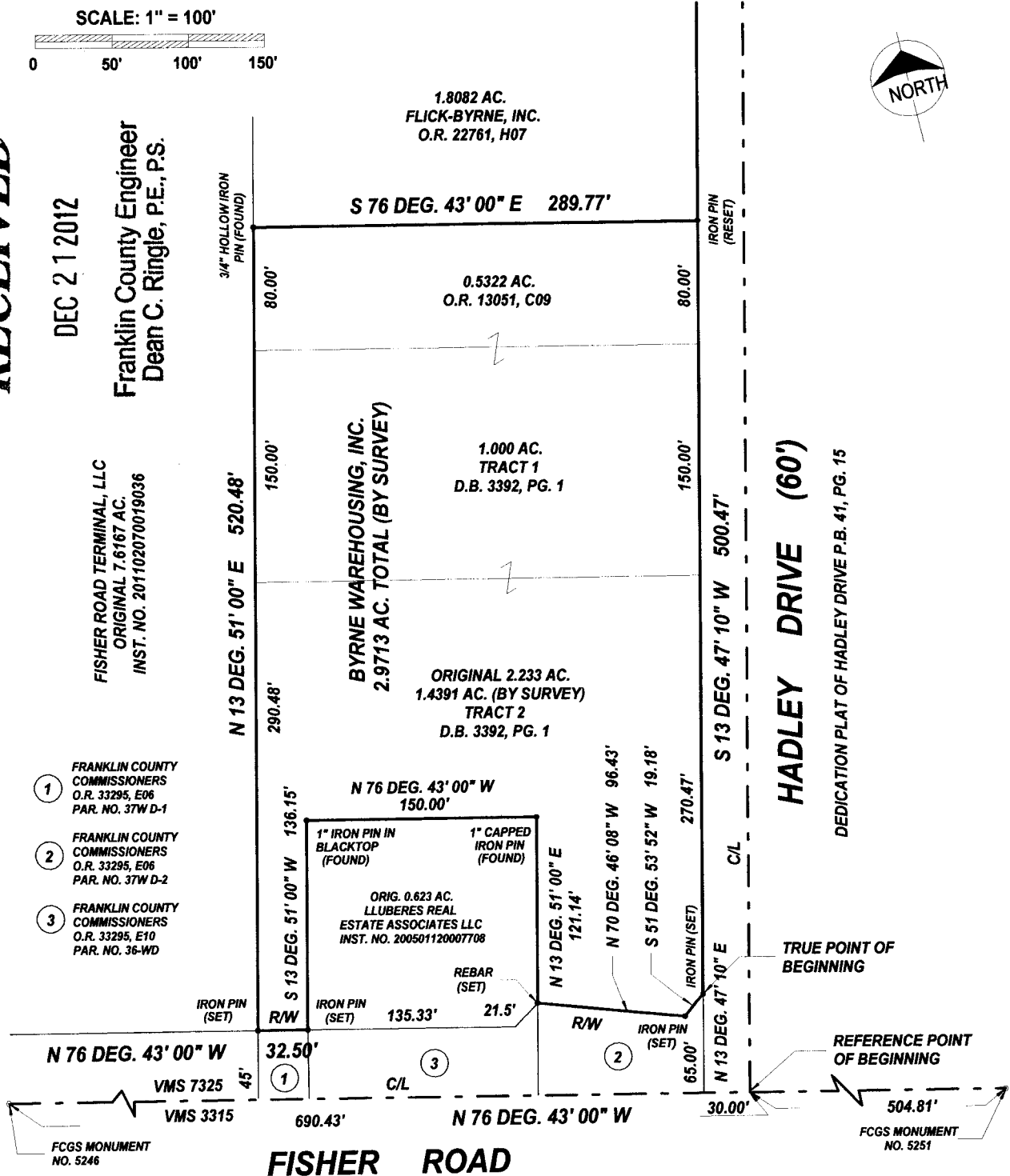
RECEIVED

DEC 21 2012

Franklin County Engineer
Dean C. Ringle, P.E., P.S.

FISHER ROAD TERMINAL, LLC
ORIGINAL 7.6167 AC.
INST. NO. 201102070019036

- 1 FRANKLIN COUNTY COMMISSIONERS
O.R. 33295, E06
PAR. NO. 37W D-1
- 2 FRANKLIN COUNTY COMMISSIONERS
O.R. 33295, E06
PAR. NO. 37W D-2
- 3 FRANKLIN COUNTY COMMISSIONERS
O.R. 33295, E10
PAR. NO. 36-WD



All iron pins designated as "set or reset" are 5/8" (I.D.) x 30" iron pipe capped with a plastic cap stamped S-7272 and have been set by Compass Surveying Solutions. All iron pins denoted as "found" have been set by others.

The basis of bearing is the westerly line of Hadley Drive being S 13 deg. 47' 10" W as the same is designated and delineated on the Dedication Plat of Hadley Drive, of record in Plat Book 41, Page 15, Recorder's Office, Franklin County, Ohio.

The foregoing plat was prepared from existing deed, plat and survey information also an actual field survey of the premises in accordance with Chapter 4733-37 Ohio Administrative Code by Compass Surveying Solutions during December 2012.

12/20/12

By

G. Dean Erlenbach
Ohio Registered Surveyor No. 7272

