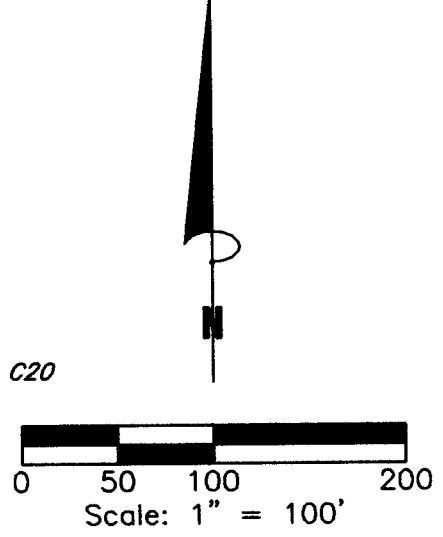
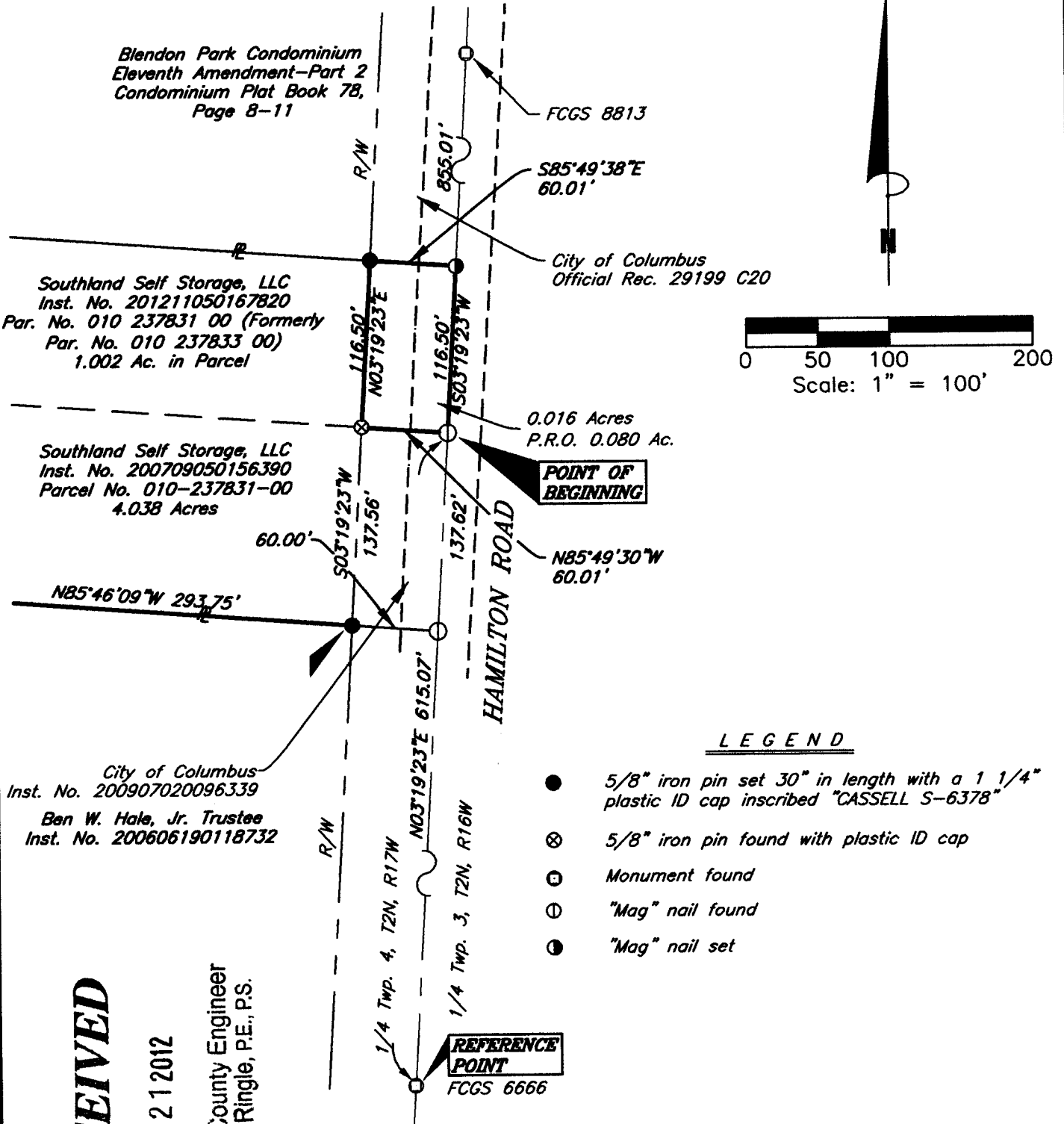


PLAT OF SURVEY

Situated in the State of Ohio, County of Franklin, City of Columbus, located in Lot 17 as shown on the Chancery Rec. 4, Page 295 on record in the Franklin County Clerk of Courts Office, Quarter Township 4, Township 2 North, Range 17 West, United States Military Lands and being part of a parcel of land conveyed to Southland Self Storage, LLC in Instrument No. 201211050167820 (Parcel No. 010-237831-00, Formerly 010-237833-00 and 010-237830-00).



Blendon Park Condominium
Eleventh Amendment-Part 2
Condominium Plat Book 7B,
Page 8-11

Southland Self Storage, LLC
Inst. No. 201211050167820
Par. No. 010 237831 00 (Formerly
Par. No. 010 237833 00)
1.002 Ac. in Parcel

Southland Self Storage, LLC
Inst. No. 200709050156390
Parcel No. 010-237831-00
4.038 Acres

City of Columbus
Inst. No. 200907020096339
Ben W. Hale, Jr. Trustee
Inst. No. 200606190118732

POINT OF BEGINNING

REFERENCE POINT
FCGS 6666

LEGEND

- 5/8" iron pin set 30" in length with a 1 1/4" plastic ID cap inscribed "CASSELL S-6378"
- ⊗ 5/8" iron pin found with plastic ID cap
- ⊠ Monument found
- ⊙ "Mag" nail found
- ⦿ "Mag" nail set

RECEIVED

DEC 21 2012

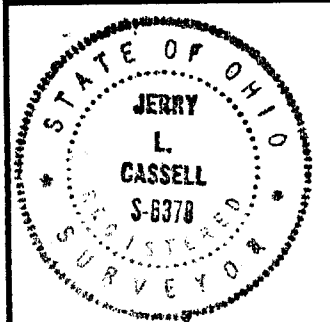
Franklin County Engineer
Dean C. Ringle, P.E., P.S.

NOTE: The bearing system for this plat is based on Franklin County Geodetic Survey Monument No.'s 6666 and 8813 and bears N 03° 19' 23" E and is for the determination of angles only.

I hereby certify that this plat was prepared from an actual field survey of the premises in Aug of 2012 and from existing public records and that said plat correctly shows the limits of the parcel to be conveyed.

This certification was made by me on this 17th day of Dec, 2012.

Jerry L. Cassell
Jerry L. Cassell
Ohio Professional Surveyor No. 6378



FOR:	Cole Ellis
BY:	Jerry L. Cassell
DATE:	Dec. 17, 2012
PROJ. NO.:	FR0726RW



CASSELL & ASSOCIATES, LLC
PROFESSIONAL LAND SURVEYING

20525 Buena Vista Road Rockbridge, Ohio 43149
(740) 969-0024