

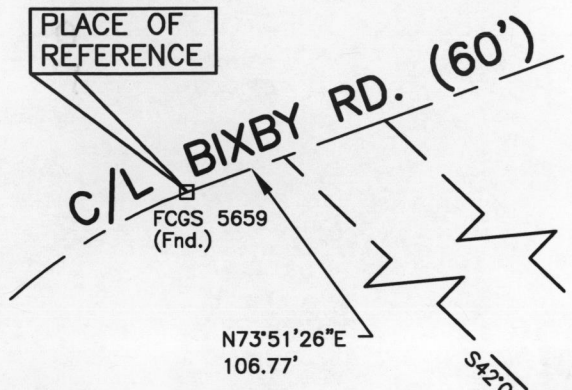
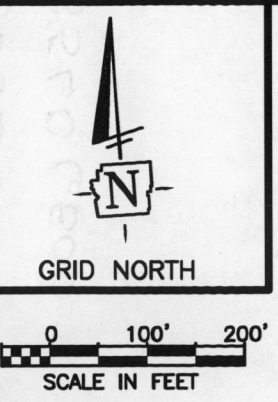
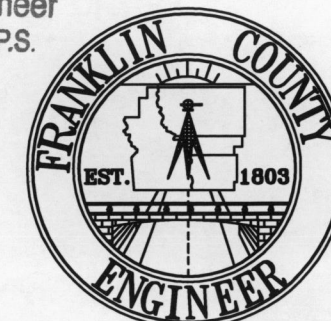
# EXHIBIT OF A 11.716 ACRE TRACT

BEING A PART OF SECTION 20, TOWNSHIP 11 NORTH, RANGE 21 WEST,  
CONGRESS LANDS EAST OF THE SCIOTO  
CITY OF GROVEPORT, FRANKLIN COUNTY, OHIO  
INCLUDING HISTORIC HENDRON CEMETRY

RECEIVED

NOV 29 2012

Franklin County Engineer  
Dean C. Ringle, P.E., P.S.



COLUMBUS AND SOUTHERN OHIO  
ELECTRIC COMPANY  
47.392 AC. TRACT  
D.B. 1070, PG. 471  
D.B. 624, PG. 552

AMERICAN ELECTRIC POWER, A  
NEW YORK CORPORATION  
23.725 AC. TRACT  
O.R.10605B19

FRANKLIN COUNTY COMMISSIONERS  
8.309 AC. TRACT  
INST. NO. 200809120138675

CHESAPEAKE AND OHIO RAILWAY  
FROM HOCKING VALLEY RAILWAY CO.,  
D.B.924, PG.338,  
NOW KNOWN AS CSX TRANSPORTATION, INC.,  
O.R.13276A14 AND 13283G13  
ORIGINAL PARTITION PARCELS 24 AND 25,  
COMPLETE RECORD VOL. 5, PG.482  
9.123 AC. TRACT

11.716 ACRES  
PATRICIA J. LEWIS, TRUSTEE OF THE  
TRUST AGREEMENT OF PATRICIA J. LEWIS  
DATED NOVEMBER 13, 2009  
(ORIGINAL) 13.936 AC. TRACT  
INST. NO.200911170165452

STATE OF OHIO  
5.953 AC. TRACT  
D.B.3282, PG.175

NOTE:

IRON PINS SET ARE 5/8" REBAR WITH YELLOW PLASTIC  
CAP STAMPED "FRANKLIN COUNTY ENGINEER".

LEGEND

- ⊗ - CAPPED 5/8" REBAR WITH "FRANKLIN COUNTY ENGINEER"  
CAP, FOUND.
- ⊙ - CAPPED IRON PIN WITH "HAINES" CAP, FOUND.



BASIS OF BEARINGS:

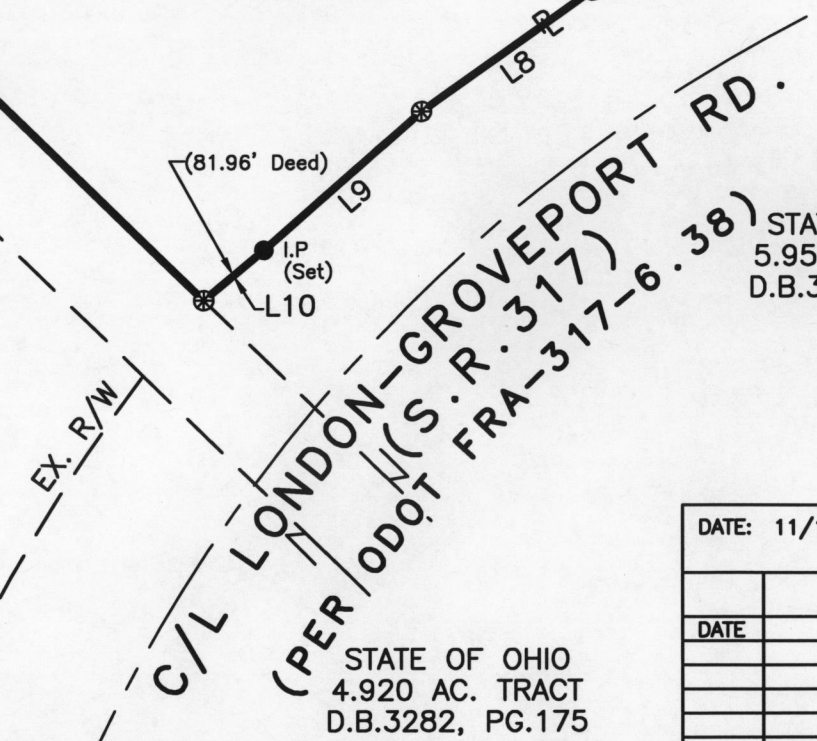
BEARINGS SHOWN HEREON ARE BASED ON THE BEARING OF  
(N05°23'56"E) AND IS BASED ON THE OHIO STATE COORDINATE  
SYSTEM SOUTH ZONE AND THE NORTH AMERICAN DATUM OF 1983  
(NSRS 2007), AS ESTABLISHED FROM A GPS SURVEY PERFORMED  
BY THE FRANKLIN COUNTY ENGINEER'S SURVEY DEPARTMENT IN  
2009, OCCUPYING MONUMENTS "HAMILTON" AND HAMILTON AZIMUTH".

THIS PLAT WAS PREPARED FROM AN ACTUAL FIELD SURVEY IN  
AUGUST, SEPTEMBER AND NOVEMBER 2012, BY THE FRANKLIN  
COUNTY ENGINEER'S OFFICE, ALONG WITH PUBLIC RECORDS ON FILE  
IN THE FRANKLIN COUNTY RECORDER'S OFFICE AND THE FRANKLIN  
COUNTY ENGINEER'S OFFICE.

BEARING TABLE		
Course	Bearing	Distance
L1	S04°06'50"W	54.52'
L2	S43°50'41"E	97.38'
L3	S35°57'37"E	60.91'
L4	S12°54'45"E	127.86'
L5	N70°14'32"E	60.44'
L6	S12°51'53"E	31.61'
L7	S66°47'25"W	209.80'
L8	S58°09'45"W	216.72'
L9	S52°28'11"W	217.81'
L10	S53°43'34"W	81.16'

*David L. Pearson*  
DAVID L. PEARSON  
OHIO REGISTERED SURVEYOR NO. 7298

11/26/2012  
DATE



DATE: 11/16/12	DRAWING: 11.716	
	DRAWN BY: DKT	
REVISIONS		
DATE	DESCRIPTION	BY

STATE OF OHIO  
4.920 AC. TRACT  
D.B.3282, PG.175