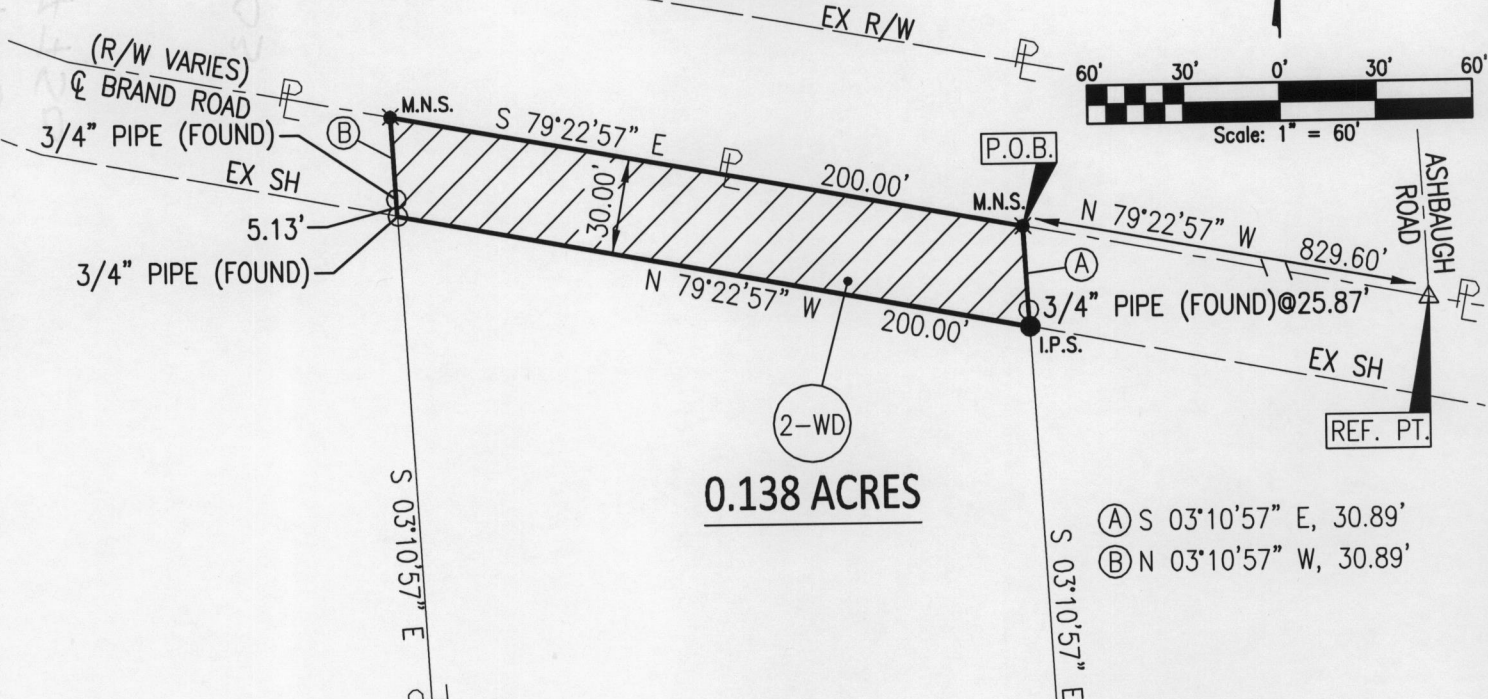
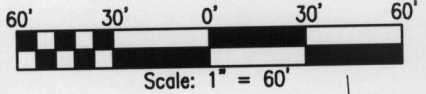


EXHIBIT B
PARCEL 2-WD
BRAND ROAD SHARED-USE PATH
 CITY OF DUBLIN, FRANKLIN COUNTY, OHIO
 V.M.S. 2544



0.138 ACRES

- Ⓐ S 03°10'57" E, 30.89'
- Ⓑ N 03°10'57" W, 30.89'

①
 WASHINGTON TOWNSHIP
 BOARD OF TRUSTEES
 273-004780-00
 2.914 ACRES
 O.R. 12406, PG. D09

②
 MICHAEL A. &
 JUDITH E. TEETS
 273-000436-00
 2.500 ACRES
 O.R. 25045, PG. B20

③
 MICHAEL A. WADE
 273-000379-00
 1.921 ACRES
 INST. #200111280274896

RECEIVED

DEC 14 2012

Franklin County Engineer
 Dean C. Ringle, P.E., P.S.



Pride in the Details. Passion in our People.
 355 E. CAMPUS VIEW BLVD
 COLUMBUS, OH 43235
 (614) 847-4670

- LEGEND:**
- △ RAILROAD SPIKE FOUND
 - IRON MONUMENT FOUND
 - I.P.S. 3/4" I.D. PIPE SET W/CAP STAMPED "W.E. STILSON"
 - M.N.S. MAGNAIL SET

BASIS OF BEARINGS:
 THE BEARINGS FOR THIS SURVEY ARE BASED ON THE BEARING BETWEEN FRANKLIN COUNTY ENGINEER'S STATIONS "MCNEAL" AND "FCGS 6648" BEING S 15°07'52" E, AS MEASURED USING GPS METHODS AND THE OHIO STATE PLANE COORDINATE SYSTEM, SOUTH ZONE, NAD 83 (1986 ADJUSTMENT).

John Jeffrey Raab 12/14/12
 JOHN JEFFREY RAAB, P.S. 7863 DATE