

**SURVEY OF LOCKBOURNE, OHIO CEMETERY LOTS 54,56,58,&60,
 PLAT OF LOCKBOURNE ORIGINALLY PLATTED IN D.B. 10, PG.115,
 DESTROYED BY FIRE, AS REPRESENTED IN P.B.5, PG'S.56-59 & P.B.6, PG.17-B
 HAMILTON TOWNSHIP, FRANKLIN COUNTY, OHIO**



GRID NORTH



NOTE
 IRON PINS SET ARE 5/8" REBAR WITH YELLOW PLASTIC CAP STAMPED "FRANKLIN COUNTY ENGINEER".

LEGEND

■ - THE MOST EASTERLY AND WESTERLY HEADSTONES OF THE CEMETERY

BASIS OF BEARINGS:

BEARINGS SHOWN HEREON ARE BASED ON THE BEARING (N89°11'33"E) AS SHOWN ALONG THE SOUTHERLY RIGHT-OF-WAY LINE OF LANDIS STREET, AND IS BASED ON THE OHIO STATE PLANE COORDINATE SYSTEM, SOUTH ZONE AND NORTH AMERICAN DATUM OF 1983 (86), AS ESTABLISHED FROM A GPS SURVEY PERFORMED BY THE FRANKLIN COUNTY ENGINEER'S SURVEY DEPARTMENT IN 1987 & 1991, OCCUPYING MONUMENTS "FCGS 2222" AND "FCGS 9926".

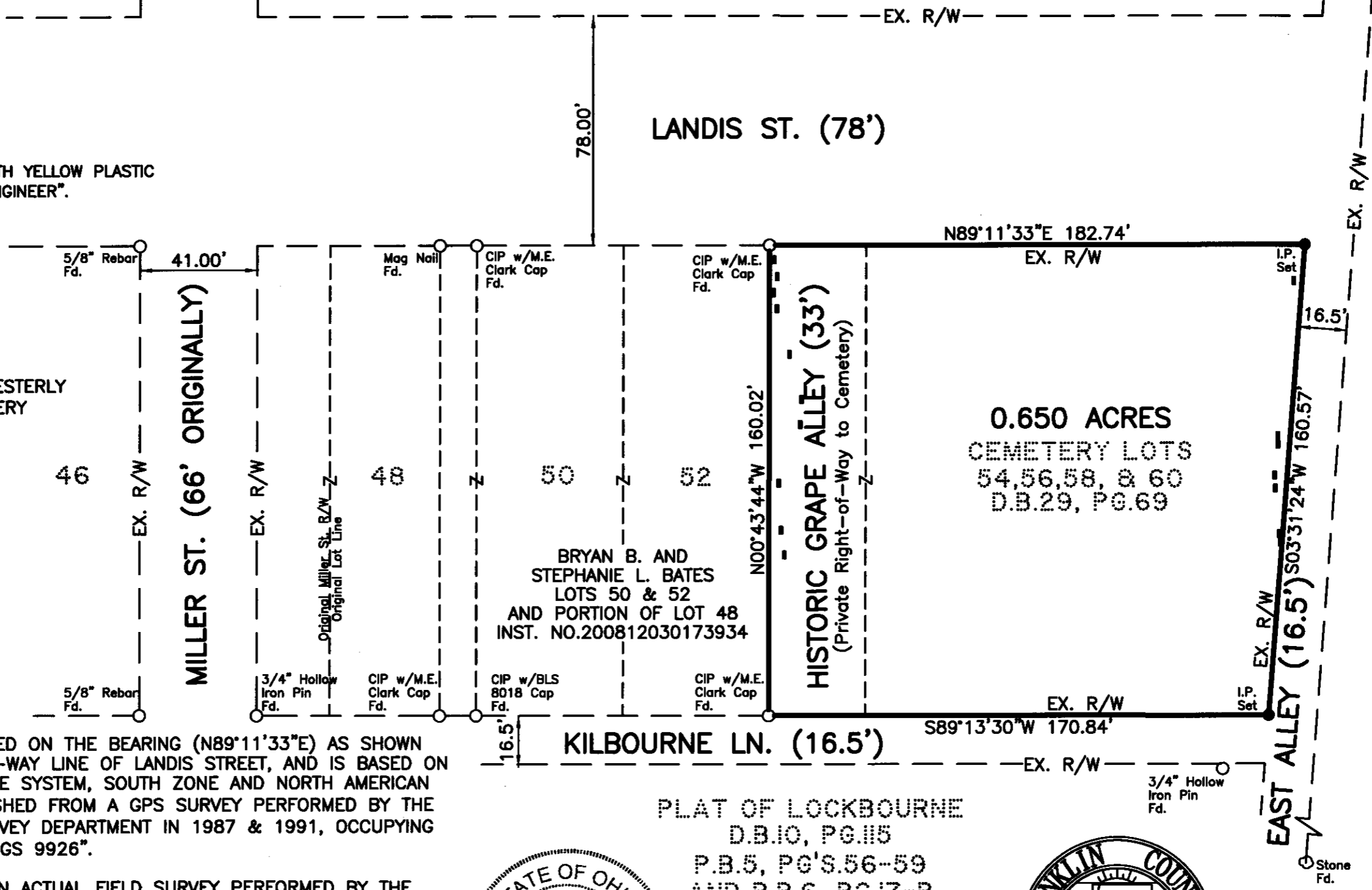
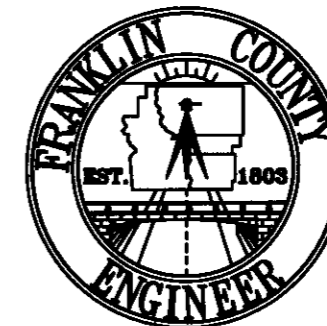
THIS PLAT WAS PREPARED FROM AN ACTUAL FIELD SURVEY PERFORMED BY THE FRANKLIN COUNTY ENGINEER'S OFFICE IN NOVEMBER, 2012, ALONG WITH PUBLIC RECORDS ON FILE IN THE FRANKLIN COUNTY RECORDER'S OFFICE AND THE FRANKLIN COUNTY ENGINEER'S OFFICE.

David L. Pearson
 DAVID L. PEARSON
 OHIO REGISTERED SURVEYOR. NO.7298

12/14/2012
 DATE



PLAT OF LOCKBOURNE
 D.B.10, PG.115
 P.B.5, PG'S.56-59
 AND P.B.6, PG.17-B



CSX TRANSPORTATION INC.,
 SUCCESSOR BY MERGER,
 O.R.13276A16 & O.R.13283G13
 F.K.A. CHESAPEAKE AND OHIO RAILWAY,
 D.B.923, PG.390
 ORIGINALLY PARTITIONED IN D.B.796, PG.337

DATE: 12-14-12		DRAWING: Lock Cem 2012	
		DRAWN BY: DKT	
REVISIONS			
DATE	DESCRIPTION	BY	