



Evans, Mechwart, Hambleton & Titon, Inc.  
Engineers • Surveyors • Planners • Scientists  
5500 New Albany Road, Columbus, OH 43054  
Phone: 614.775.4500 Toll Free: 888.775.3648  
emht.com

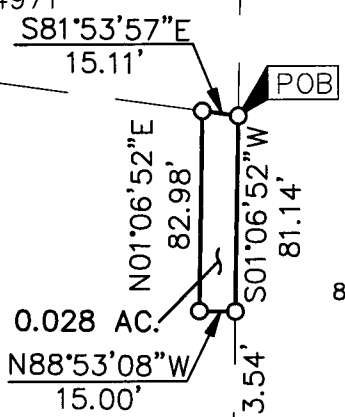
# SURVEY OF ACREAGE PARCEL

VIRGINIA MILITARY SURVEY NO. 1434  
CITY OF GROVE CITY, COUNTY OF FRANKLIN, STATE OF OHIO

Date: July 24, 2012 Job No. 2011-0585 Scale: 1" = 80'

MARA ENTERPRISES,  
INCORPORATED  
0.697 AC. (DEED)  
D.B. 3325, P. 153  
P.N. 040-004971

SEP 26 2012  
Franklin County Engineer  
Dean C. Ringle, P.E., P.S.



- = STONE FND.
- = MON. FND.
- = I.P. FND.
- = I.P. SET
- = MAG. NAIL FND.
- = MAG. NAIL SET
- ▲ = R.R. SPK. FND.
- △ = R.R. SPK. SET
- ◆ = P.K. NAIL FND.

I.P. Set are 13/16" I.D. iron pipe with cap inscribed EMHT INC

GRAPHIC SCALE (in feet)

GATEWAY BUSINESS PARK  
P.B. 86, PP. 4 & 5  
LOT 6

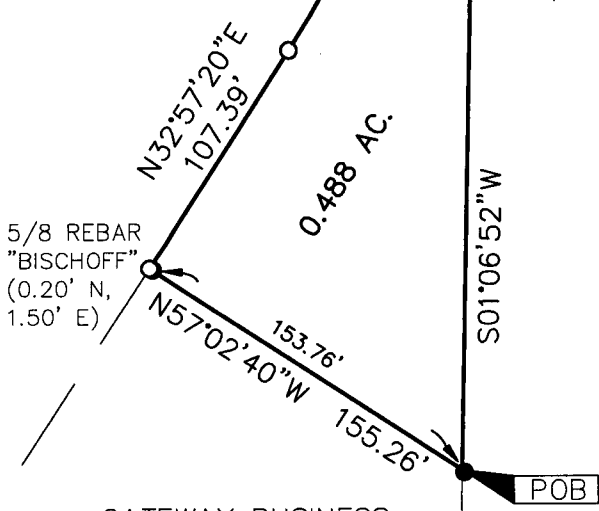
CROSSROADS OHIO LLC  
I.N. 200512160265086  
P.N. 040-009553

△=31°50'28"  
R=500.00'  
Arc=277.87'  
ChB=N17°02'06"E  
ChD=274.30'

THE BUCKEYE RANCH FOUNDATION, INC.  
85.5735 AC. (DEED)  
I.N. 199809090228735  
P.N. 040-004974

SURVEY NOTE:  
This survey was prepared using documents of record, prior plats of survey, and observed evidence located by an actual field survey performed by EMH&T in June 2011.

BASIS OF BEARINGS:  
Bearings are based on the Ohio State Plane Coordinate System, South Zone, per NAD83 (1986 adjustment). Control for bearings was from coordinates of monuments FCGS 5548 and FCGS 5539, having a bearing of North 00 degrees 21 minutes 40 seconds East for a portion of the centerline of Hoover Road, established by the Franklin County Engineering Department.



5/8 REBAR  
"BISCHOFF"  
(0.20' N,  
1.50' E)

GATEWAY BUSINESS PARK, LLC  
I.N. 200402250040578  
P.N. 040-009551

GATEWAY BUSINESS PARK  
P.B. 86, PP. 4 & 5  
LOT 4

3/4 IRON PIPE  
(1.06' S, 0.96' E)



By *Heather L. King* Date *9/24/12*  
Heather L. King  
Professional Surveyor No. 8307

RECEIVED

J:\20110585\20110585S\DWG\20110585RNDY\_07.DWG plotted by KING, HEATHER on 9/24/2012 10:18:59 AM last saved by HKING on 9/24/2012 10:18:50 AM Xrefs.