



Evans, Mechwart, Hambleton & Tilton, Inc.
Engineers • Surveyors • Planners • Scientists
5500 New Albany Road, Columbus, OH 43054
Phone: 614.775.4500 Toll Free: 888.775.3648
emht.com

SURVEY OF ACREAGE PARCEL

SURVEY NUMBER 287

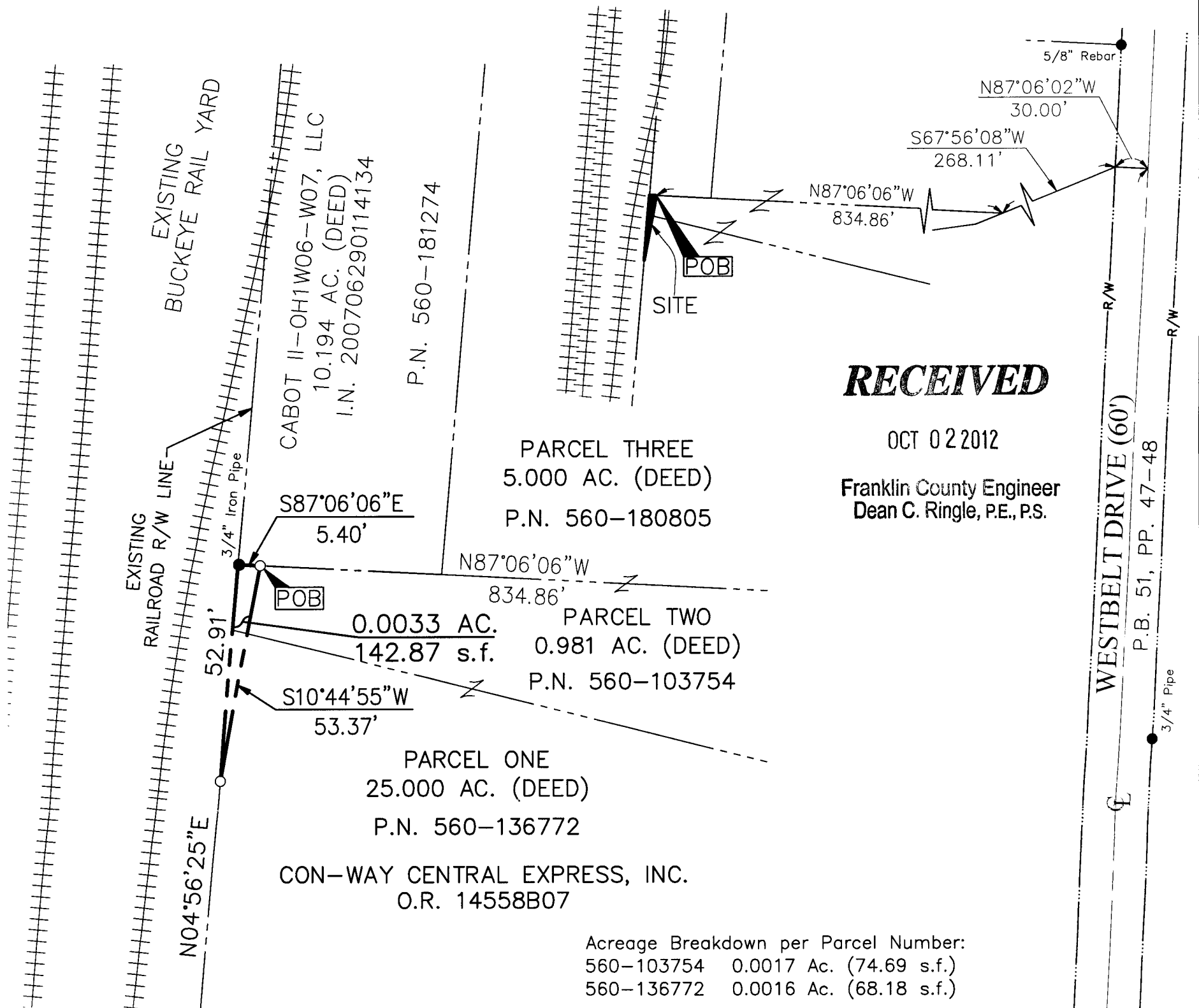
VIRGINIA MILITARY DISTRICT

CITY OF COLUMBUS, COUNTY OF FRANKLIN, STATE OF OHIO

Date: October 1, 2012

Job No. 2011-1098

Scale: 1" = 30'



RECEIVED

OCT 02 2012

Franklin County Engineer
Dean C. Ringle, P.E., P.S.

Acreage Breakdown per Parcel Number:

560-103754	0.0017 Ac. (74.69 s.f.)
560-136772	0.0016 Ac. (68.18 s.f.)

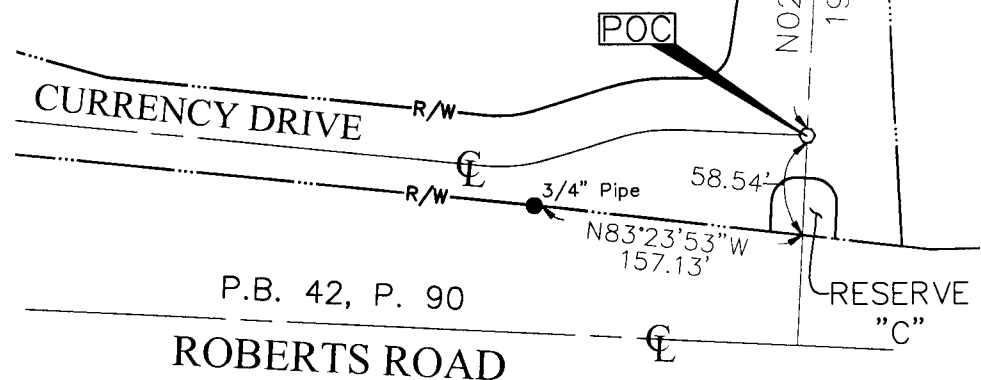
BASIS OF BEARINGS:

The bearings described herein are based on the Ohio State Plane Coordinate System, South Zone, NAD83 (1986 adjusted). Said bearings originated from a field traverse which was tied (referenced) to said coordinate system by GPS observations and observations of selected Franklin County Engineering Department monuments FCGS 5407 and FCGS 6654 RESET. The portion of the centerline of Westbelt Drive, having a bearing of North 02° 53' 58" East, is designated the "basis of bearing" for this survey.

SURVEY NOTE:

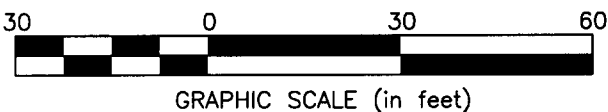
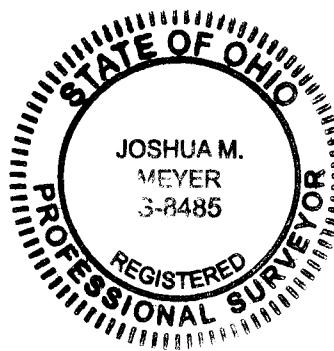
This survey was prepared using documents of record, prior plats of survey, and observed evidence located by an actual field survey.

LEAD-IN COURSES
SCALE: 1"=100'



- = STONE FND.
- = MON. FND.
- = I.P. FND.
- = I.P. SET
- = MAG. NAIL FND.
- = MAG. NAIL SET
- ▲ = R.R. SPK. FND.
- △ = R.R. SPK. SET
- ◆ = P.K. NAIL FND.

Set 5#8" rebar 30" long with cap inscribed EMHT INC, witnessed by 6-foot metal "T" post.



By Joshua M. Meyer
Joshua M. Meyer
Professional Surveyor No. 8485

10-1-2012
Date