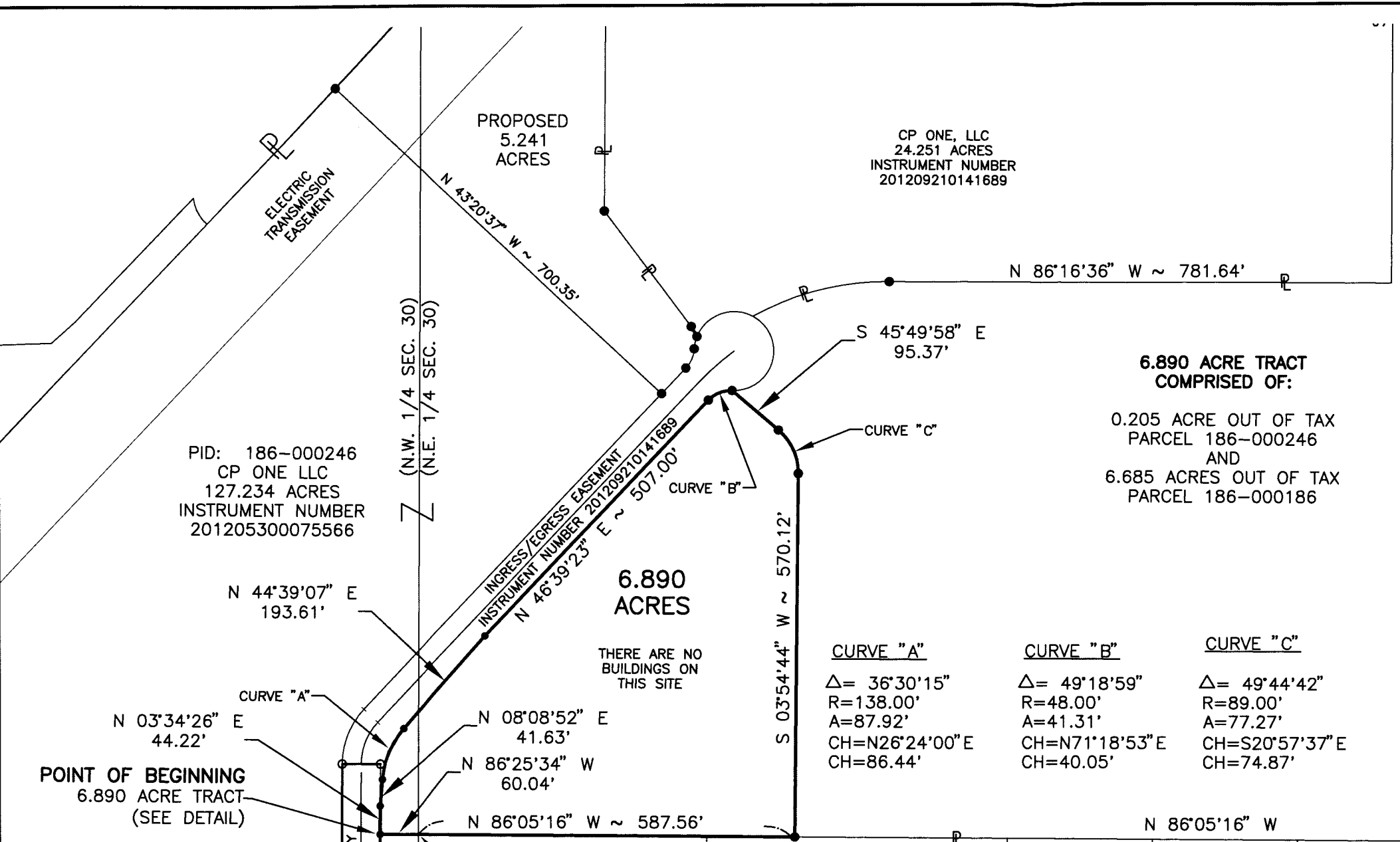


- LEGEND**
- ☒ = FRANKLIN COUNTY MONUMENT
 - = IRON PIN FOUND
 - = IRON PIN SET (5/8" REBAR, 30" LONG WITH PLASTIC CAP STAMPED "BRH GROUP").

RECEIVED

OCT 17 2012

Franklin County Engineer
Dean C. Ringle, P.E., P.S.

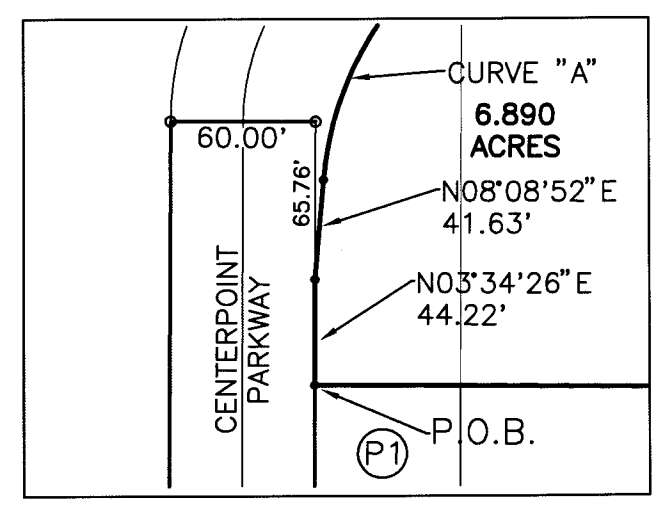


**6.890 ACRE TRACT
COMPRISED OF:**

0.205 ACRE OUT OF TAX
PARCEL 186-000246
AND
6.685 ACRES OUT OF TAX
PARCEL 186-000186

| CURVE "A" | CURVE "B" | CURVE "C" |
|------------------------------|------------------------------|------------------------------|
| $\Delta = 36^\circ 30' 15''$ | $\Delta = 49^\circ 18' 59''$ | $\Delta = 49^\circ 44' 42''$ |
| R=138.00' | R=48.00' | R=89.00' |
| A=87.92' | A=41.31' | A=77.27' |
| CH=N26°24'00"E | CH=N71°18'53"E | CH=S20°57'37"E |
| CH=86.44' | CH=40.05' | CH=74.87' |

PID: 186-000186
CP ONE LLC
127.234 ACRES
INSTRUMENT NUMBER
201205300075566



POINT OF BEGINNING
6.890 ACRE TRACT
(SEE DETAIL)

THERE ARE NO
BUILDINGS ON
THIS SITE

PID: 186-000397
RESERVE "C" ~ 1.271 ACRES
CENTERPOINT PHASE I
PLAT BOOK 110, PAGE 59

PID: 186-000395
BRE/EX US PROPERTIES LLC
26.113 ACRES (ORIGINAL)
INSTRUMENT NUMBER
201012160171033

PID: 180-005081
AHMADIYYA MOVEMENT
IN ISLAM, INC. USA
6.534 ACRES
INSTRUMENT NUMBER
200107190164081

PID: 180-005082
KRISTEN H. WOODWARD
6.534 ACRES
INSTRUMENT NUMBER
200906050081156
PREVIOUS INSTRUMENT NUMBER
200206100142729

PID: 180-005083
DANIEL & SUSAN
HARDYMAN
5.001 ACRES
INSTRUMENT
NUMBER
200206030135767

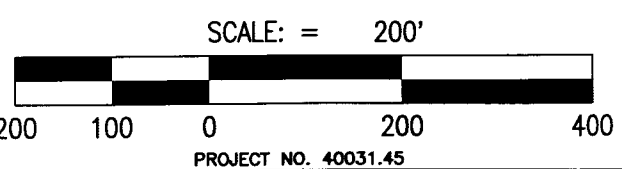
PID: 180-005084
JOHN H. & VICKI
S. MARCUM
5.001 ACRES
O.R.V. 32458
C-07

PID: 180-005085
ARCHIE &
ALICE WARD
5.036 ACRES
INSTRUMENT
NUMBER
200105090101577

PID: 180-003807
BOUNTHAVY & VILAYVANH THONGSAWATH
5.003 ACRES
D.V. 19389 P. 103

BASIS OF BEARINGS

BEARINGS ARE BASED ON NORTH 86°16'36" WEST, ALONG THE NORTHERLY LINE OF SAID 127.234 ACRE TRACT AS DESCRIBED IN THE DEED TO CP ONE LLC, OF RECORD IN INSTRUMENT NUMBER 201205300075566, ON FILE IN THE RECORDER'S OFFICE, FRANKLIN COUNTY, OHIO.



THE FOREGOING PLAT WAS PREPARED BY BRH GROUP, INC. FROM AN ACTUAL FIELD SURVEY OF THE PREMISES IN AUGUST 2012. UNDER THE DIRECT SUPERVISION OF JOHN L. PRICE, REGISTERED PROFESSIONAL SURVEYOR NO. 7159.

John L. Price
JOHN L. PRICE,
PROFESSIONAL SURVEYOR No. 7159

10/17/2012



LOT SPLIT SURVEY
VILLAGE OF OBETZ, OHIO
SCALE: 1" = 200' 10/17/2012