



Evans, Mechwart, Hambleton & Tilton, Inc.
Engineers • Surveyors • Planners • Scientists
5500 New Albany Road, Columbus, OH 43054
Phone: 614.775.4500 Toll Free: 888.775.3648
emht.com

SURVEY OF ACREAGE PARCEL

LOT 4 OF PLAT "C" OF BRUNK'S PARTITION

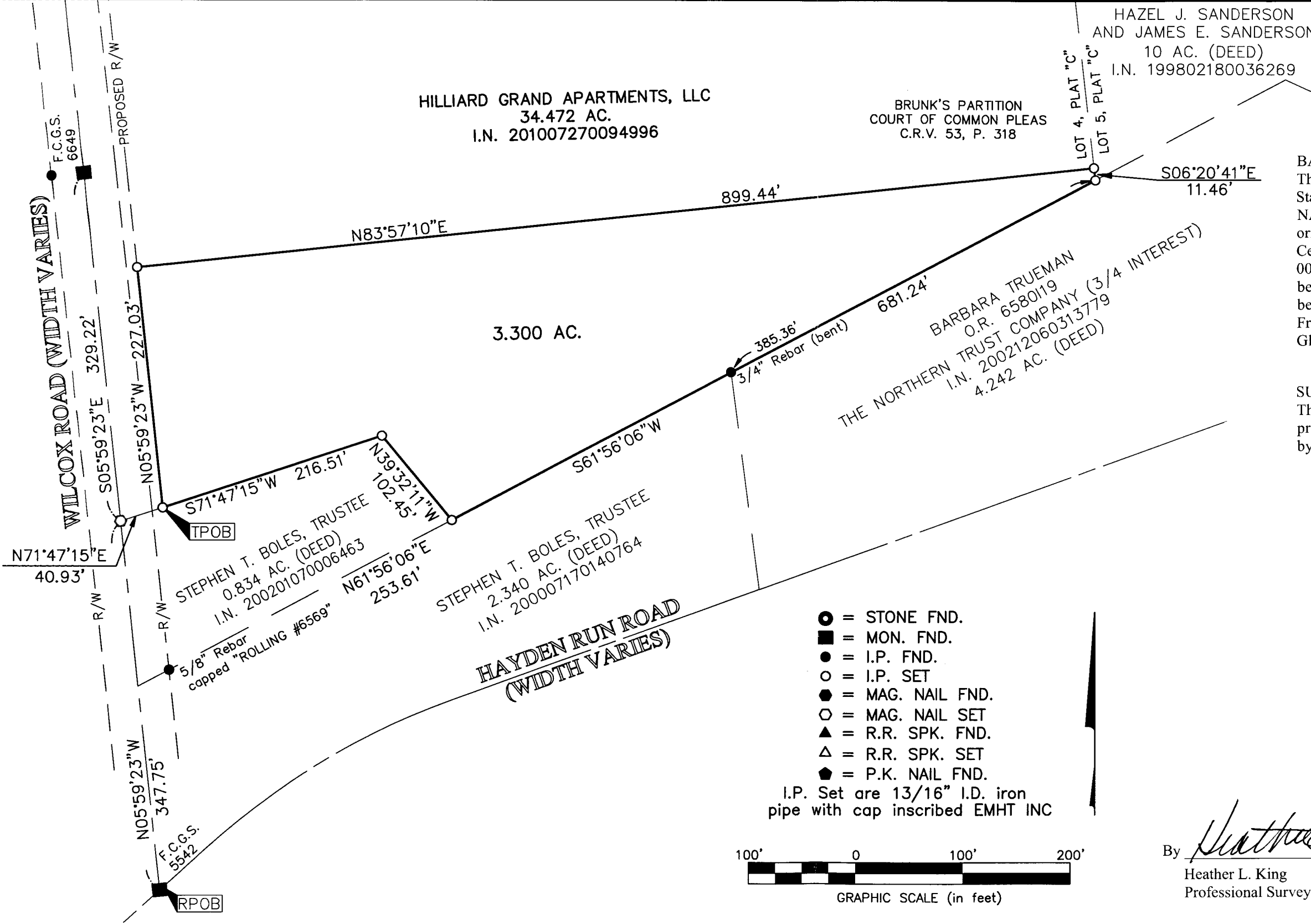
VIRGINIA MILITARY SURVEY NO. 3022

CITY OF HILLIARD, COUNTY OF FRANKLIN, STATE OF OHIO

Date: October 17, 2012

Scale: 1" = 100'

Job No: 2012-1607



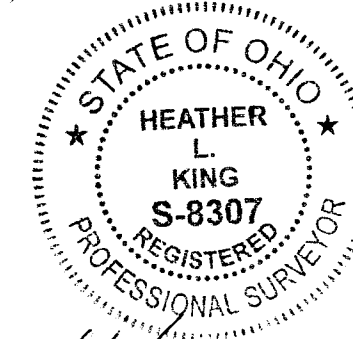
BASIS OF BEARINGS:
The Bearings shown hereon are based on the Ohio State Plane Coordinate System South Zone as per NAD83 (1986 Adjustment). Control for bearings originated from the Franklin County Engineer's Centerline Survey Plat of Wilcox Road, Drawing 0040-01, dated March 3, 2003 showing the bearing between monuments FCGS 4461 and FCGS 6649 as being North 06° 02' 50" West, established by the Franklin County Engineering Department, using Global Positioning System procedures and equipment.

SURVEY NOTE:
This survey was prepared using documents of record, prior plats of survey, and observed evidence located by an actual field survey.

RECEIVED

OCT 18 2012

Franklin County Engineer
Dean C. Ringie, P.E., P.S.



- = STONE FND.
- = MON. FND.
- = I.P. FND.
- = I.P. SET
- = MAG. NAIL FND.
- = MAG. NAIL SET
- ▲ = R.R. SPK. FND.
- △ = R.R. SPK. SET
- = P.K. NAIL FND.

I.P. Set are 13/16" I.D. iron pipe with cap inscribed EMHT INC



GRAPHIC SCALE (in feet)

By *Heather L. King*
Heather L. King
Professional Surveyor No. 8307

10/18/12
Date

5-4-2