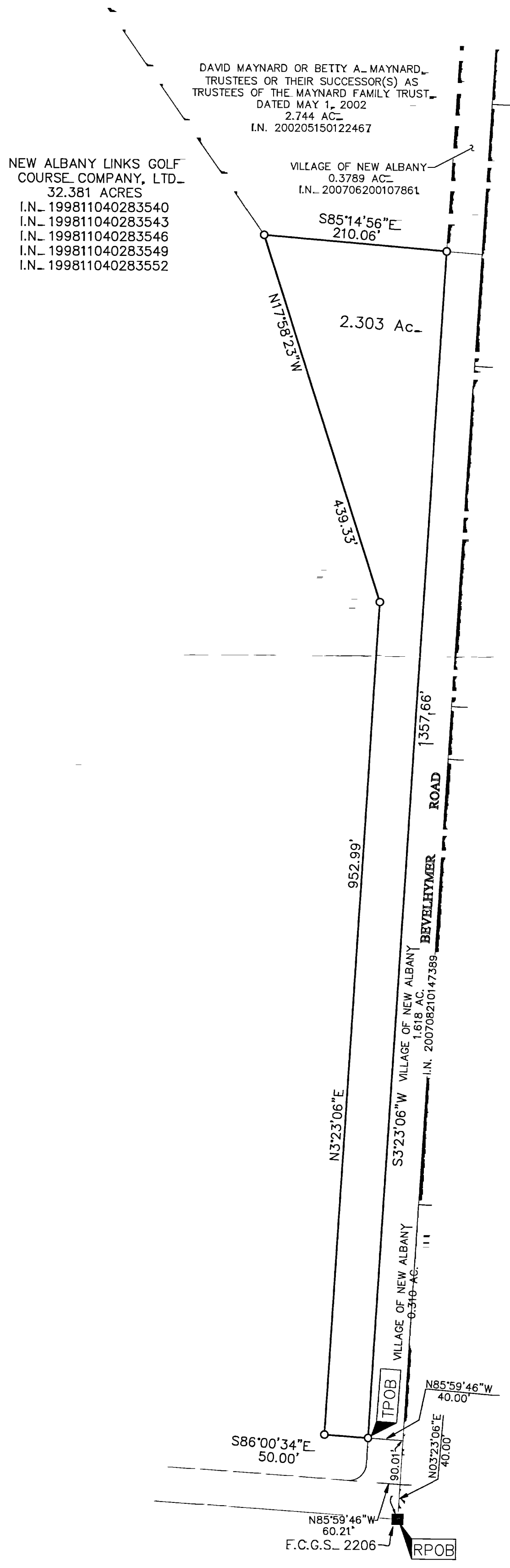


SURVEY OF ACREAGE PARCEL

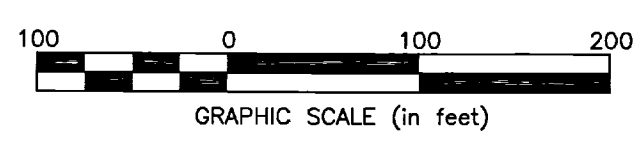
LOT 18, SECTION 9, QUARTERTOWNSHIP 1, TOWNSHIP 2, RANGE 16

UNITED STATES MILITARY LANDS

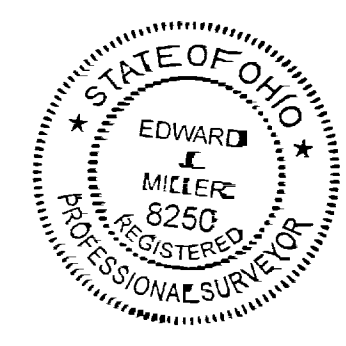
CITY OF NEW ALBANY, COUNTY OF FRANKLIN, STATE OF OHIO



- = STONE FND.
 - = MON. FND.
 - = I.P. FND.
 - = I.P. SET
 - = MAG. NAIL FND.
 - = MAG. NAIL SET
 - ▲ = R.R. SPK. FND.
 - △ = R.R. SPK. SET
 - ◆ = P.K. NAIL FND.
- I.P. Set are 13/16" I.D. iron pipe with cap inscribed EMHT INC



BASIS OF BEARINGS=
 Bearings are based on the Ohio State Plane Coordinate System as per NAD83 (1986 adjustment). Control for bearings was from coordinates of monuments FCGS 2206 & FCGS 2207, having a bearing of North 03° 23' 06" East, established by the Franklin County Engineering Department, using Global Positioning System procedures and equipment.



By [Signature] Professional Surveyor No. 8250 Date 8/21/12

EMHT Evans, Mechwart, Hambleton & Tilton, Inc. Engineers • Surveyors • Planners • Scientists 5500 New Albany Road, Columbus, OH 43054 Phone: 614.775.4300 Toll Free: 888.775.3648 emht.com		Date: August 21, 2012
		Scale: 1" = 100'
		Job No: 20110157
		Sheet: 1 of 1
REVISIONS		
MARK	DATE	DESCRIPTION