

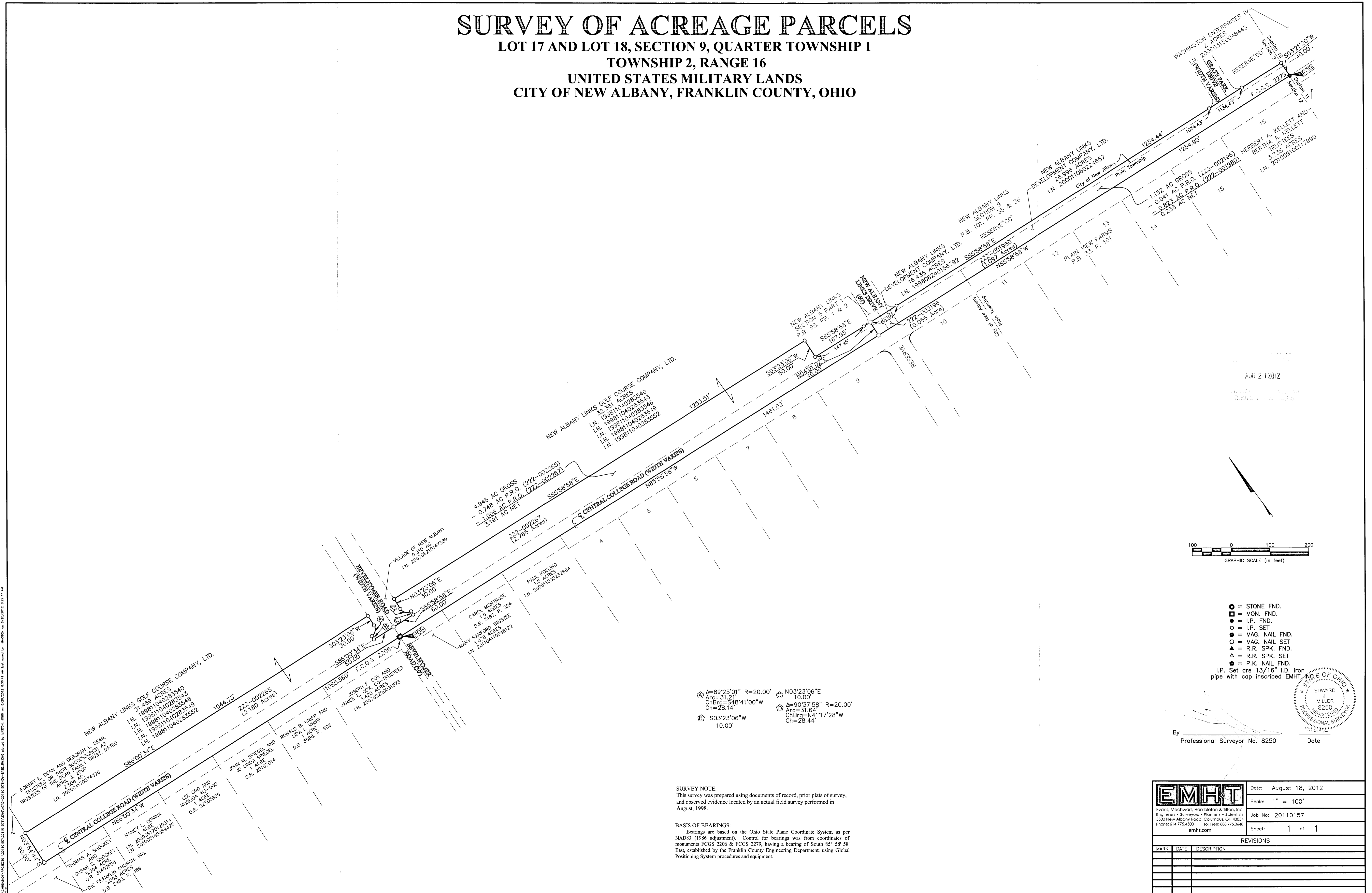
# SURVEY OF ACREAGE PARCELS

## LOT 17 AND LOT 18, SECTION 9, QUARTER TOWNSHIP 1

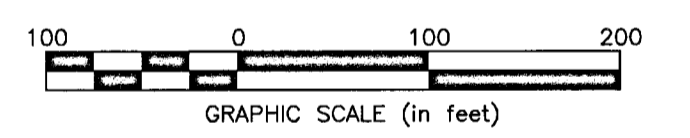
### TOWNSHIP 2, RANGE 16

#### UNITED STATES MILITARY LANDS

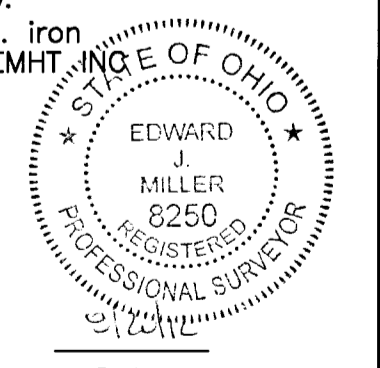
#### CITY OF NEW ALBANY, FRANKLIN COUNTY, OHIO



AUG 2 2012



- = STONE FND.
  - = MON. FND.
  - = I.P. FND.
  - = I.P. SET
  - ⊙ = MAG. NAIL FND.
  - = MAG. NAIL SET
  - ▲ = R.R. SPK. FND.
  - △ = R.R. SPK. SET
  - = P.K. NAIL FND.
- I.P. Set are 13/16" I.D. iron pipe with cap inscribed EMHT.



By \_\_\_\_\_  
Professional Surveyor No. 8250

Date \_\_\_\_\_

**SURVEY NOTE:**  
This survey was prepared using documents of record, prior plats of survey, and observed evidence located by an actual field survey performed in August, 1998.

**BASIS OF BEARINGS:**  
Bearings are based on the Ohio State Plane Coordinate System as per NAD83 (1986 adjustment). Control was from coordinates of monuments FCGS 2206 & FCGS 2279, having a bearing of South 85° 58' 58" East, established by the Franklin County Engineering Department, using Global Positioning System procedures and equipment.

<b>EMHT</b> Evans, Machiwart, Hamblaton & Titon, Inc. Engineers • Surveyors • Planners • Scientists 5500 New Albany Road, Columbus, OH 43254 Phone: 614.775.4302    Toll Free: 888.775.3448 emht.com		Date: August 18, 2012
		Scale: 1" = 100'
Job No: 20110157		Sheet: 1 of 1
REVISIONS		
MARK	DATE	DESCRIPTION