

K-8-C



Evans, Mechwart, Hambleton & Tilton, Inc.
Engineers • Surveyors • Planners • Scientists
5500 New Albany Road, Columbus, OH 43054
Phone: 614.775.4500 Toll Free: 888.775.3648

emht.com

SURVEY OF ACREAGE PARCEL

SECTION 1, TOWNSHIP 11, RANGE 21

BUCKINGHAM'S SURVEY CONGRESS LANDS EAST OF THE SCIOTO RIVER
CITY OF COLUMBUS, COUNTY OF FRANKLIN, STATE OF OHIO

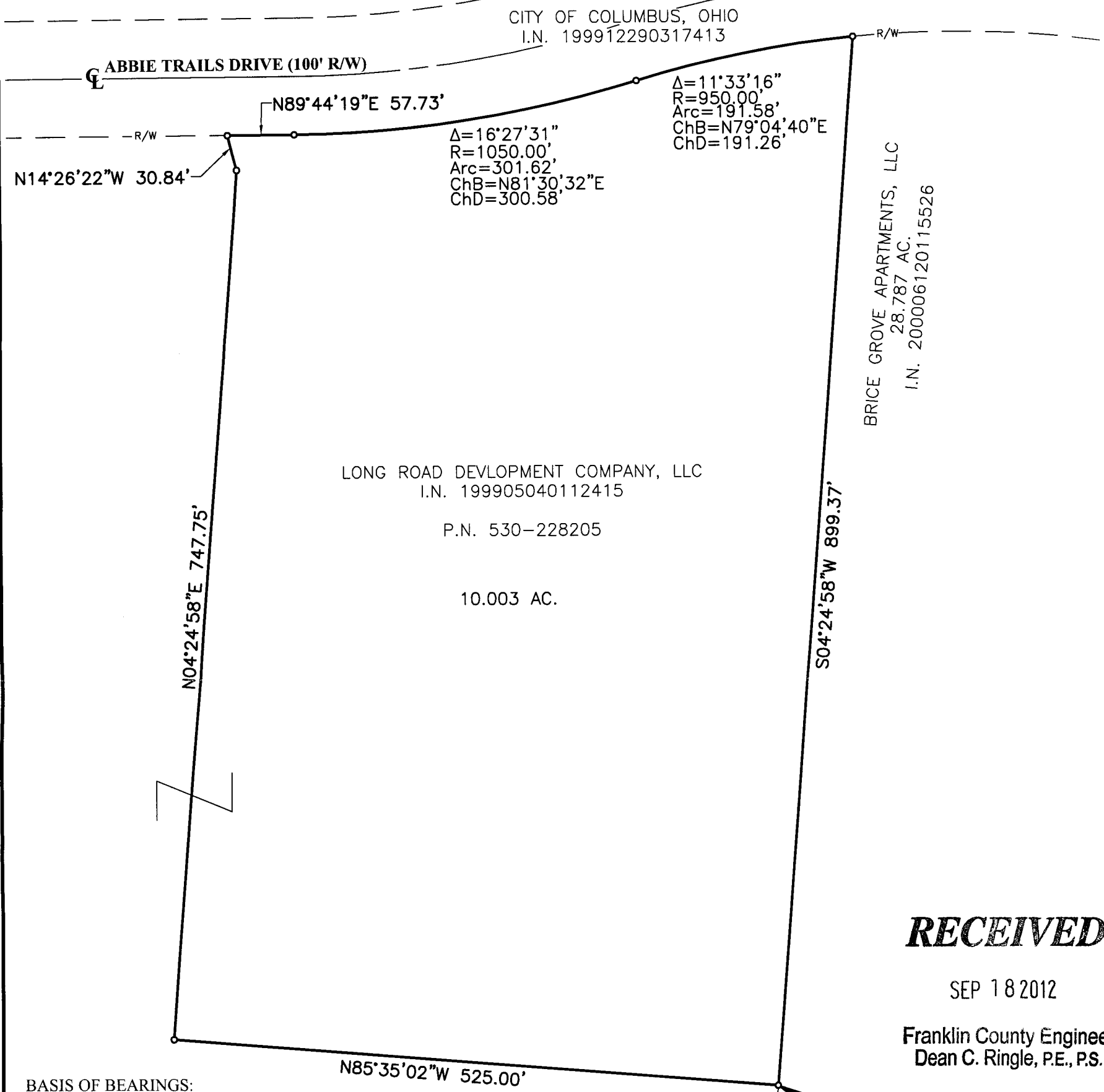
Date: September 17, 2012

Job No. 2012-0788

Scale: 1" = 100'

SURVEY NOTE:

This survey was prepared using documents of record, prior plats of survey, and observed evidence located by an actual field survey in August 2012.



RECEIVED

SEP 18 2012

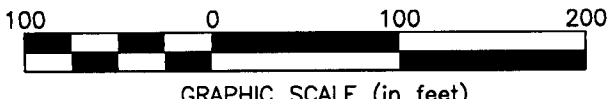
Franklin County Engineer
Dean C. Ringle, P.E., P.S.

BASIS OF BEARINGS:

The bearings shown on this plat are based on the Ohio State Plane Coordinate System, South Zone, NAD83 (NSRS 2007). Said bearings originated from a field traverse which was tied (referenced) to said coordinate system by GPS observations and observations of selected NGS monuments FCGS 5035, and FCGS 5114. The portion of the southerly right-of-way of Abbie Trails Drive, having a bearing of N89°44'19"E and monumented as shown hereon, is designated the "basis of bearing" for this plat.

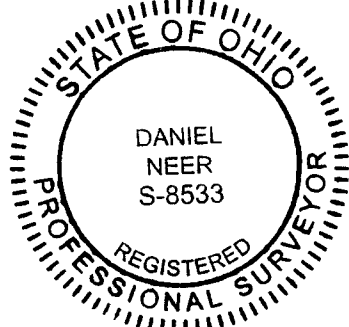
- = STONE FND.
- = MON. FND.
- = I.P. FND.
- = I.P. SET
- = MAG. NAIL FND.
- = MAG. NAIL SET
- ▲ = R.R. SPK. FND.
- △ = R.R. SPK. SET
- ◆ = P.K. NAIL FND.

I.P. Set are 13/16" I.D. iron pipe with cap inscribed EMHT INC



SECTION 1, TOWNSHIP 11, RANGE 21
SECTION 12, TOWNSHIP 11, RANGE 21

1/2" Iron Pipe



SECTION 1, TOWNSHIP 11, RANGE 21
SECTION 6, TOWNSHIP 15, RANGE 20

By Daniel A. Neer
Daniel A. Neer
Professional Surveyor No. 8533

Date 9-18-12

J:\20120788\DWG\CASHEETS\BOUNDARY\20120788-BNDY.DWG plotted by NEER, DANIEL on 9/17/2012 4:22:05 PM last saved by MZISKA on 9/17/2012 2:49:57 PM