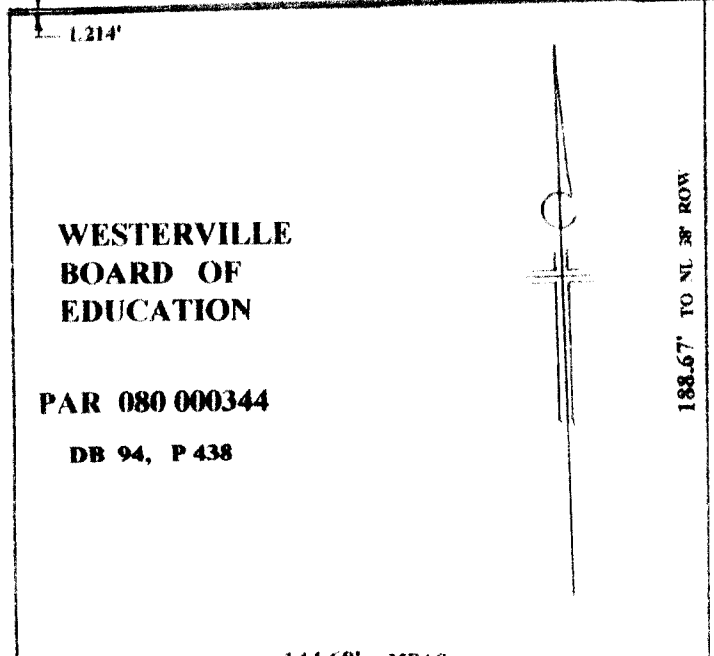


DB 125, P 214

HOME ST

VACATION TO 38' ROW
J & L AUGUST 1932



WESTERVILLE
BOARD OF
EDUCATION

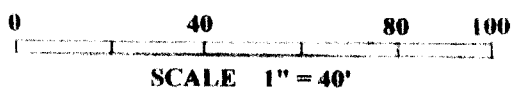
PAR 080 000344

DB 94, P 438

PAR 080
000127 PAR I, TR III

SET IRON PINS ARE 5/8"X30" REBARS WITH YELLOW PLASTIC CAPS EMBOSSED "THOMAS ENGR & SURVEYING" ALL PARCEL NO'S ARE THOSE FOUND IN THE FRANKLIN CO., OHIO AUDITORS RECORDS, INSTRUMENT NO'S AND PLAT BOOKS MENTIONED ARE THOSE FOUND IN THE RECORDERS OFFICE, FRANKLIN COUNTY, OHIO.

BEARINGS ARE BASED ON THE BEARING OF S 00° 30' 00" W FOR THE EAST LINE OF VINE STREET.



144.68' MEAS
SET IP S 88° 23' 33" E

16.5' ALLEY

70.55' MEAS

74.13' SET IP

PAR 080
000689

PAR I, TR I
INST 199806150147484

INGRESS & EGRESS EAS.
TO PAR 080 000689

83.00'

FD IRON
BAR
9" DP

0.343 AC

203.13'

202.83'

N 01° 21' 46" E

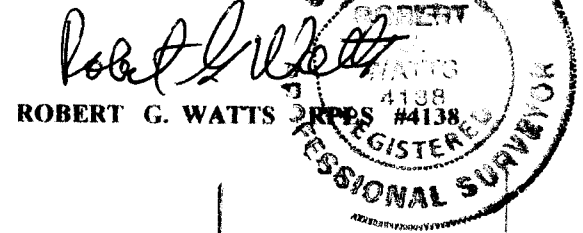
S 01° 37' 09" W

167.69' MEAS

PAR 080 000661
PAR I, TR II

PLAT OF SURVEY
OF 0.343 AC OUT OF
LOT 1 OF
SLAUGHTER & TABLERS ADD
OF OUTLOTS, PB 1, P 200
CITY OF WESTERVILLE,
FRANKLIN COUNTY, OHIO
QTR TWP 2, T2N, R17W, USML
CONV'Y'D BY INST 199806150147484
FOR
MELVIN D. HATCH
JUNE 2012 402-11

THE THOMAS ENG'R & SURVEYING CO.
PO BOX 28098 614 276-3200
COLUMBUS, OHIO 43228



RECEIVED

AUG 11 2012

Franklin County Engineer
Dean C. Ringle, P.E., P.S.

PAR 080
002169

122.79' DEED

INGRESS, EGRESS & PARKING EAS.
FOR 0.343 AC

PAR 080
001035

PAR I, TR I
INST 199806150147484

MAG
NAIL
SET

N 88° 37' 17" W 73.22'

4.95' MEAS

FD IP

POB

S 88° 37' 17" E 259.88' TO FD IP ON C
FORMER RR AT ANGLE PT N COLLEGE AVE

S 87° 22' 08" E 143.72' MEAS

FD IP

COLLEGE AVE

FD IP