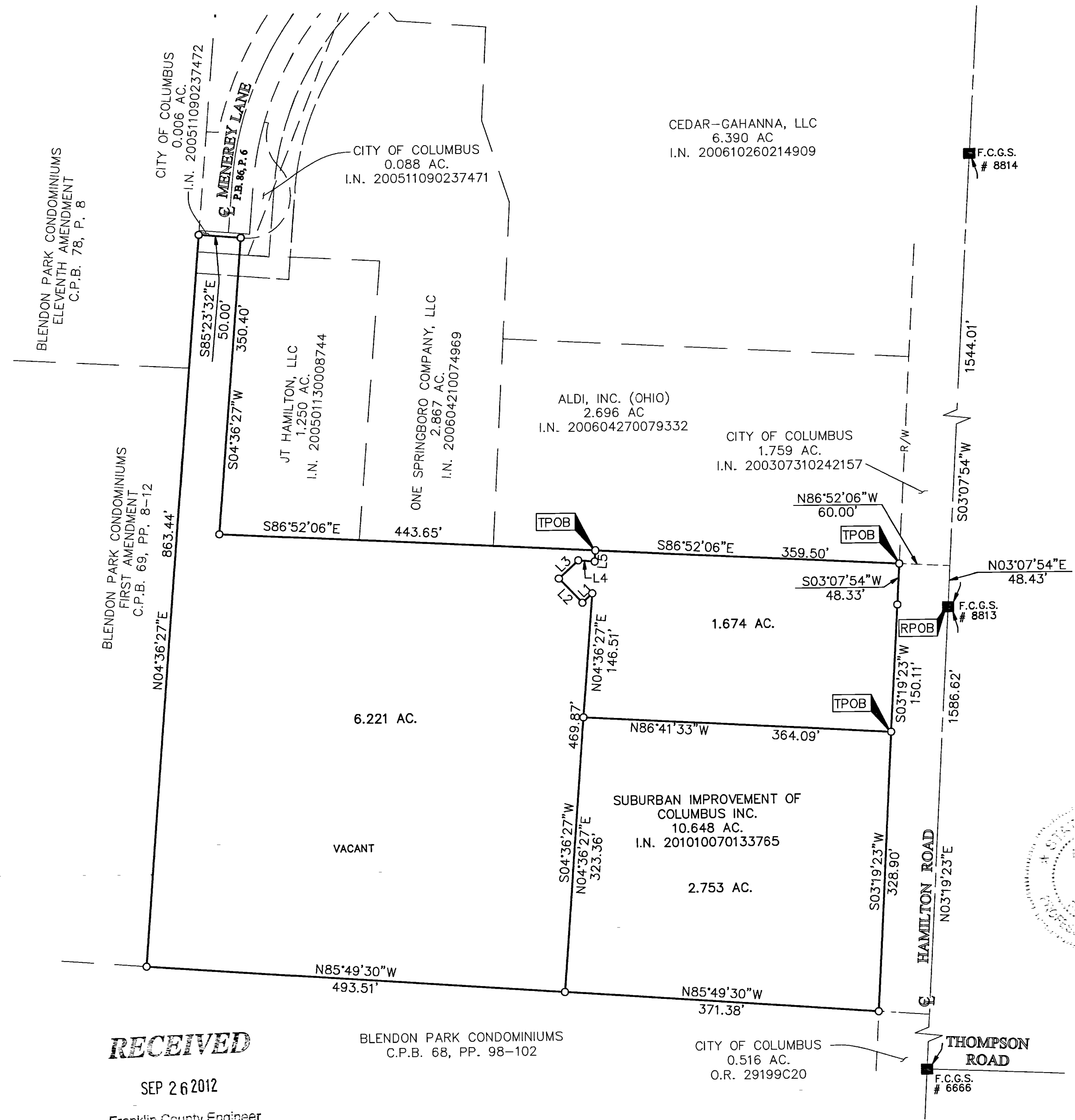


SURVEY OF ACREAGE PARCELS

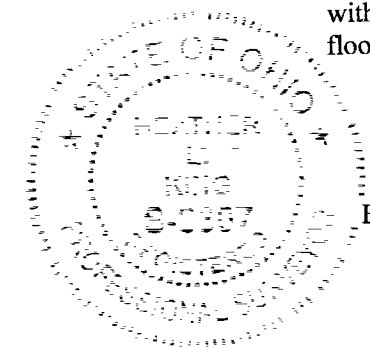
LOT 17, QUARTER TOWNSHIP 4, TOWNSHIP 2, RANGE 17
 UNITED STATES MILITARY LANDS
 CITY OF COLUMBUS, COUNTY OF FRANKLIN, STATE OF OHIO



LINE TABLE		
LINE	BEARING	LENGTH
L1	N46°53'13"E	15.96
L2	S43°17'09"E	40.03
L3	S46°53'18"W	31.28
L4	N85°23'33"W	19.40
L5	S04°36'27"W	12.70

BASIS OF BEARINGS:
 Bearings are based on Ohio State Plane Coordinate System-South Zone as per NAD83 (1986 adjustment). Control for the bearings was from coordinates from Franklin County Geodetic Survey Monument Numbers 8813 and 8814, having a bearing of North 03° 07' 54" East, established by the Franklin County Engineering Department, using Global Positioning System procedures and equipment.

FEMA NOTE:
 According to the Federal Emergency Management Agency's Flood Insurance Map (dated June 17, 2008), the subject tract shown hereon lies within Zone X (areas determined to be outside of the 0.2% annual chance floodplain), Community Panel No. 39049C0203 K.

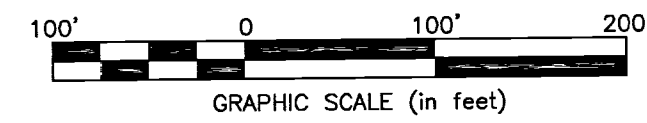


By: *Nathan C. Ringle*
 Professional Surveyor No. 8107

Evans, Mechwart, Hambleton & Tilton, Inc. Engineers • Surveyors • Planners • Scientists 5500 New Albany Road, Columbus, OH 43054 Phone: 614.775.4500 Toll Free: 888.775.3648	Date: September 17, 2012
	Scale: 1" = 100'
	Job No: 2012-1032
	Sheet: 1 of 1

REVISIONS		
MARK	DATE	DESCRIPTION

- = STONE FND.
 - = MON. FND.
 - = I.P. FND.
 - = I.P. SET
 - = MAG. NAIL FND.
 - = MAG. NAIL SET
 - ▲ = R.R. SPK. FND.
 - ▲ = R.R. SPK. SET
 - ◆ = P.K. NAIL FND.
- I.P. Set are 13/16" I.D. iron pipe with cap inscribed EMHT INC



RECEIVED

SEP 26 2012
 Franklin County Engineer
 Dean C Ringle, P.E., P.S.

I:\2012\1032\20121032\DWG\20121032BNDY.dwg plotted by BAWTER, THERESA on 9/17/2012 2:13:26 PM last saved by BAWTER on 9/17/2012 2:13:19 PM