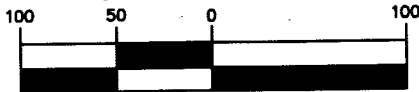


GRAPHIC SCALE



LINE TABLE

LINE	BEARING	DISTANCE
L1	S 89°16'34" E	30.11'
L2	S 57°32'05" E	24.72'

EXHIBIT OF A 0.911 ACRE SPLIT

Situated in the State of Ohio, County of Franklin,
City of Dublin, being in Virginia Military Survey 2999,
being a part of a 5.099 acre tract conveyed to
CAR MAG PARK L.L.C.,
Instrument Number 200906170087819.

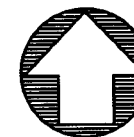
**SANDS
DECKER
CPS**

ENGINEERS • SURVEYORS

11 WEST MAIN ST
LOGAN, OH 43138
740-385-2140

1495 OLD HENDERSON RD
COLUMBUS, OH 43220
614-459-6992
FAX: 614-459-6987
TOLL FREE: 866-277-0600

507 MAIN STREET, SUITE 203
ZANESVILLE, OH 43701
740-450-1640



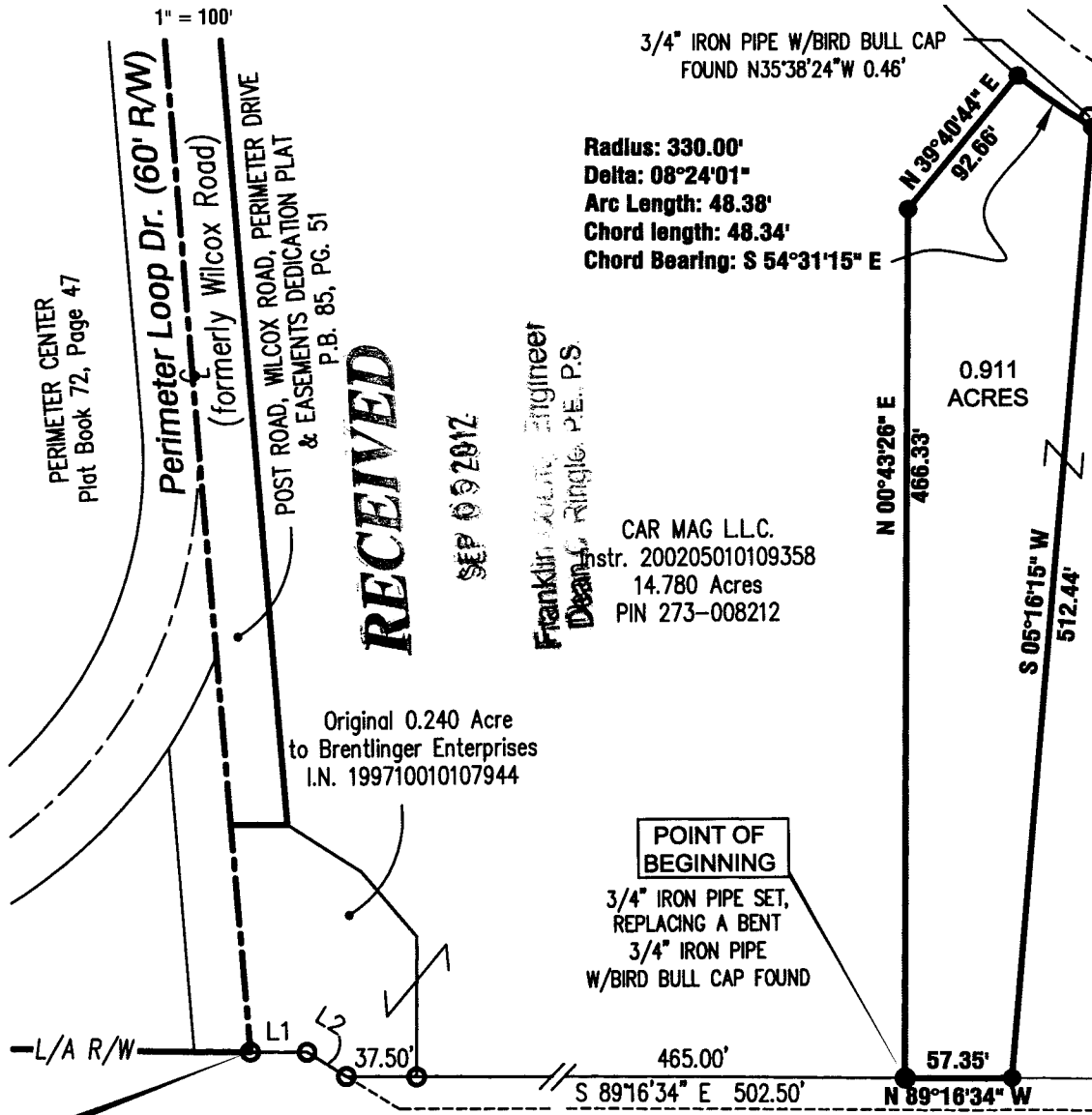
NORTH

- IRON PIPE SET
- 3/4" IRON PIPE FND

Based on an actual survey performed during July 2011 and April 2012 by Sands Decker CPS LLC and records on file at the Franklin County Recorder's Office.

All iron pipes set are 3/4" inside diameter iron pipe being 30" in length with a 1" yellow plastic cap inscribed "Sands Decker."

Bearings are based on the north Limited Access right-of-way line of US 33 and State Route 161 bearing North 89°16'34" West as referenced on a survey by C.F. Bird & R.J. Bull, Inc. dated May 19, 2009 and shown in Instrument Number 200906170087819.



3/4" IRON PIPE W/BIRD BULL CAP
FOUND N35°38'24"W 0.46'

Radius: 330.00'
Delta: 08°24'01"
Arc Length: 48.38'
Chord length: 48.34'
Chord Bearing: S 54°31'15" E

Radius: 330.00'
Delta: 30°33'18"
Arc Length: 175.98'
Chord length: 173.91'
Chord Bearing: S 73°59'55" E

CAR MAG L.L.C.
Instr. 200205010109358
14.780 Acres
PIN 273-008212

CAR MAG PARK L.L.C.
Instr. 200906170087819
5.099 Acres TOTAL
PID 273-012294-80

Franklin County Engineer
Dean S. Ringle, P.E., P.S.

RECEIVED

SEP 09 2012

**US 33 & STATE ROUTE 161
LIMITED ACCESS R/W VARIES**
See Sht 12 of 14, ODOT R/W Plan FRA-33-0.34

STATE of OHIO
Deed Vol. 2812, Pg. 483
0.561 Acre

Anthony R. Sheck
ANTHONY R. SHECK PS 6954 DATE 9-25-12