



Evans, Mechwart, Hambleton & Tilton, Inc.
 Engineers • Surveyors • Planners • Scientists
 5500 New Albany Road, Columbus, OH 43054
 Phone: 614.775.4500 Toll Free: 888.775.3648

emht.com

SURVEY OF ACREAGE PARCEL

QUARTER TOWNSHIP 3, TOWNSHIP 2, RANGE 16

UNITED STATES MILITARY LANDS

CITY OF COLUMBUS, COUNTY OF FRANKLIN, STATE OF OHIO

Date: August 13, 2012

Scale: 1" = 100'

Job No. 2012-1300

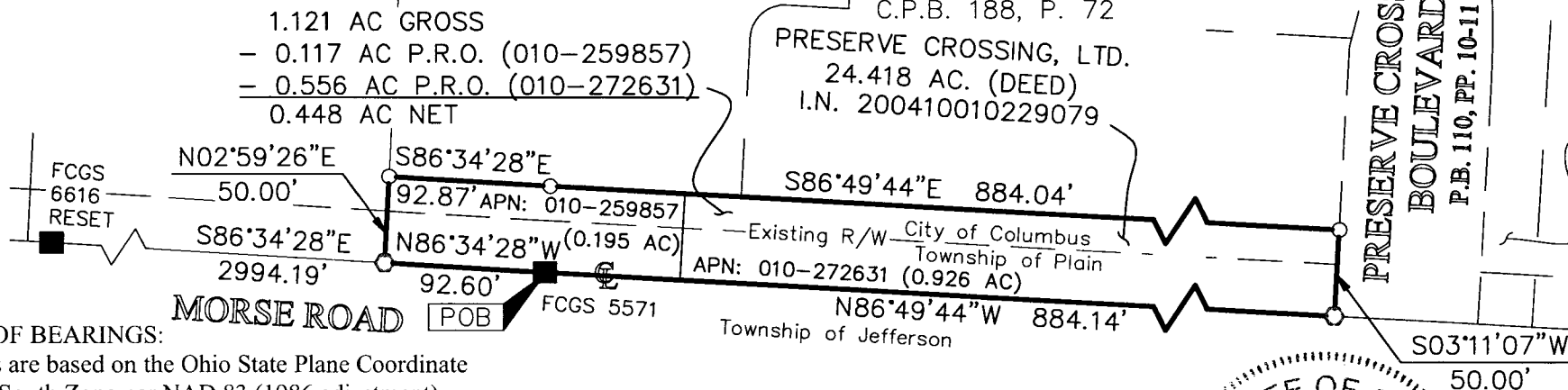
VILLAGES AT PRESERVE
 CROSSING IV, LTD.
 9.784 AC.
 I.N. 201112300171595

THE PRESERVE CROSSING
 CONDOMINIUM SIXTH
 AMENDMENT
 C.P.B. 173, P. 99

THE PRESERVE
 CROSSING
 CONDOMINIUM
 TENTH AMENDMENT
 C.P.B. 188, P. 72

WARREN ROBERTS &
 CAROLYN M. ROBERTS
 14.105 ACRES
 O.R. 7620D04
 O.R. 11254A18

VILLAGES AT PRESERVE
 CROSSING LTD
 26.445 AC (DEED)
 I.N. 200409280225616



BASIS OF BEARINGS:

Bearings are based on the Ohio State Plane Coordinate System, South Zone per NAD 83 (1986 adjustment). Control for bearings was from coordinates of monuments FCGS 6666 and 6667, having a bearing of South 86° 56' 02" East for the centerline of Thompson Road, established by the Franklin County Engineering Department using Global Positioning System procedures and equipment.

■ = MON. FND.

○ = I.P. SET

○ = MAG. NAIL SET

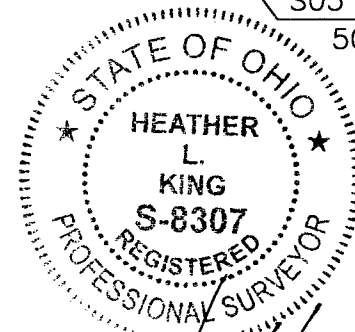
I.P. Set are 13/16" I.D. iron pipe with cap inscribed EMHT INC



GRAPHIC SCALE (in feet)

SURVEY NOTE:

This survey was prepared using documents of record, prior plats of survey, and observed evidence located by an actual field survey.



RECEIVED

AUG 17 2012

Franklin County Engineer
 Dean C. Ringle, P.E., P.S.

By Heather L. King
 Heather L. King
 Professional Surveyor No. 8307

8/16/12
 Date

J-2-B